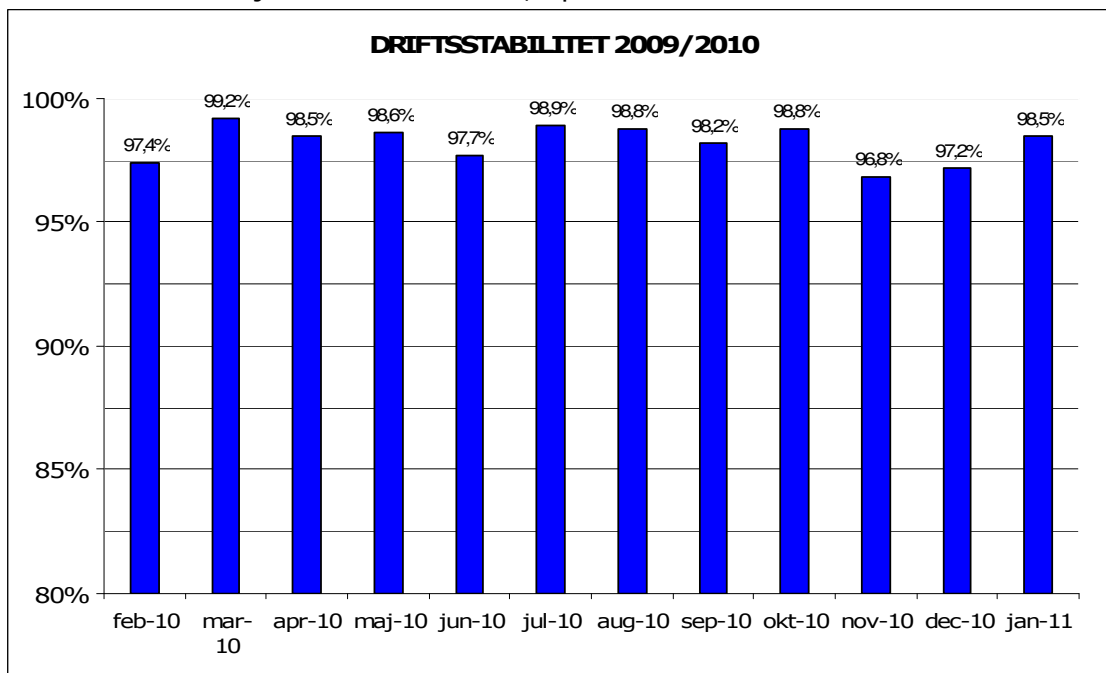


Februar, 2011

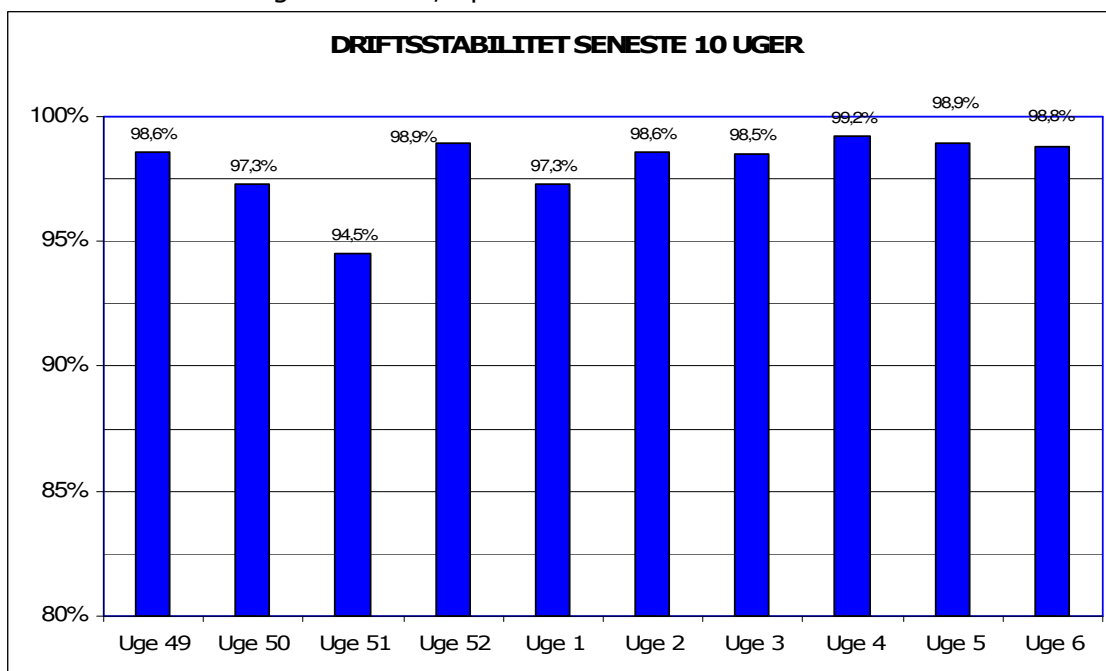
Metroens driftsstabilitet og passagertal uge 6, 2011

Driftsstabilitet

Driftsstabiliteten i januar 2011 var 98,5 pct.

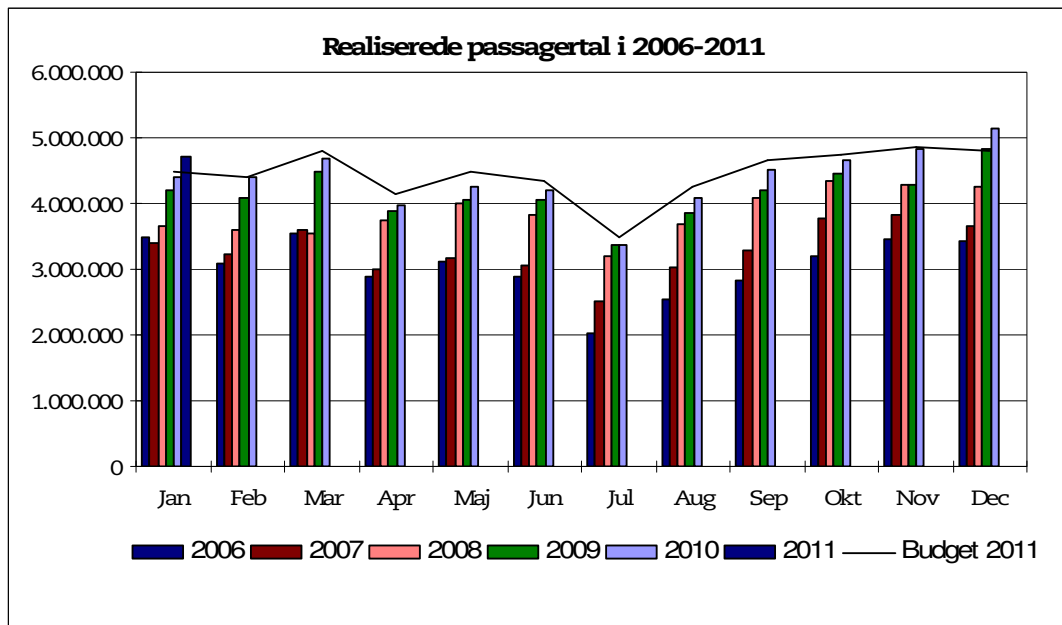


Driftsstabiliteten i uge 6 var 98,8 pct.

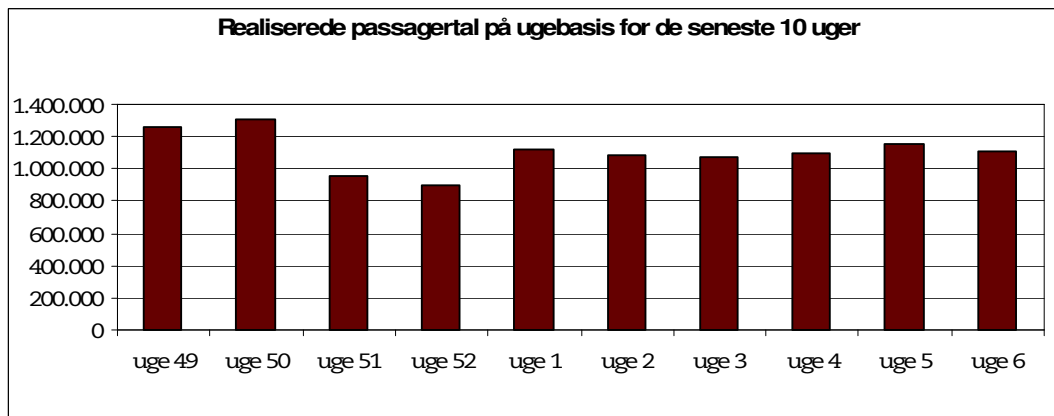


Passagertal

Passagertallet for januar 2011 var ca. 4,7 mio.



Passagertallet i uge 6 var ca. 1.106.531



Opgørelser i dette notat bygger på foreløbige tal, hvorfor der tages forbehold for eventuelle senere justeringer.