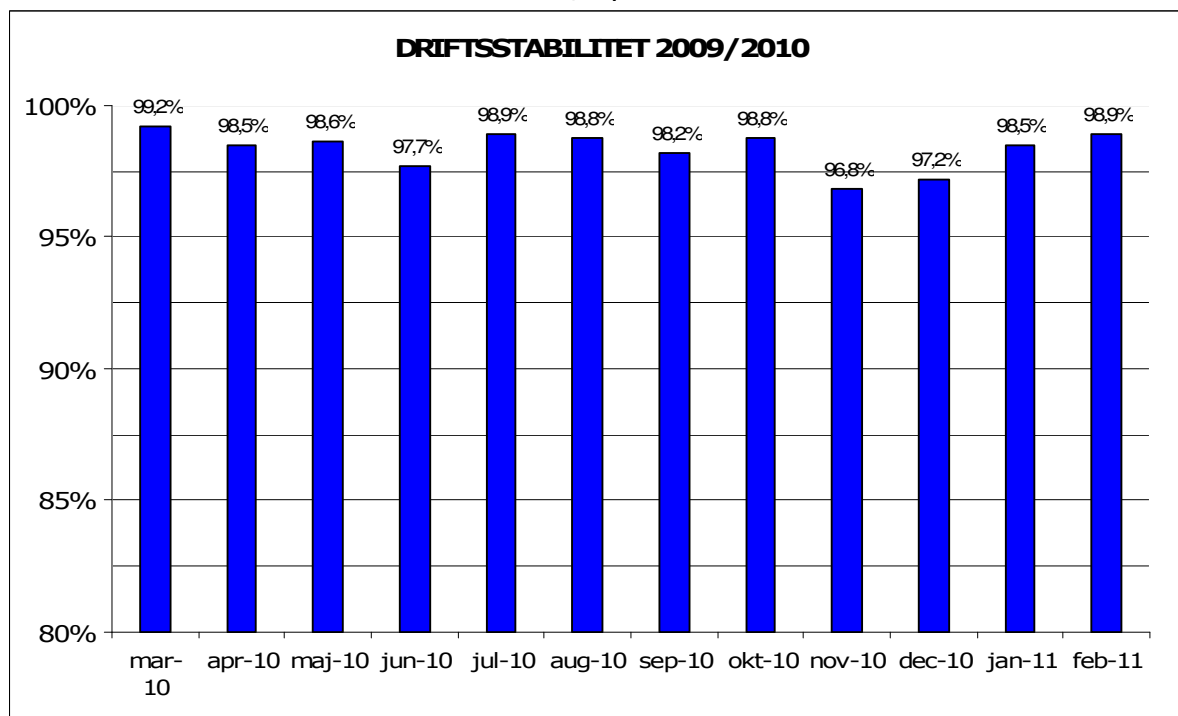


April, 2011

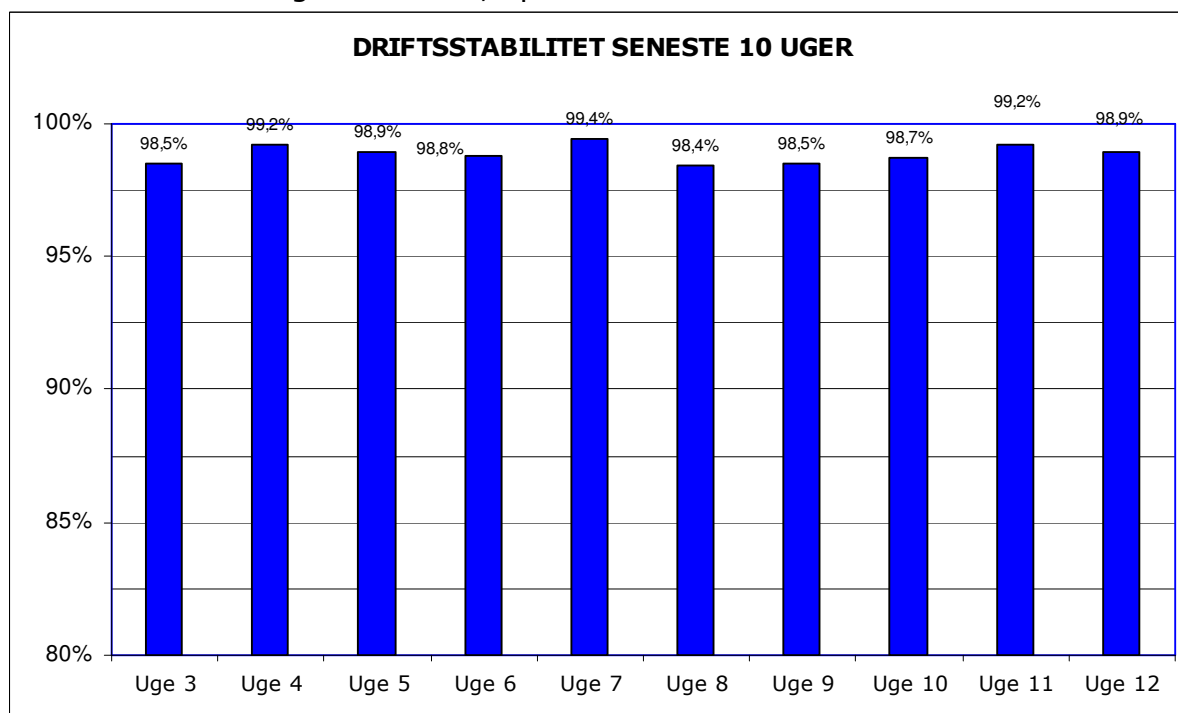
Metroens driftsstabilitet og passagertal uge 12, 2011

Driftsstabilitet

Driftsstabiliteten i februar 2011 var 98,9 pct.

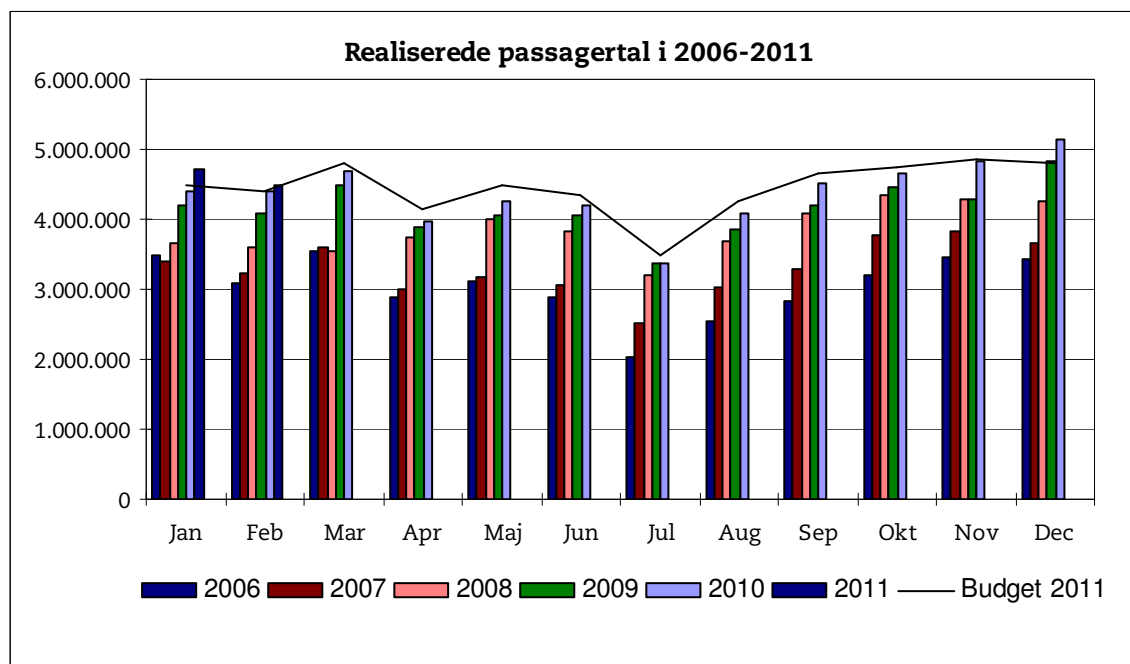


Driftsstabiliteten i uge 12 var 98,9 pct.

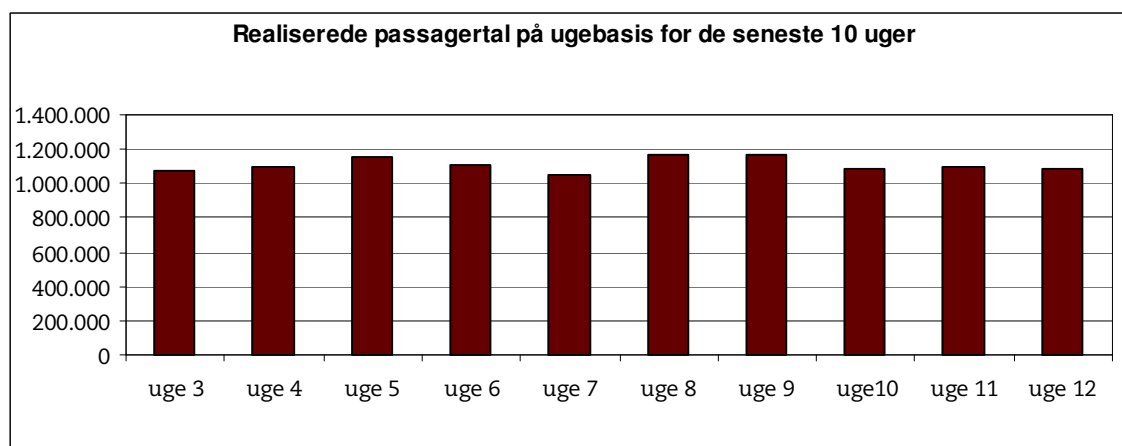


Passagertal

Passagertallet for februar 2011 var ca. 4,5 mio.



Passagertallet i uge 12 var ca. 1.088.660



Opgørelser i dette notat bygger på foreløbige tal, hvorfor der tages forbehold for eventuelle senere justeringer.