

VISUALISERING FRA HOLMBLADSGADE



Eksisterende



Fremtidig



Eksisterende



Fremtidig



HOLMBLADSGADE

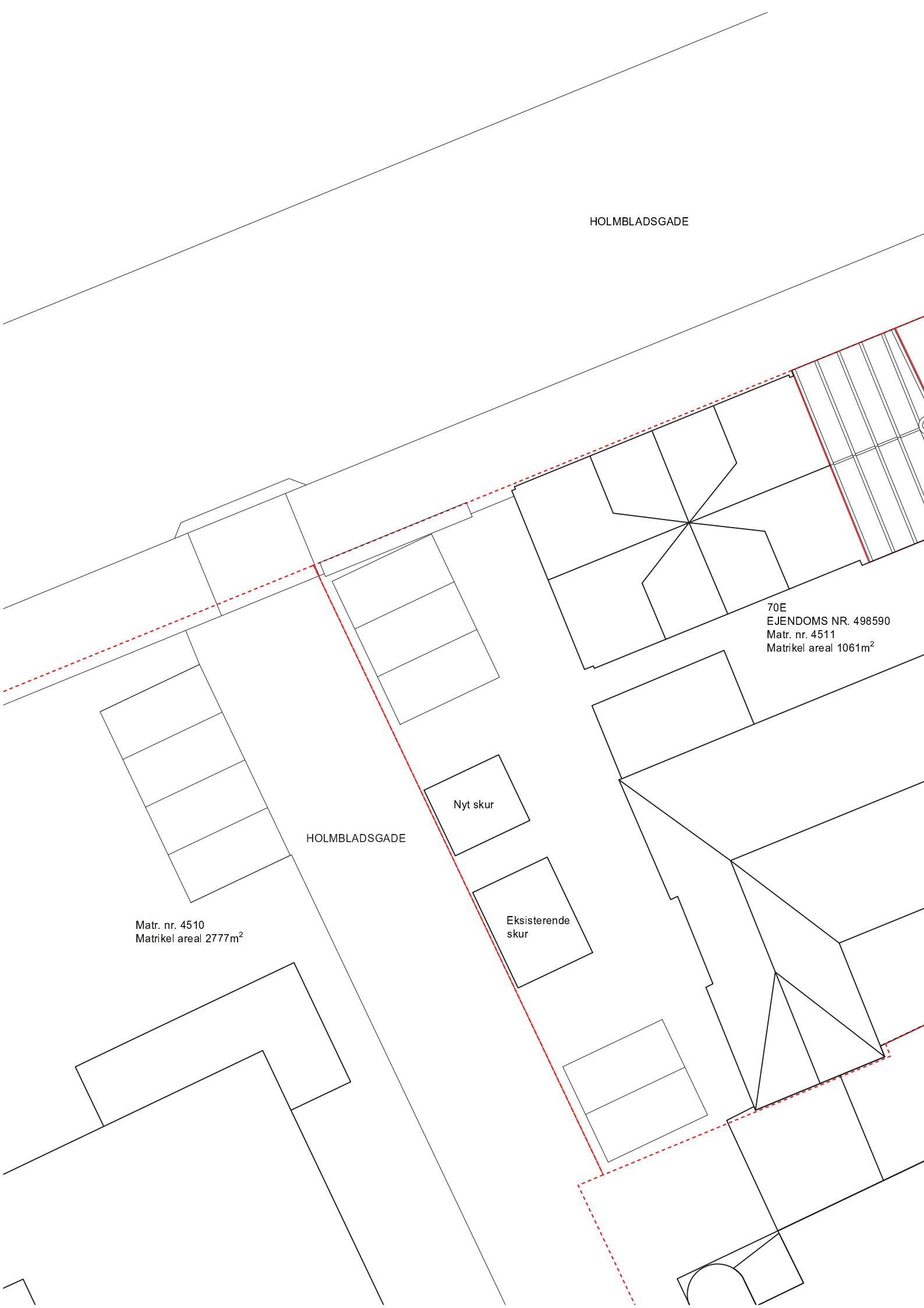
70E
EJENDOMS NR. 498590
Matr. nr. 4511
Matrikel areal 1061m²

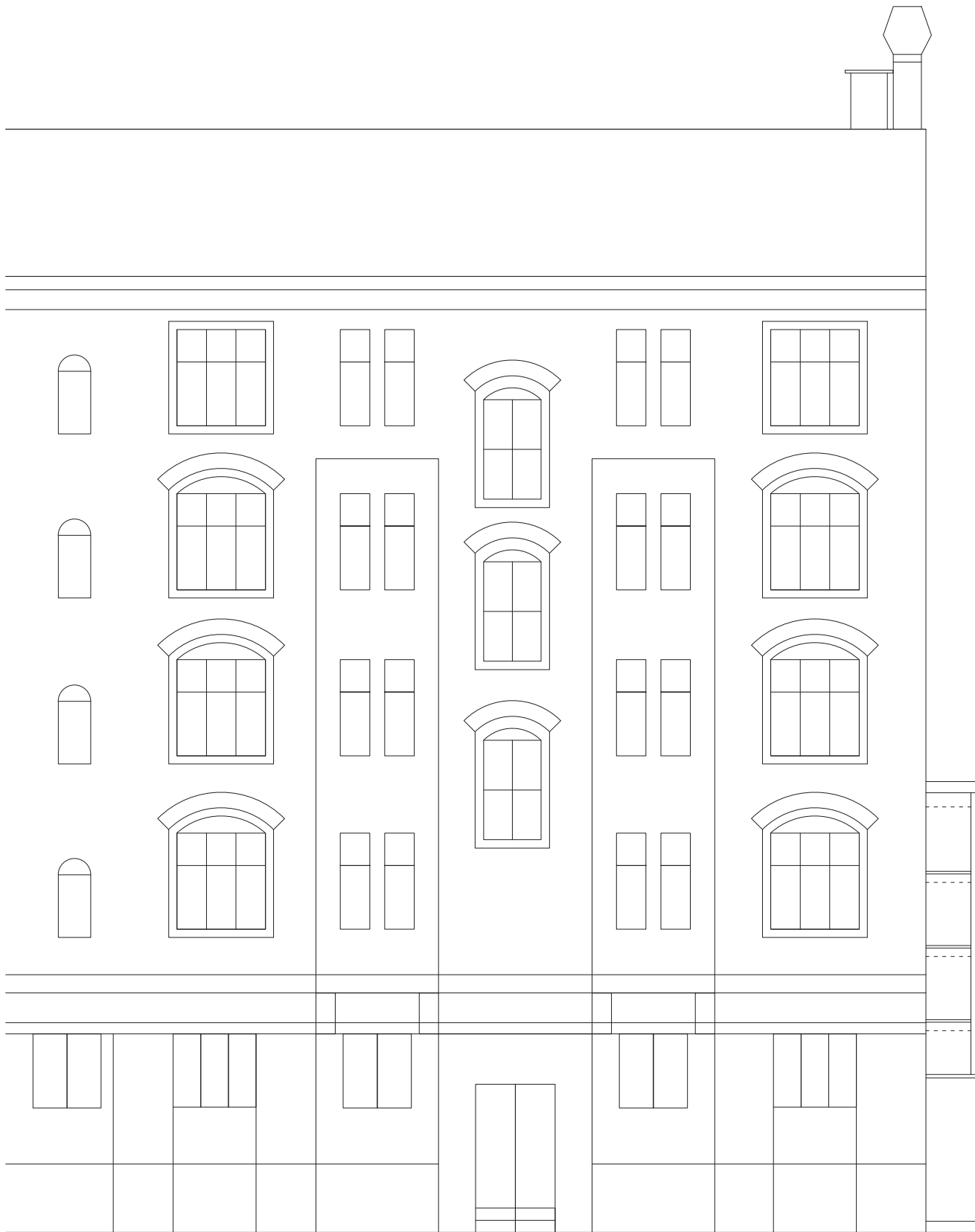
Nyt skur

Eksisterende
skur

HOLMBLADSGADE

Matr. nr. 4510
Matrikel areal 2777m²





Ikke opmålt facade



Sad



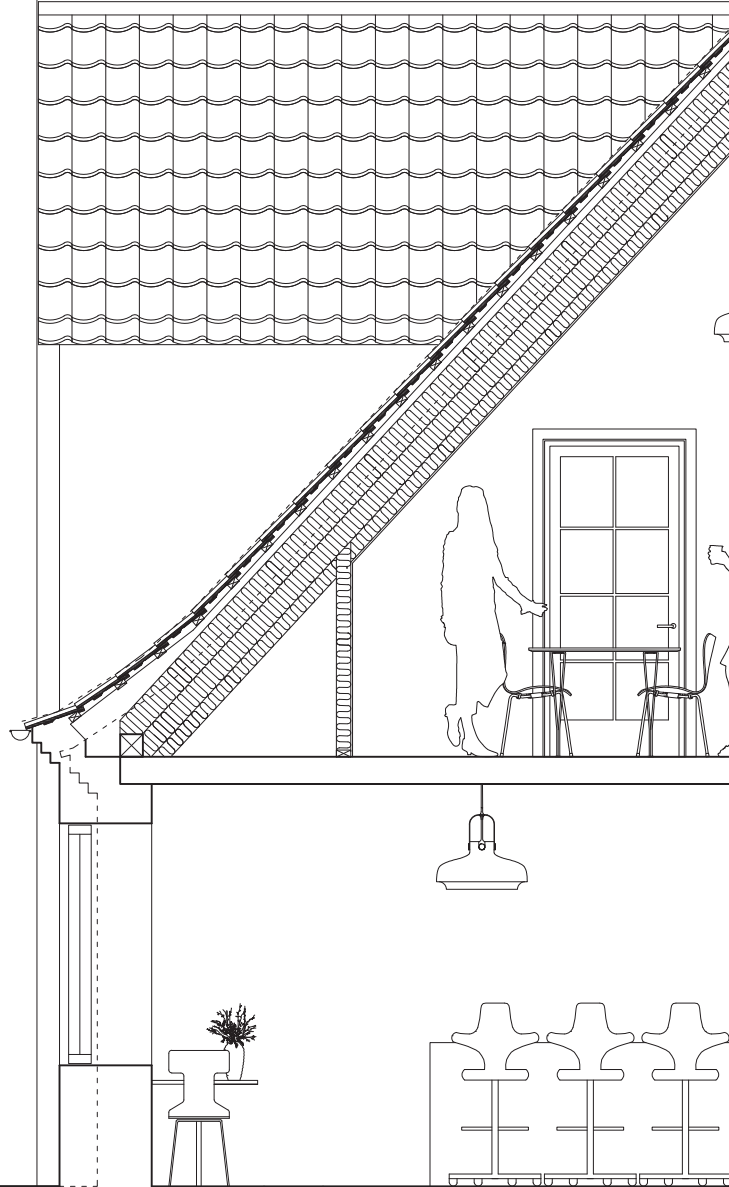
VILLA

MENU

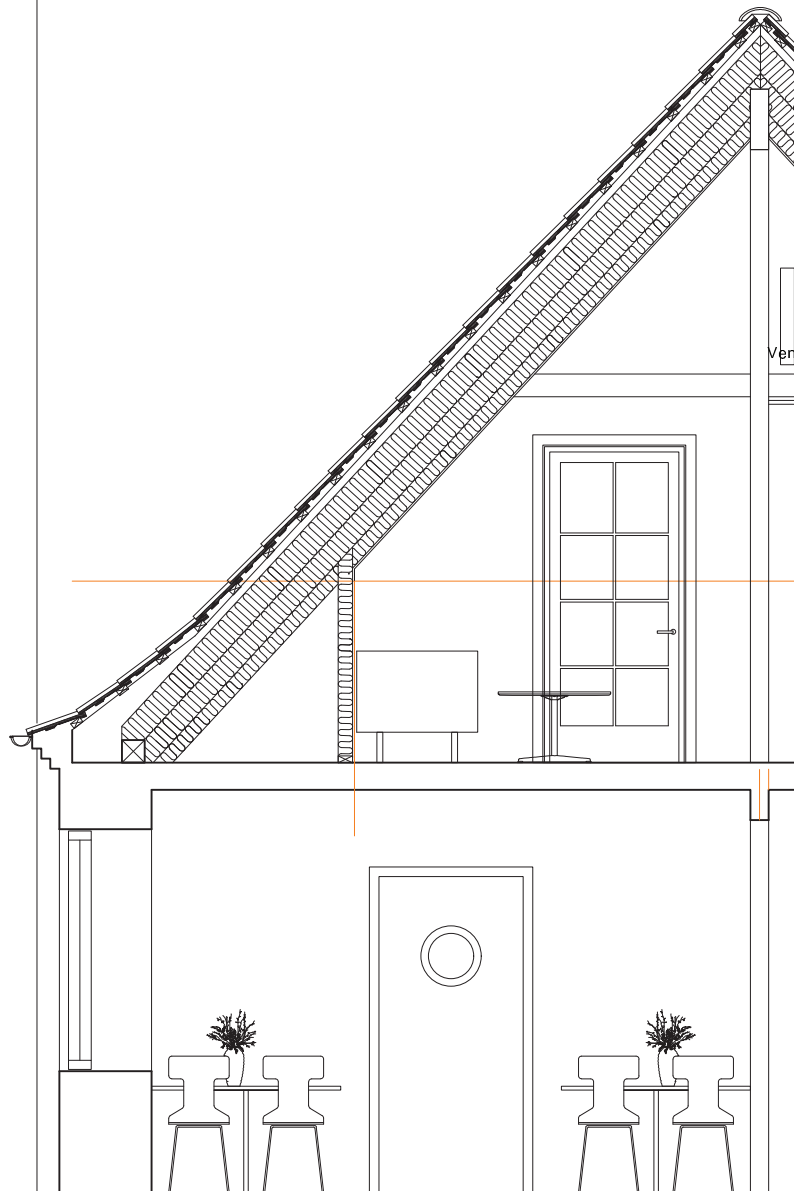
Sad

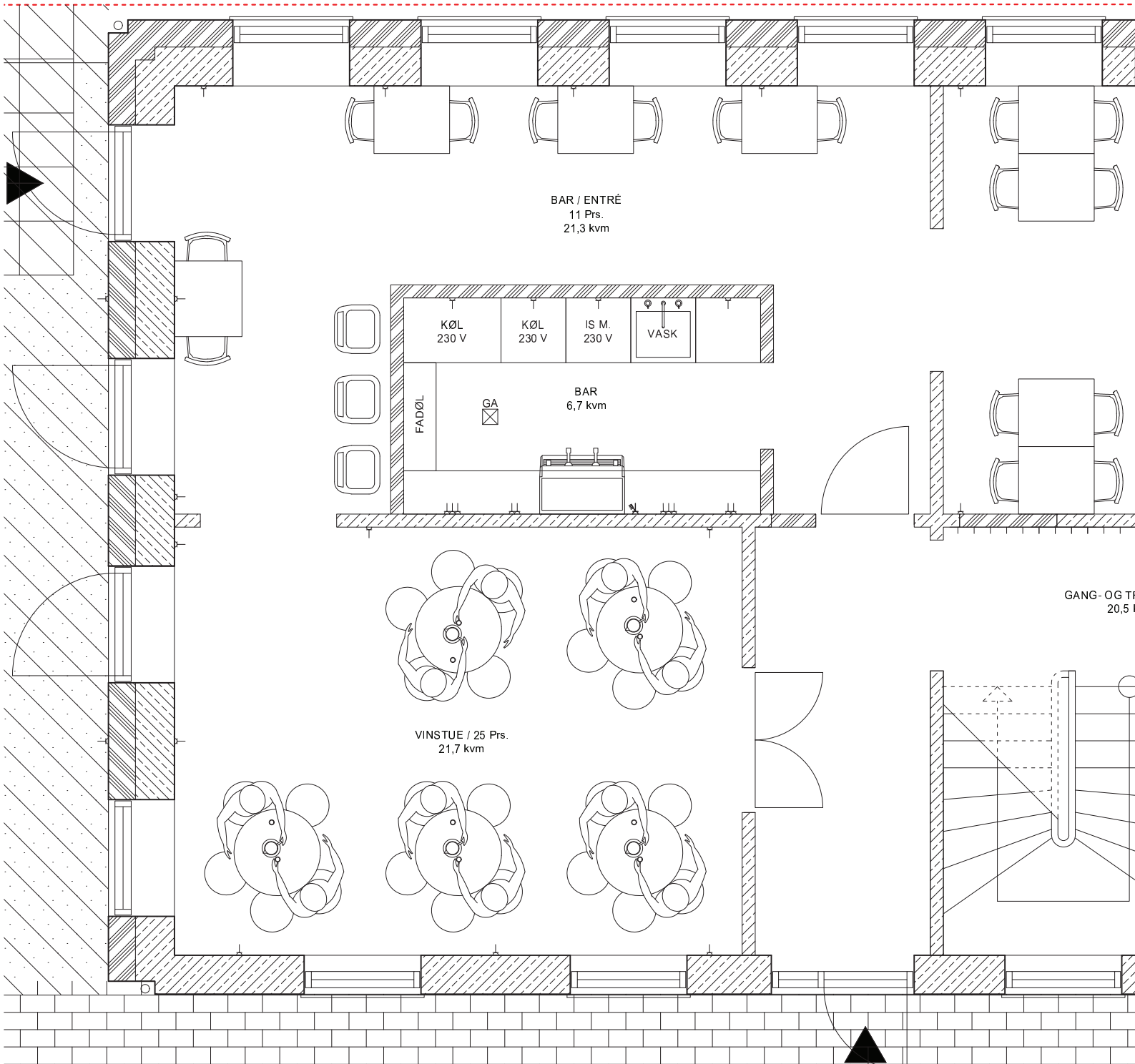
Ny tag

- Teglst
- 38x73
- 90x390
- 320 m
- Damps
- 45x95
- 12,5 m

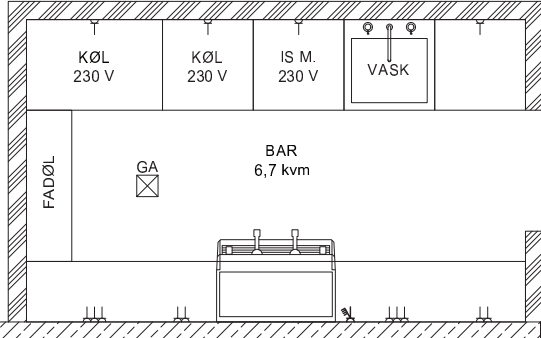


Sade





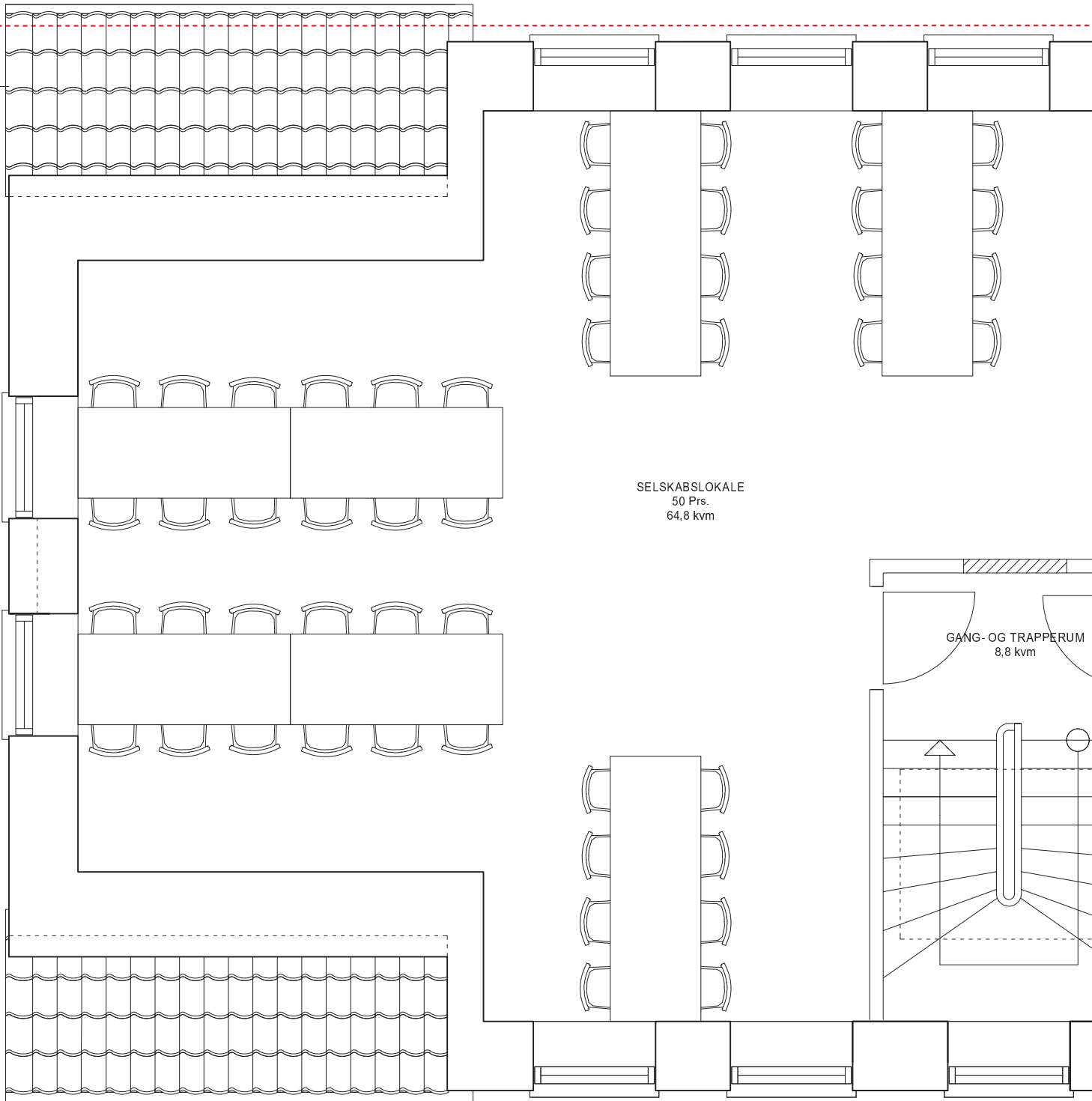
BAR / ENTRÉ
11 Prs.
21,3 kvm



VINSTUE / 25 Prs.
21,7 kvm

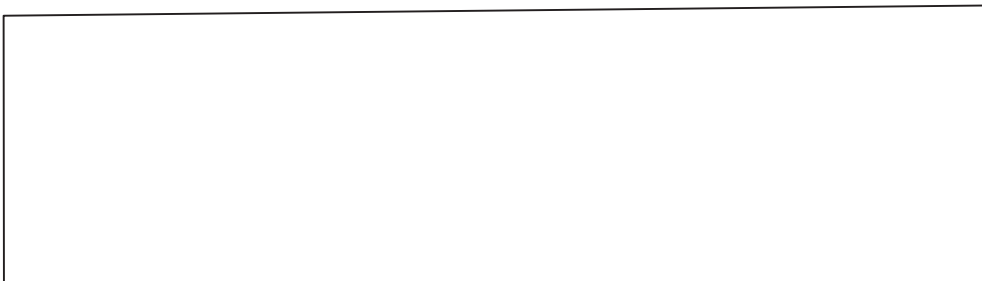
GANG- OG TR
20,5

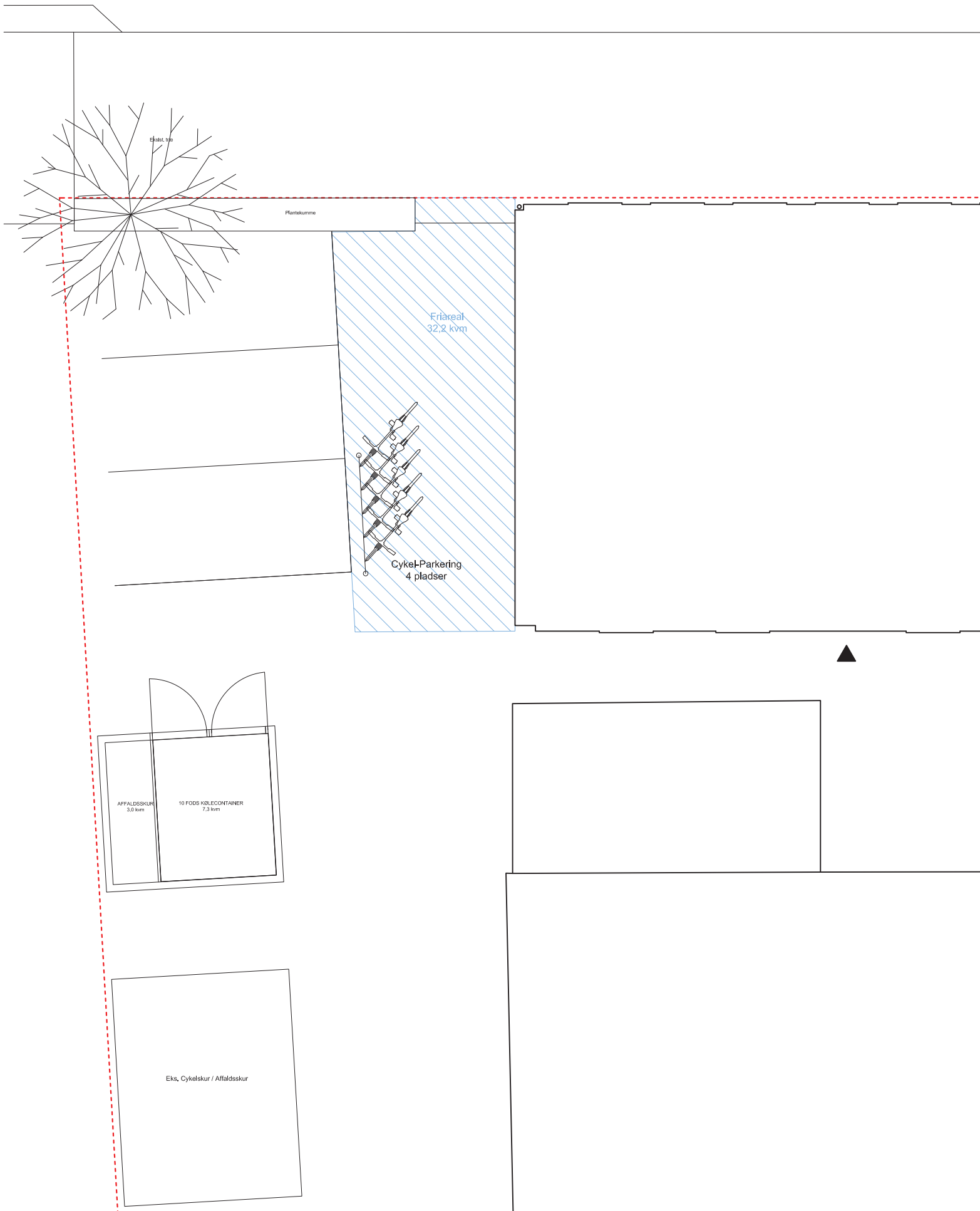
Eksisterede teglstensvæg	
Ytong facadeisolering	
Ny Borebeton	
Ytong Energi+ blokke	



SELSKABSLOKALE
50 Prs.
64,8 kvm

GANG- OG TRAPPERUM
8,8 kvm





Eksl. 1/10

Plantekumme

Frifl. 32,2 kvm

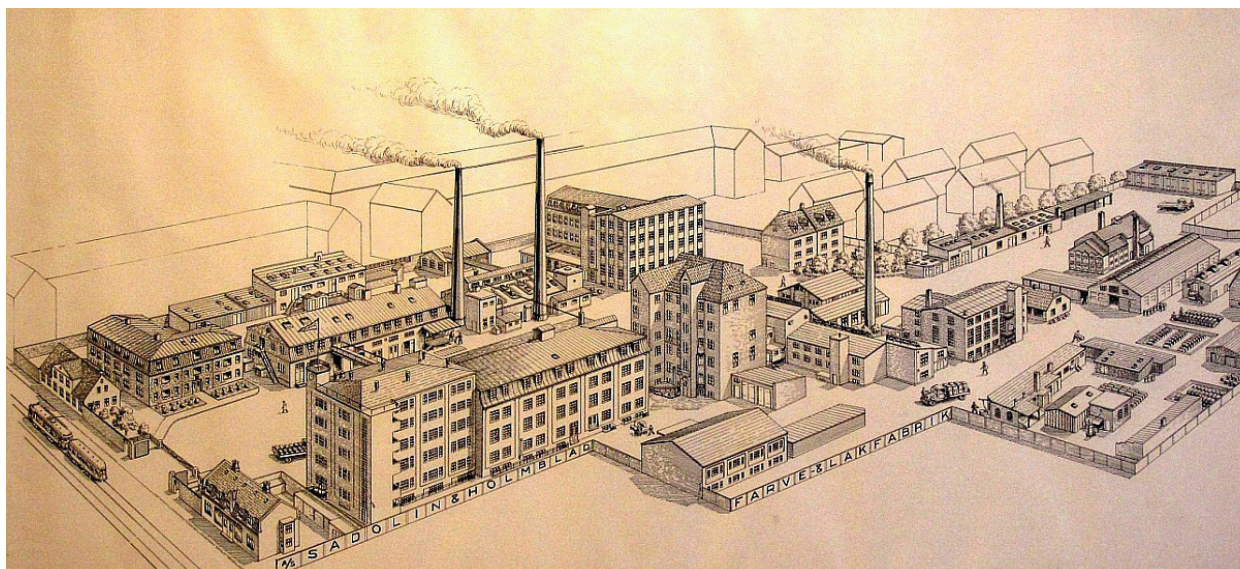
Cykel-Parkering
4 pladser

AFFALDESKUR
3,0 kvm

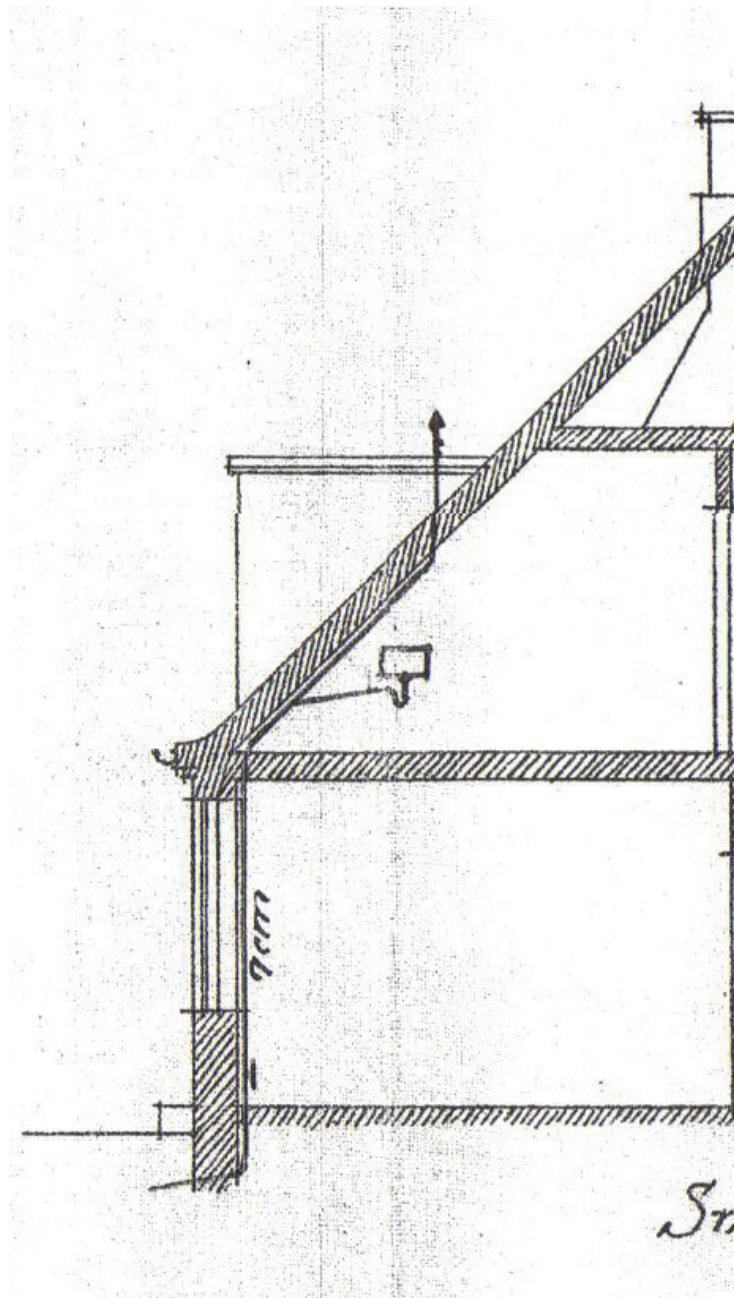
10 FODS KØLECONTAINER
7,3 kvm

Eks. Cykelskur / Affaldsskur

HISTORISKE BILLEDER AF EJENDOMMEN



SNIT - OPRINDELIG TAGFORM MED TASKEKVIST MOD BAGGÅRD



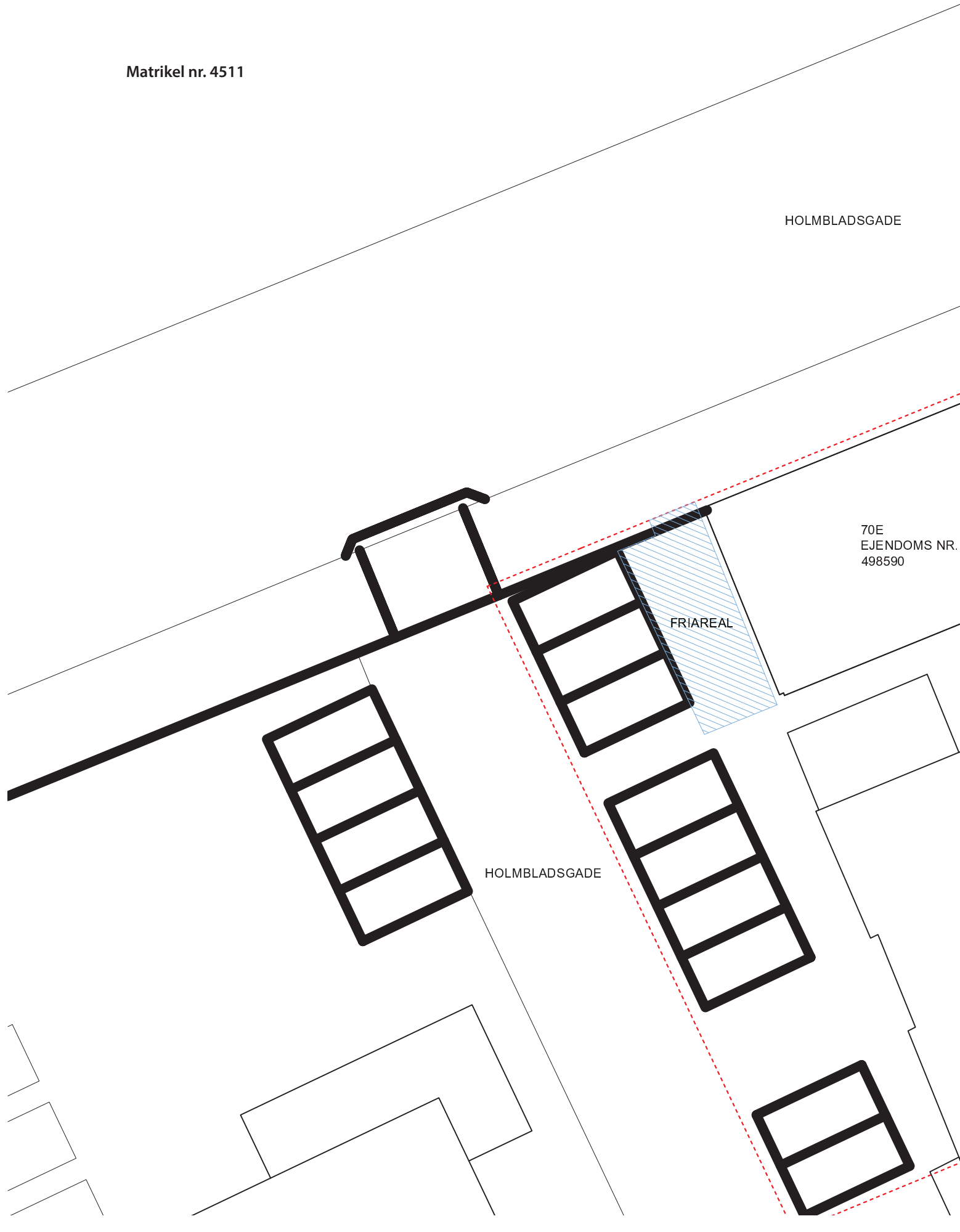
Matrikel nr. 4511

HOLMBLADSGADE

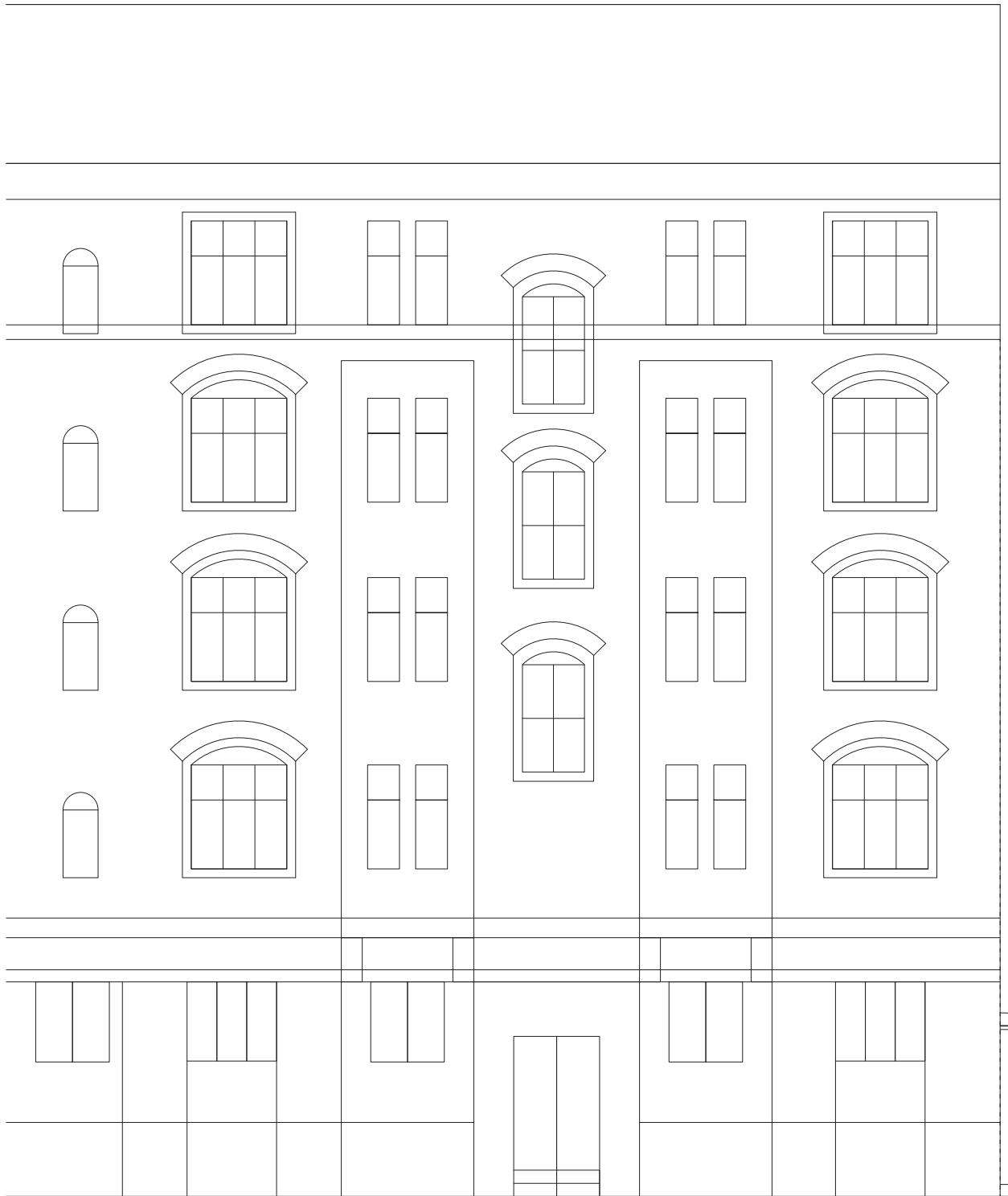
70E
EJENDOMS NR.
498590

FRIAREAL

HOLMBLADSGADE



EKSISTERENDE FACADE MOD NORD - 1:100

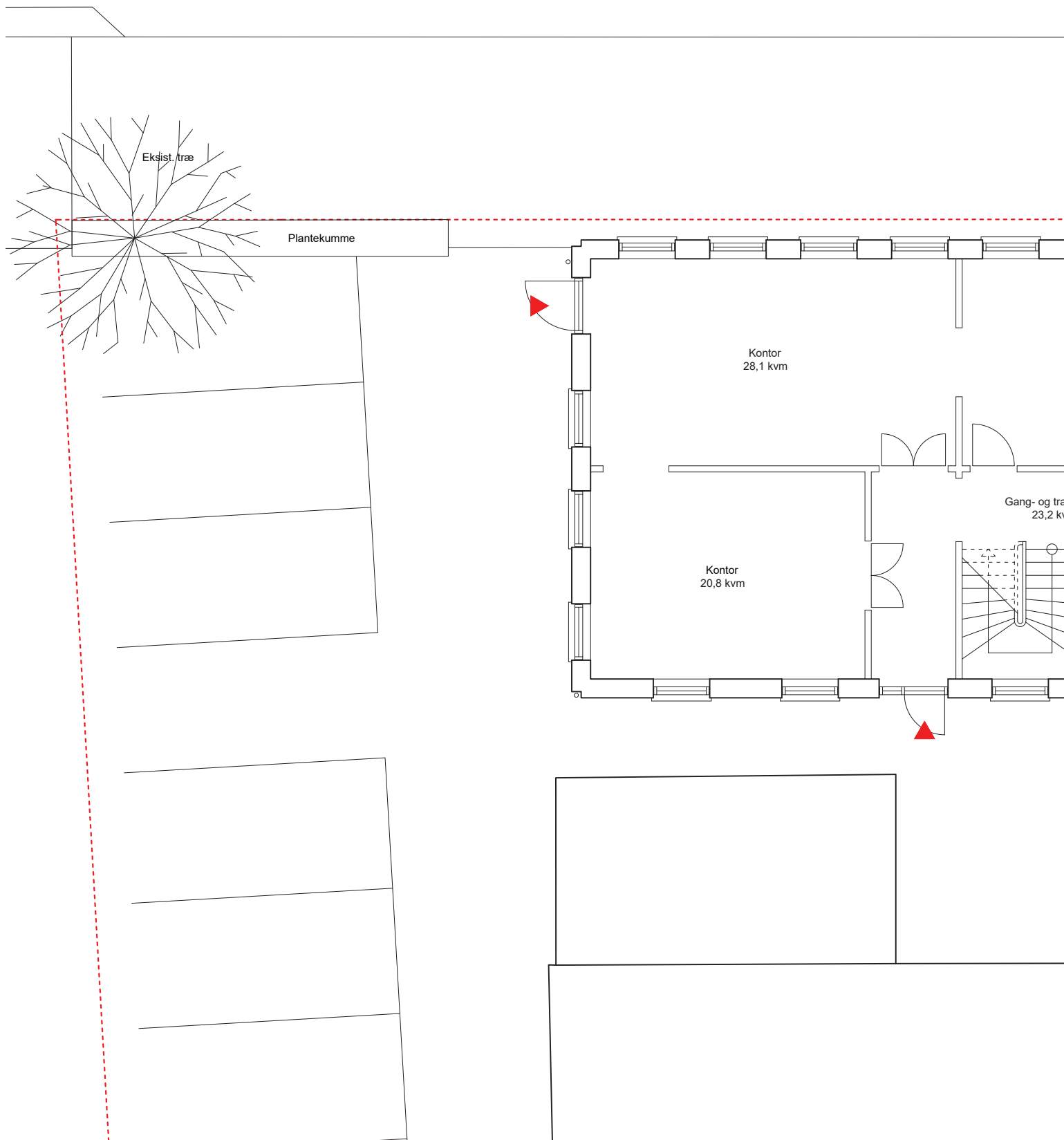


Ikke opmålt facade





EKSISTERENDE STUEPLAN - 1:100



EKSISTERENDE 1.SAL - 1:100

