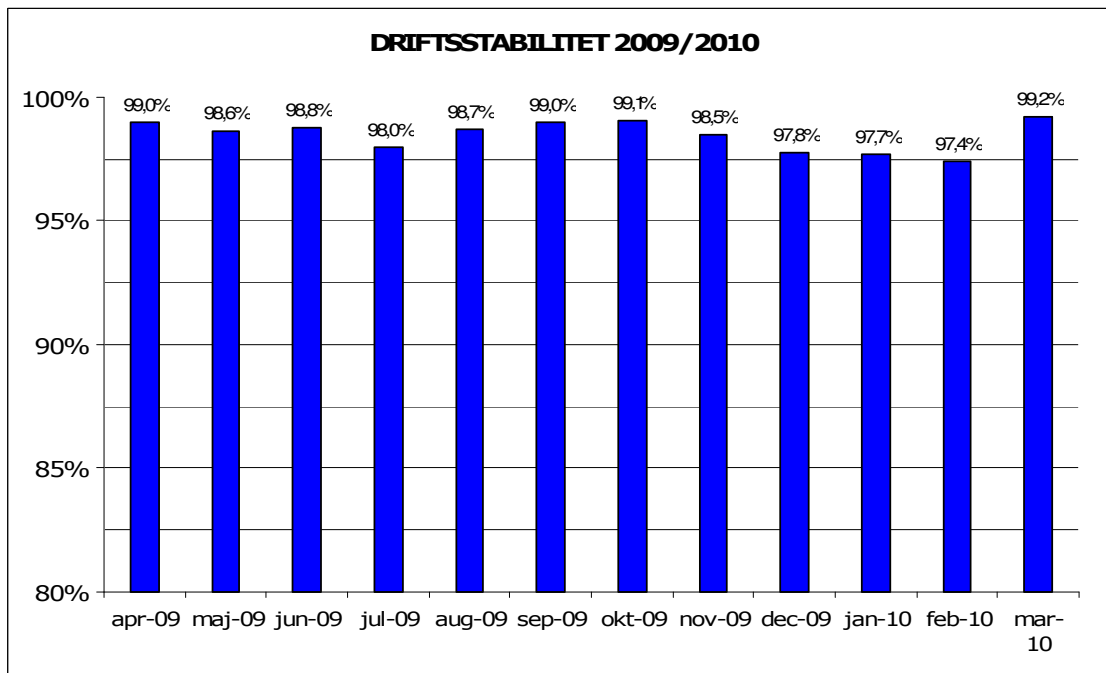


April, 2010

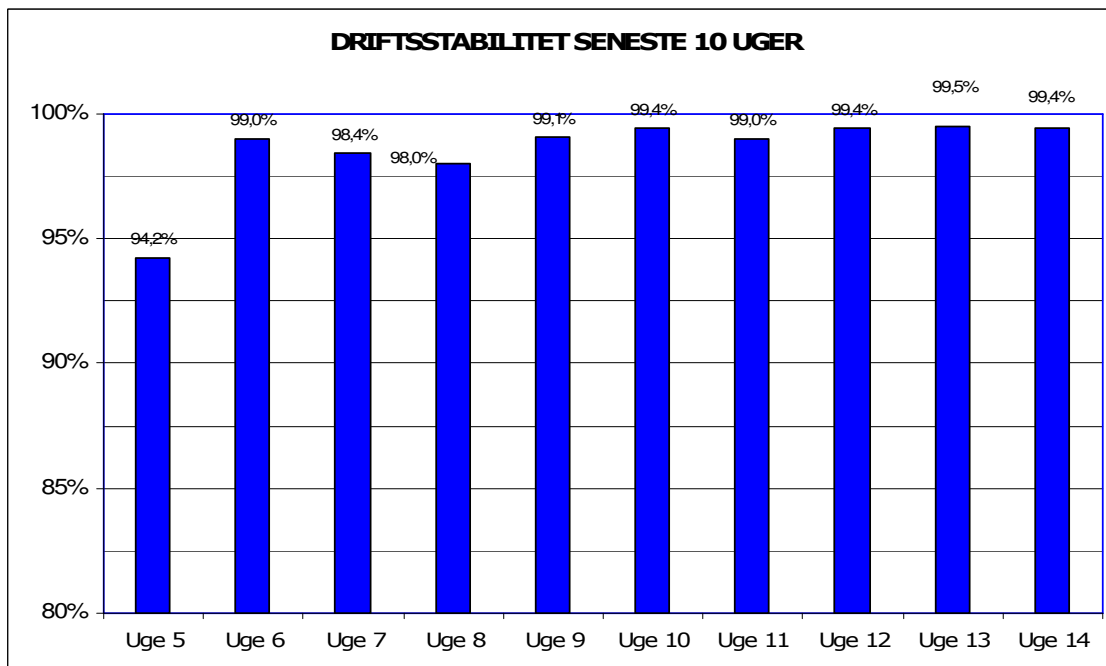
## Metroens driftsstabilitet og passagertal uge 14, 2010

### Driftsstabilitet

Driftsstabiliteten i marts var 99,2 pct.

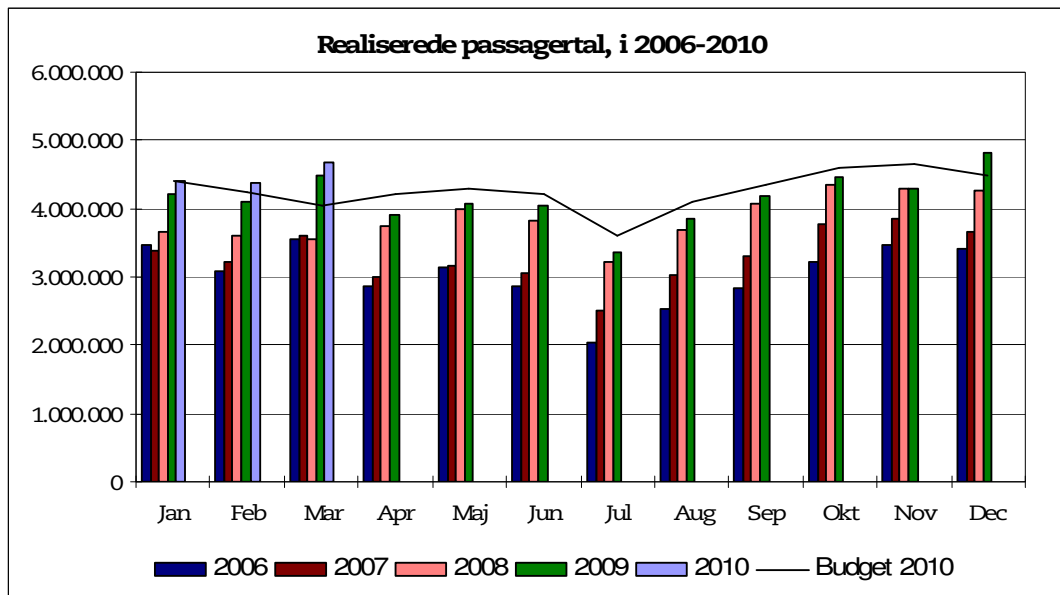


Driftsstabiliteten i uge 14 var pct. 99,4

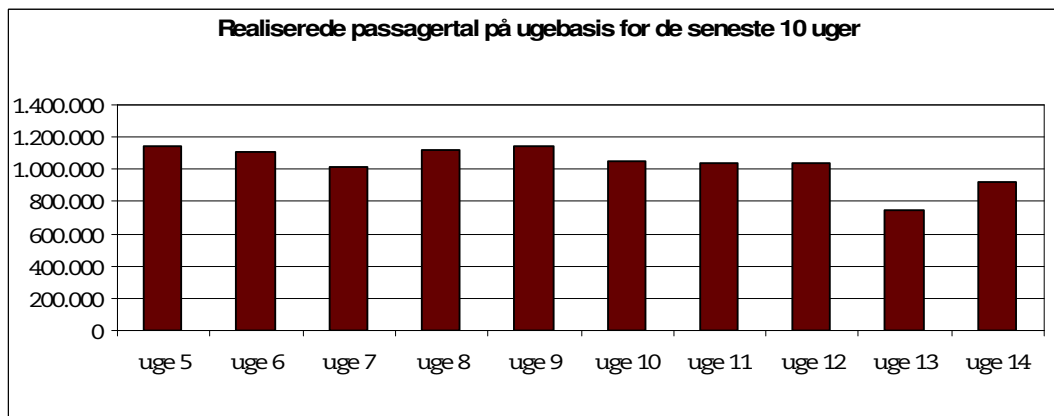


## Passagertal

Passagertallet for marts 2010 var ca. 4,7 mio.



Passagertallet i uge 14 var 922.385



Opgørelser i dette notat bygger på foreløbige tal, hvorfor der tages forbehold for eventuelle senere justeringer.