



Nørrebro Park Skole

PRÆSENTATION

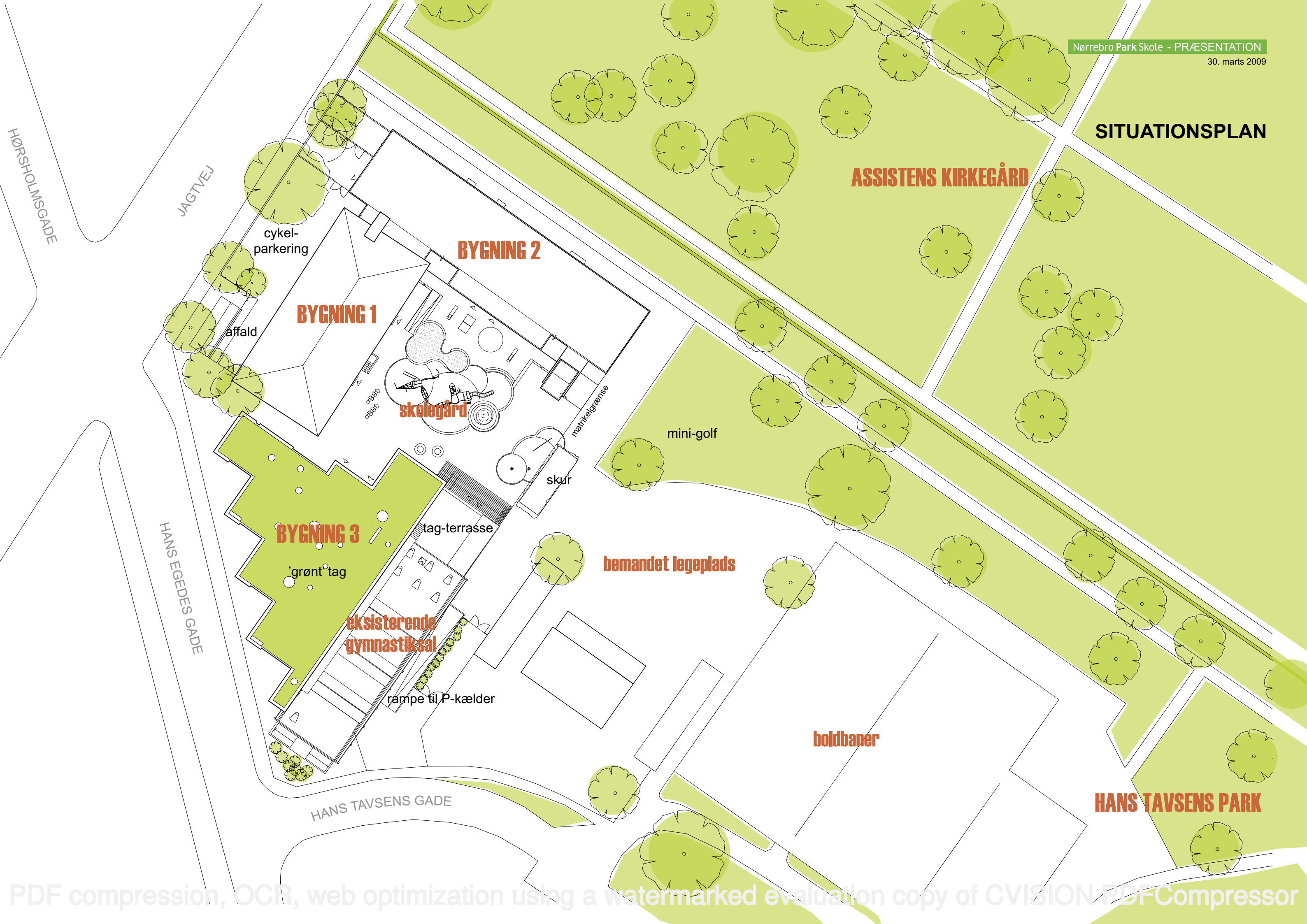
30. marts 2009



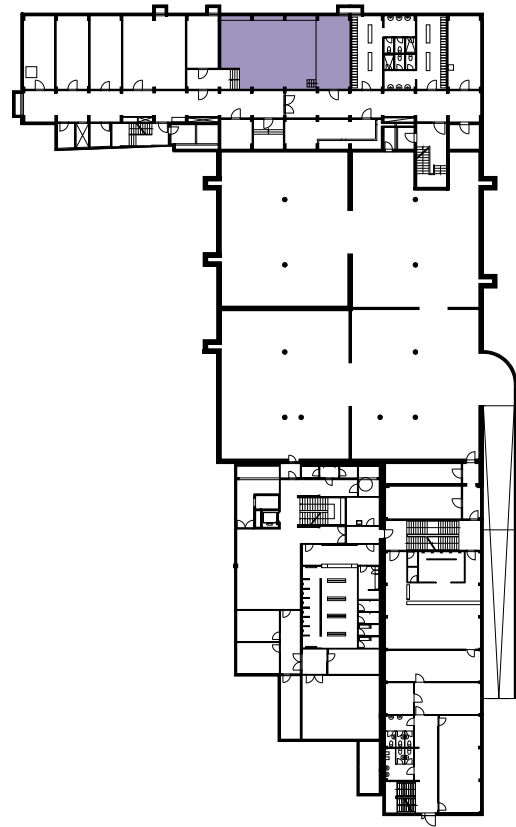
PLACERING I BYEN NØRREBRO



SITUATIONSPLAN



kælderplan



stueplan



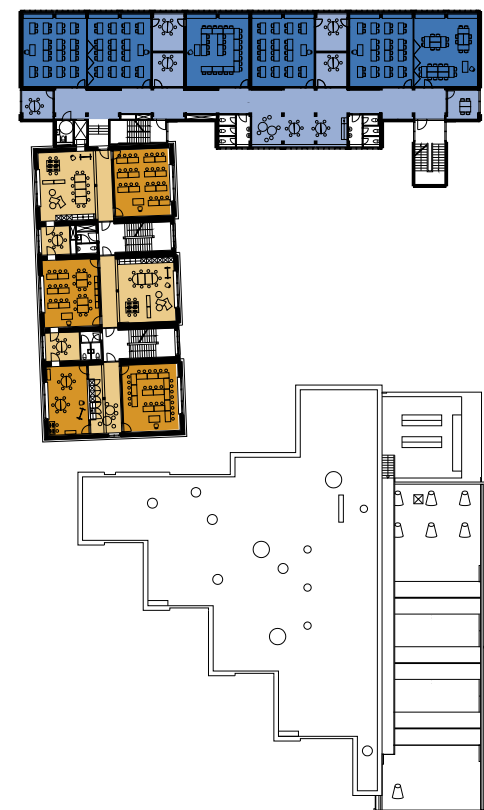
1. sal



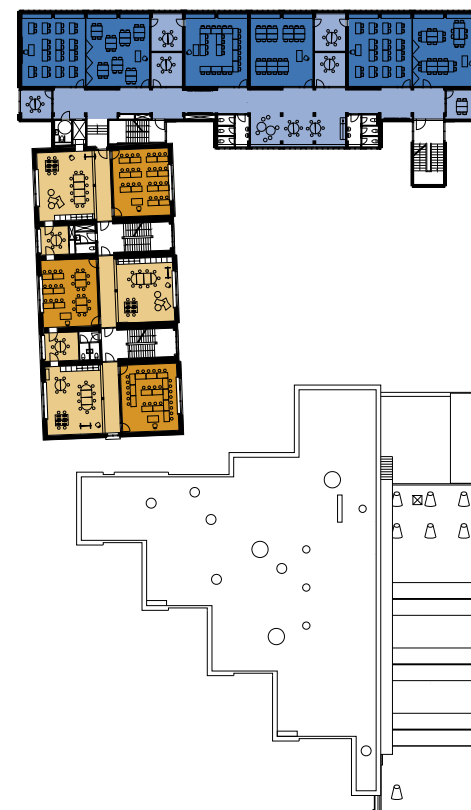
2. sal



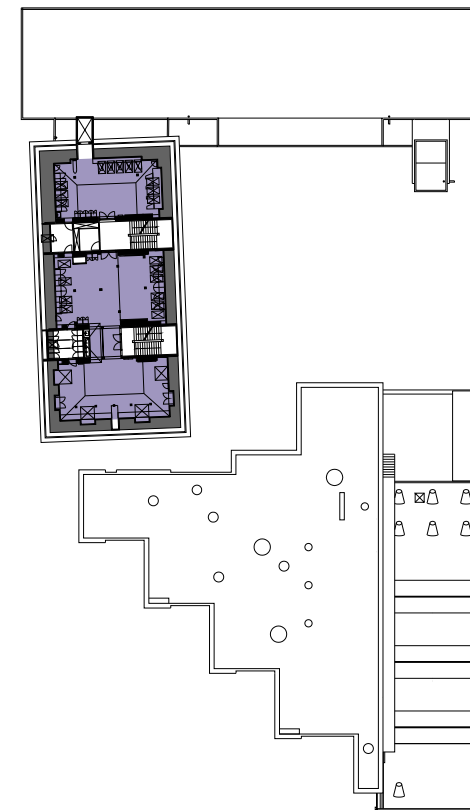
3. sal












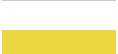


4. sal



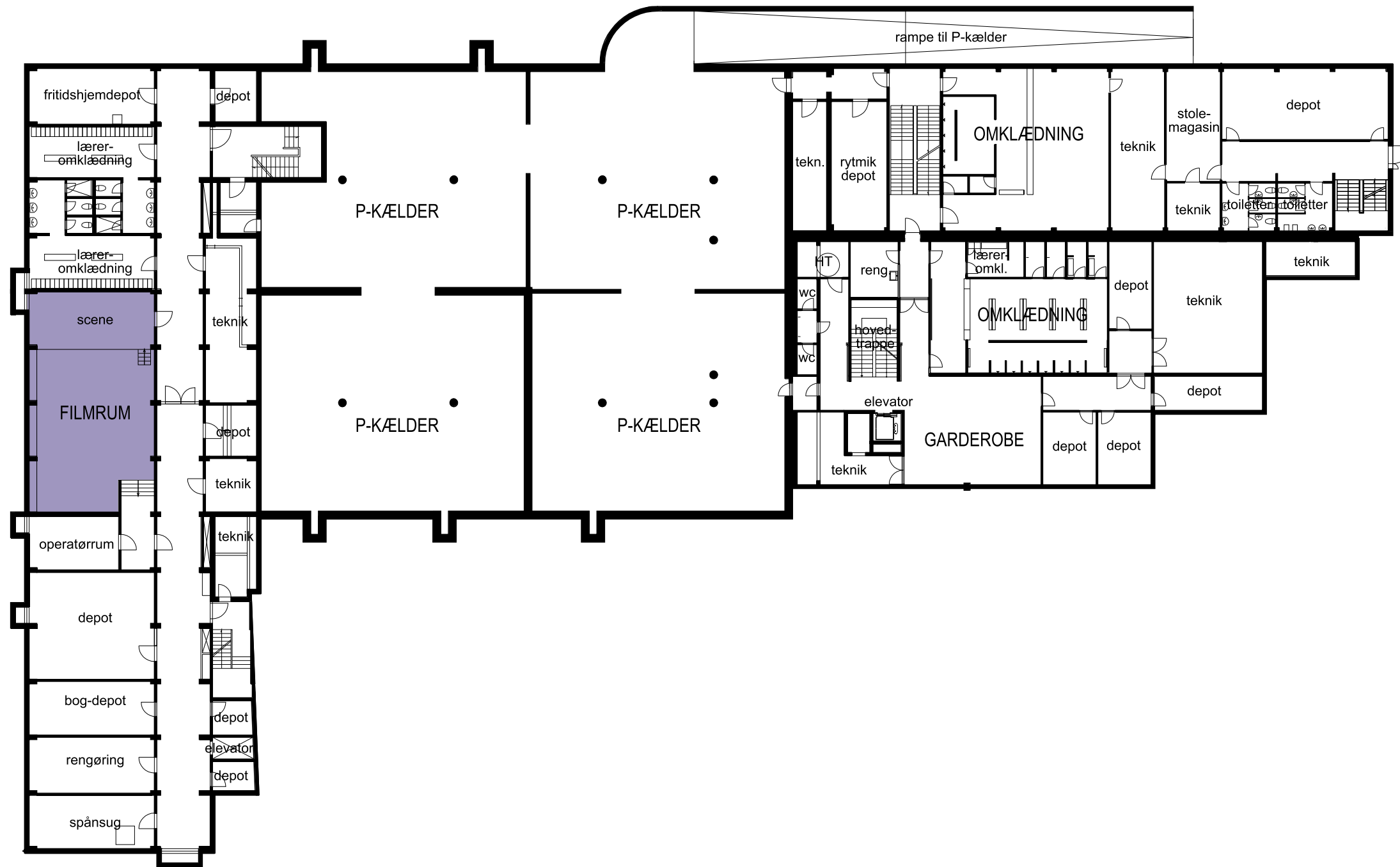
5. sal



HOVEDPLANER

indskoling - klasse	
indskoling - fælles	
melletrin - klasse	
melletrin - fælles	
udskoling - klasse	
udskoling - fælles	
faglokaler	
adm./personale	
pædagogisk servicecenter	
special- og sprogcenter	
fritidshjem	
depot, teknik, trapper, toiletter m.m.	

KÆLDERPLAN



- indskoling - klasse
- indskoling - fælles
- melletrin - klasse
- melletrin - fælles
- udskoling - klasse
- udskoling - fælles
- faglokaler
- adm./personale
- pædagogisk servicecenter
- special- og sprogcenter
- fritidshjem
- depot, teknik, trapper, toiletter m.m.

STUEPLAN (/PARTERRE)



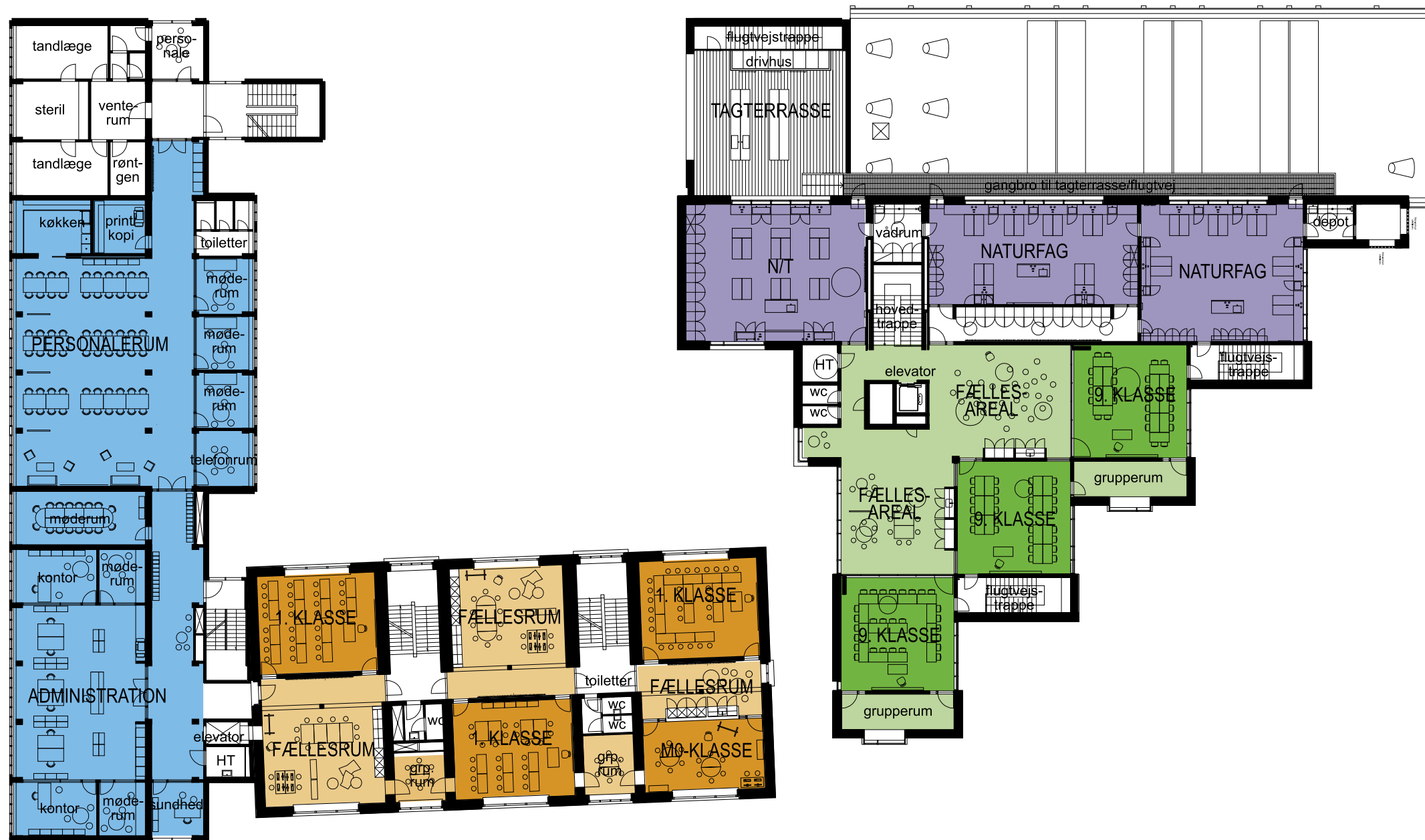
indskoling - klasse	
indskoling - fælles	
mellemtrin - klasse	
mellemtrin - fælles	
udskoling - klasse	
udskoling - fælles	
faglokaler	
adm./personale	
pædagogisk servicecenter	
special- og sprogcenter	
fritidshjem	
depot, teknik, trapper, toiletter m.m.	

1. SAL



- indskoling - klasse
- indskoling - fælles
- mellemtrin - klasse
- mellemtrin - fælles
- udskoling - klasse
- udskoling - fælles
- faglokaler
- adm./personale
- pædagogisk servicecenter
- special- og sprogcenter
- fritidshjem
- depot, teknik, trapper, toiletter m.m.

2. SAL



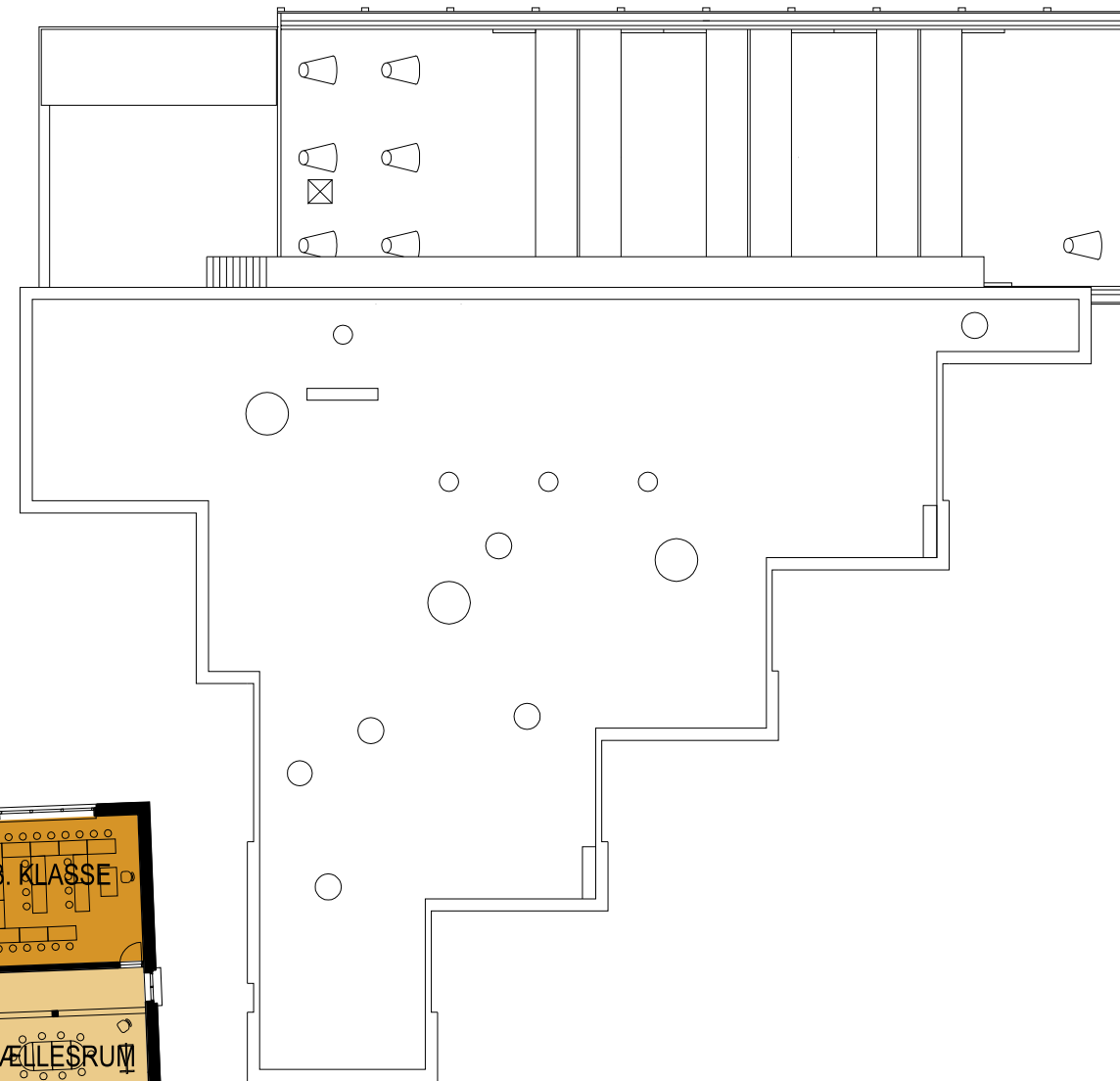
- indskoling - klasse
- indskoling - fælles
- melletrin - klasse
- melletrin - fælles
- udskoling - klasse
- udskoling - fælles
- faglokaler
- adm./personale
- pædagogisk servicecenter
- special- og sprogcenter
- fritidshjem
- depot, teknik, trapper, toiletter m.m.

3. SAL



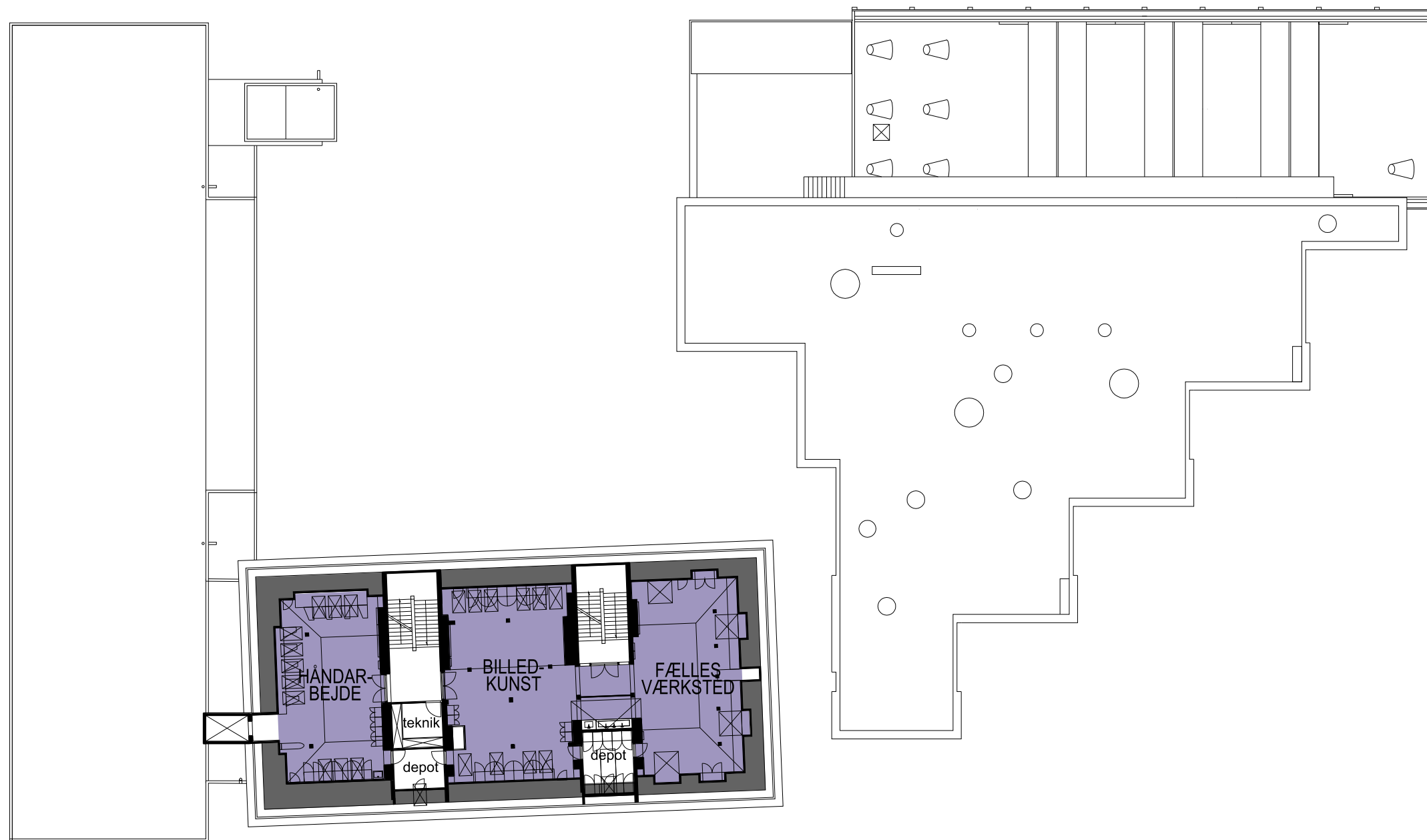
- indskoling - klasse
- indskoling - fælles
- melletrin - klasse
- melletrin - fælles
- udskoling - klasse
- udskoling - fælles
- faglokaler
- adm./personale
- pædagogisk servicecenter
- special- og sprogcenter
- fritidshjem
- depot, teknik, trapper, toiletter m.m.

4. SAL



- indskoling - klasse
- indskoling - fælles
- melletrin - klasse
- melletrin - fælles
- udskoling - klasse
- udskoling - fælles
- faglokaler
- adm./personale
- pædagogisk servicecenter
- special- og sprogcenter
- fritidshjem
- depot, teknik, trapper, toiletter m.m.

5. SAL

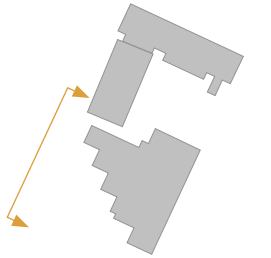


- indskoling - klasse
- indskoling - fælles
- melletrin - klasse
- melletrin - fælles
- udskoling - klasse
- udskoling - fælles
- faglokaler
- adm./personale
- pædagogisk servicecenter
- special- og sprogcenter
- fritidshjem
- depot, teknik, trapper, toiletter m.m.

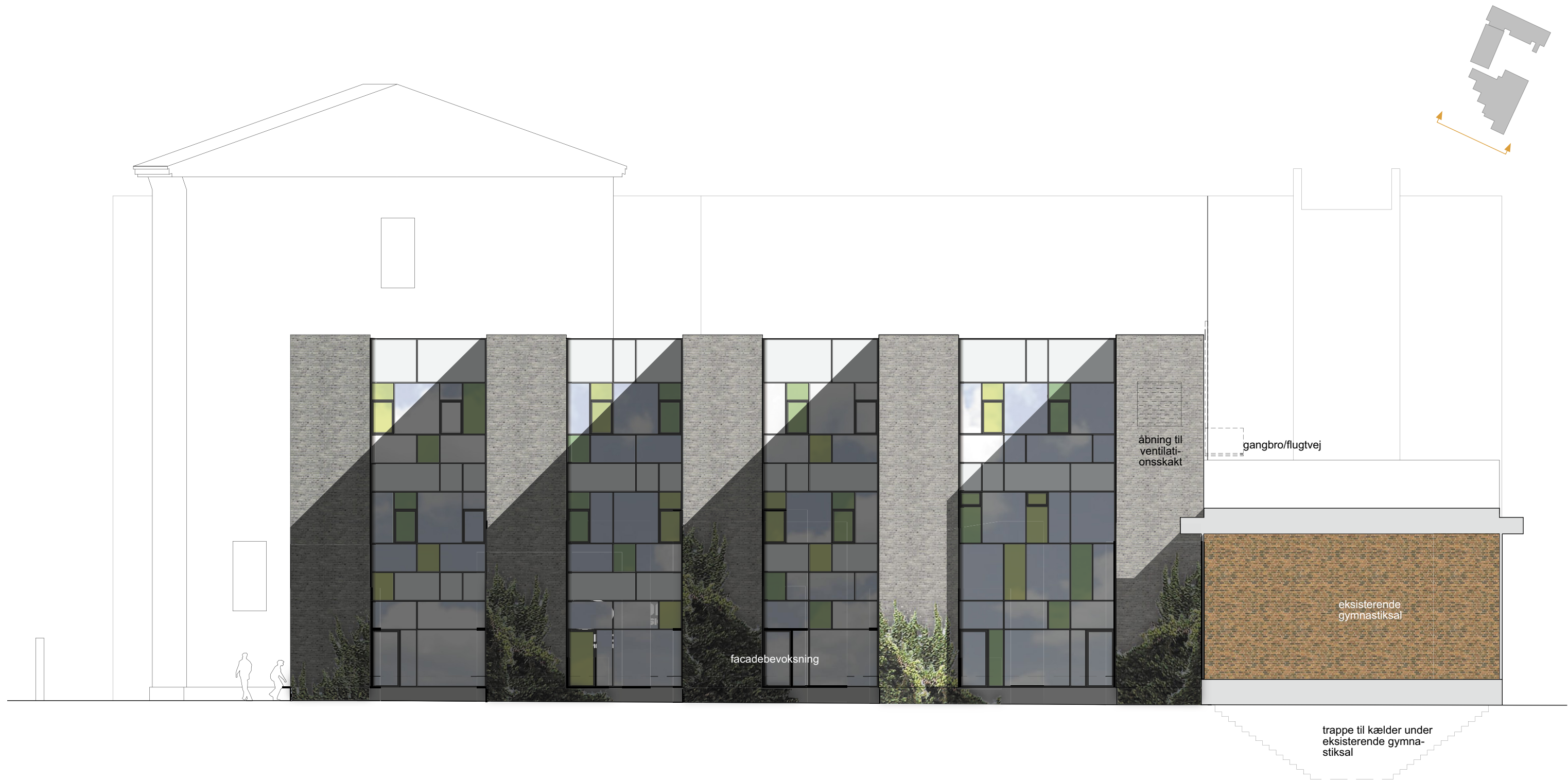
FACADE (NØ) MOD SKOLEGÅRD



FACACE (NV) MOD JAGTVEJ



FACADE (SV) MOD HANS EGEDES GADE



FACADE (SØ) MOD BOLDBANER



FRITIDSHJEMSFACADE BYGNING 2

