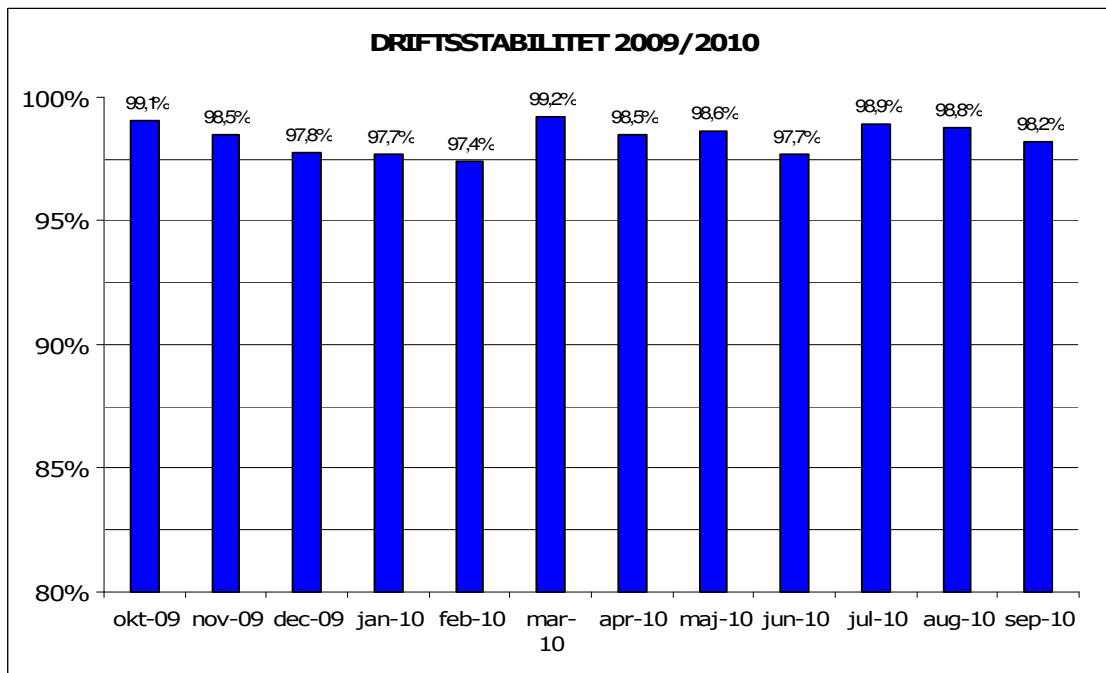


Oktober, 2010

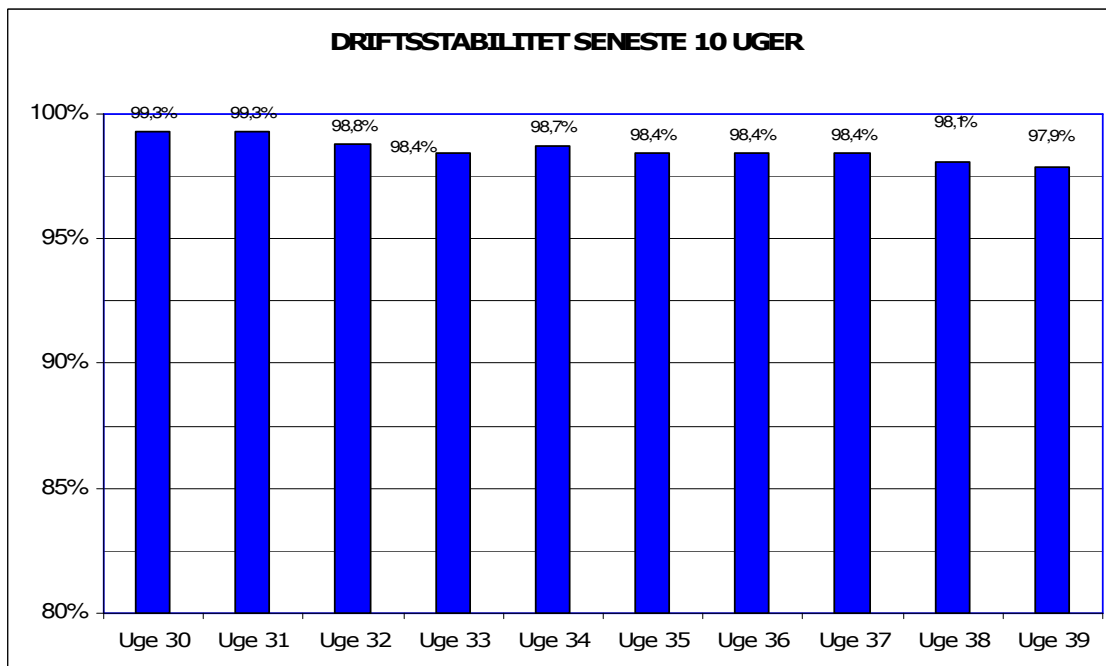
Metroens driftsstabilitet og passagertal uge 39, 2010

Driftsstabilitet

Driftsstabiliteten i september var 98,2 pct.

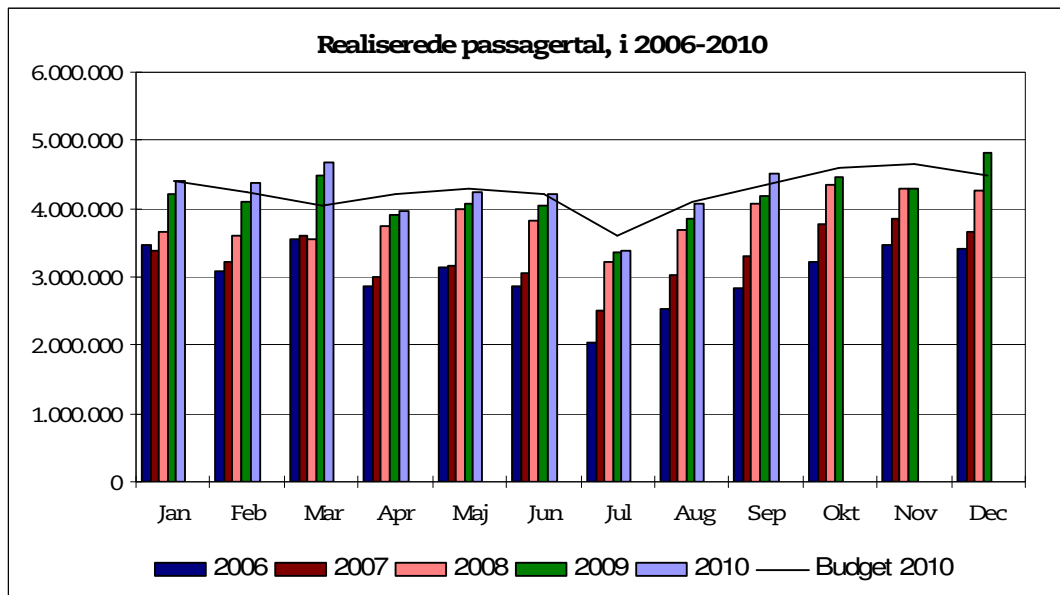


Driftsstabiliteten i uge 39 var 97,9 pct.

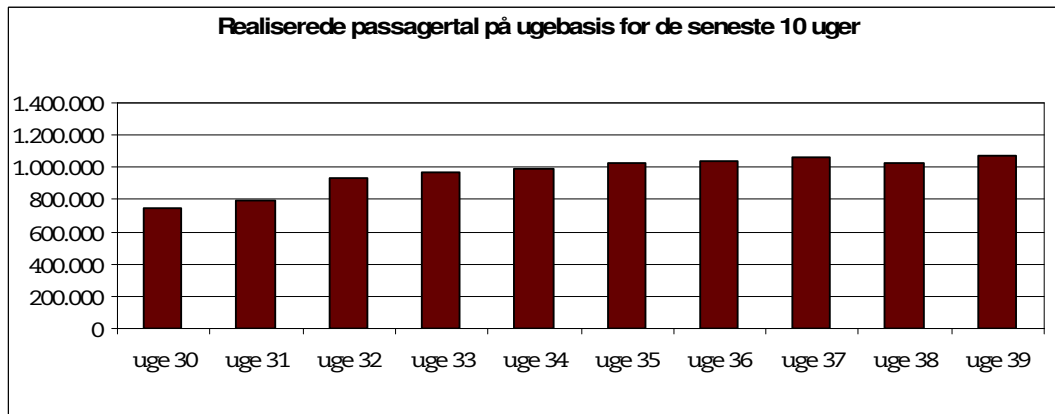


Passagertal

Passagertallet for september 2010 var ca. 4,5 mio.



Passagertallet i uge 39 var ca. 1.067.655



Opgørelser i dette notat bygger på foreløbige tal, hvorfor der tages forbehold for eventuelle senere justeringer.