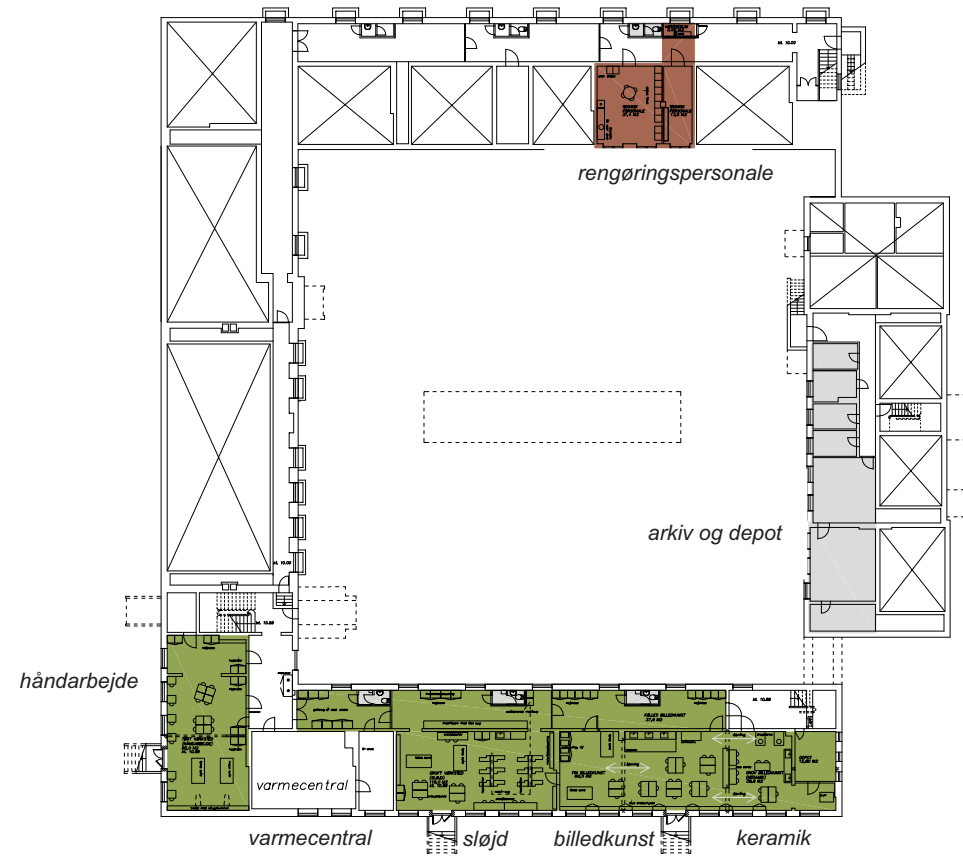
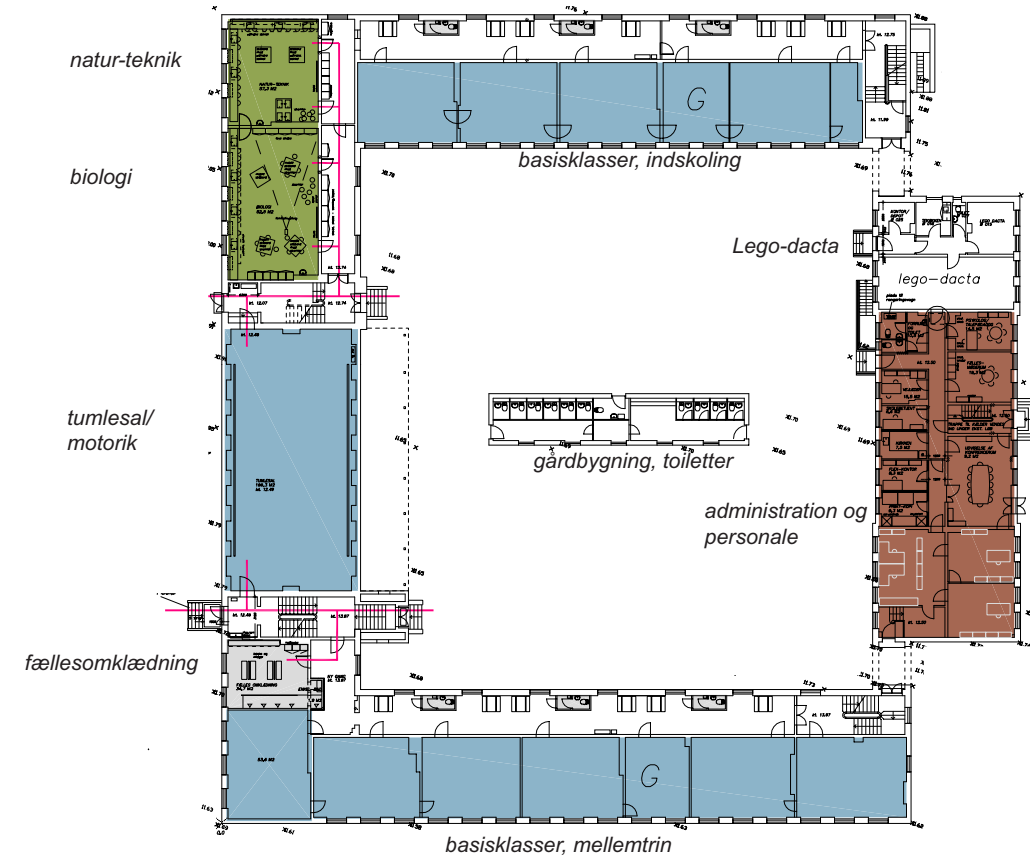


SIGNATURFORKLARING

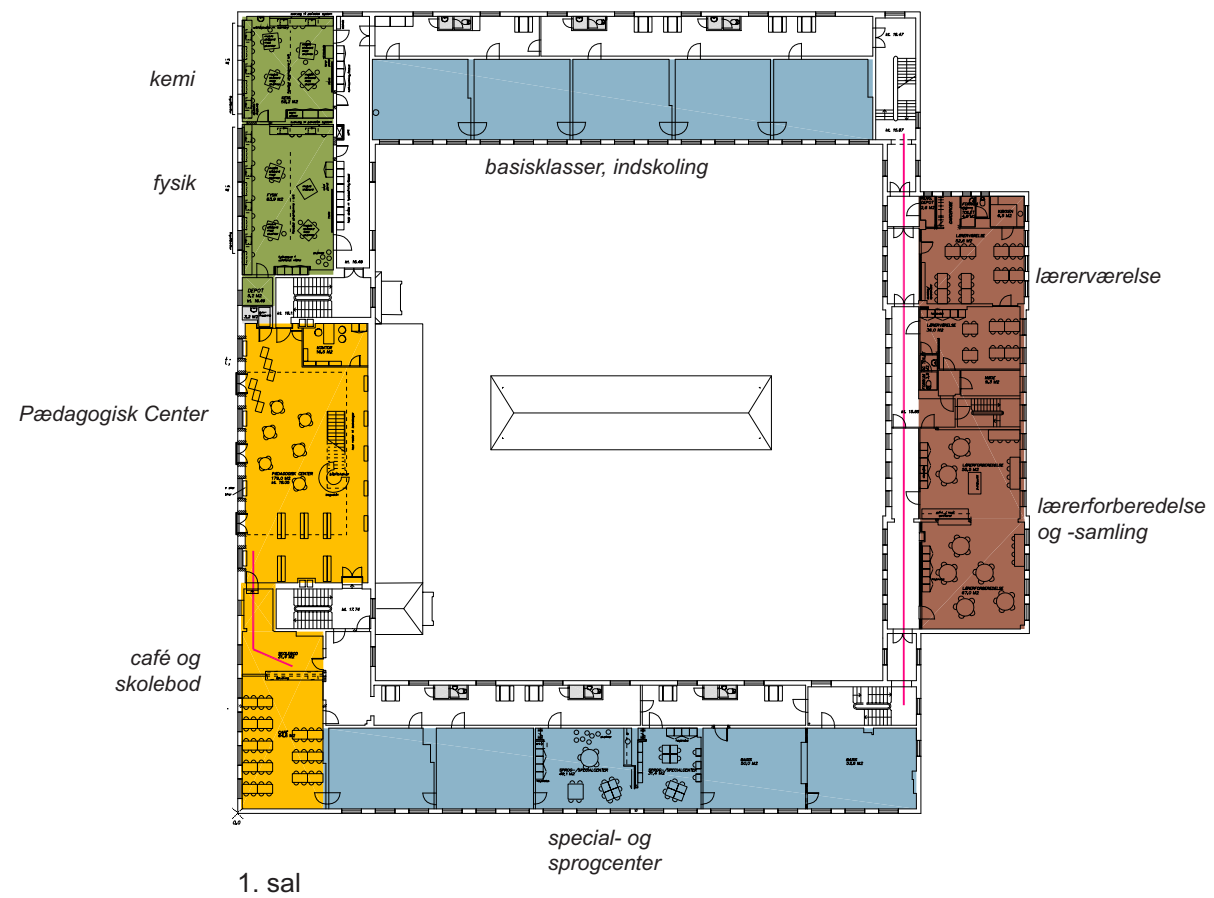
- basisklokal/
grupperum
- faglokaler/
praktisk-æstetisk
- administrations-/
personaleafsnit
- pædagogisk center/
café
- toiletter, omklædning,
garderobe mv.
- læge, sundhedsplejerske



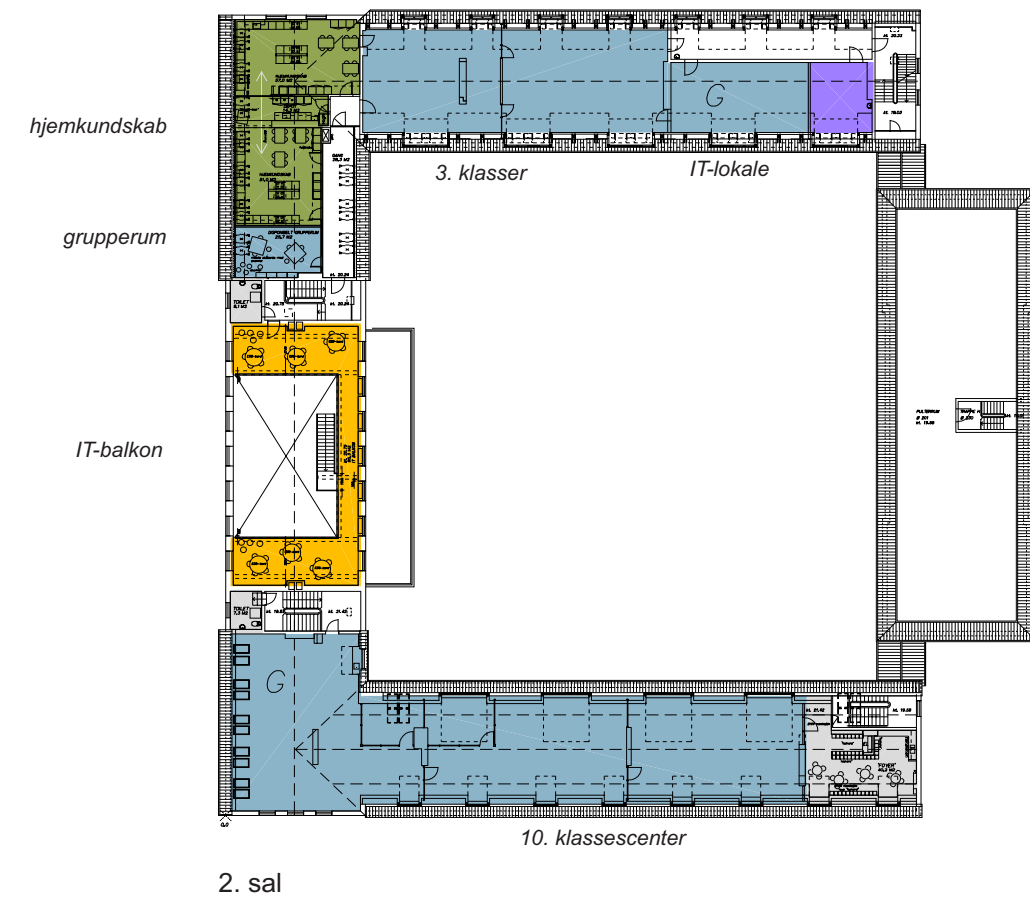
Parterre-etage



Stueetage



1. sal



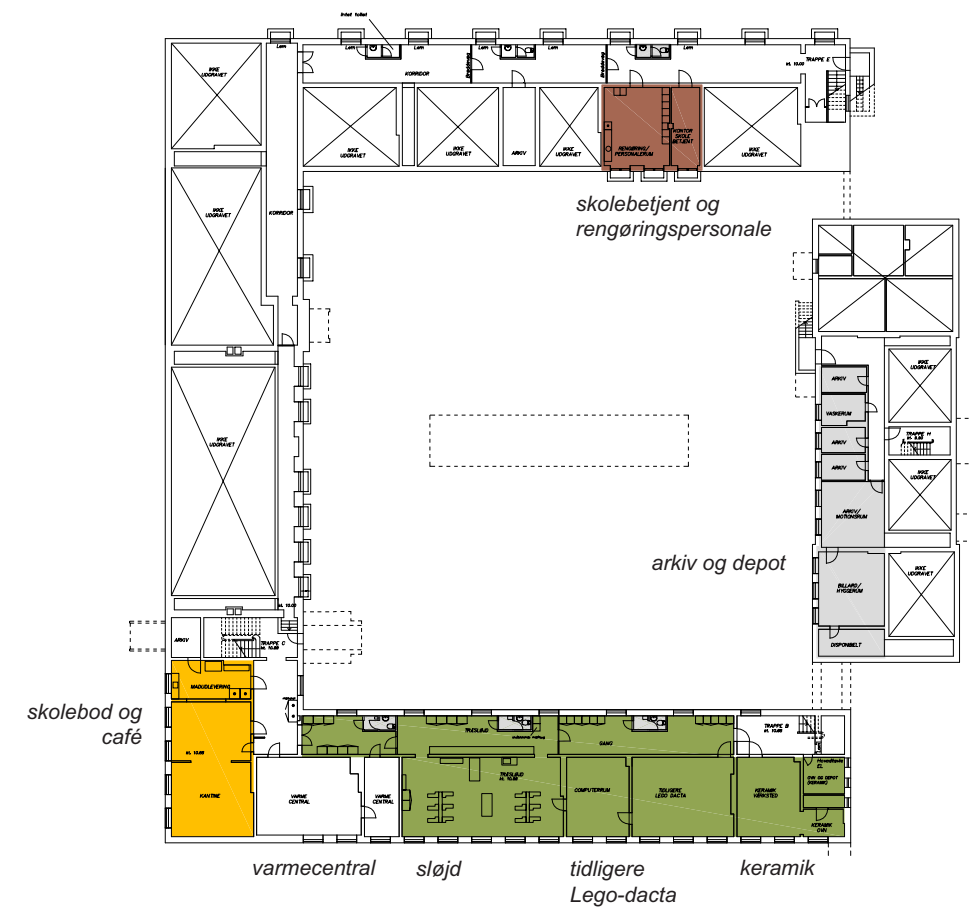
2. sal

FREMTIDIGE FORHOLD

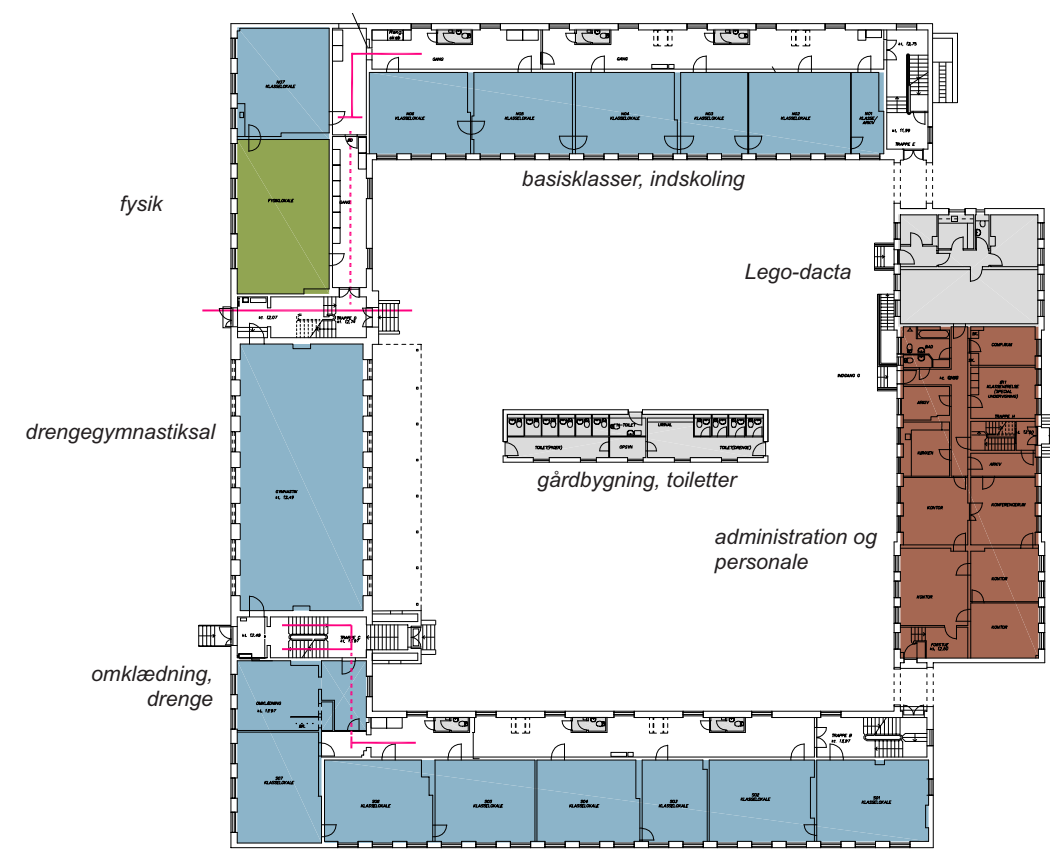
SIGNATURFORKLARING



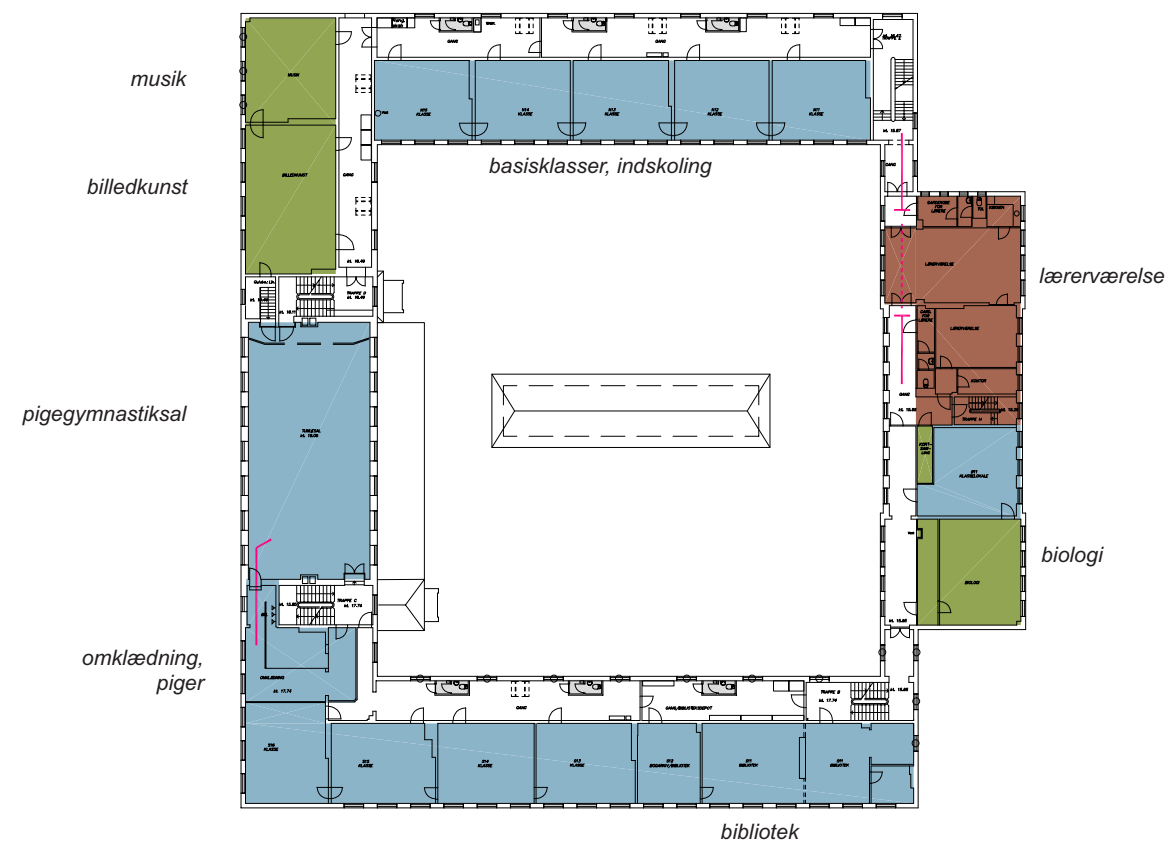
- basisklokal/
grupperum
- faglokaler/
praktisk-æstetisk
- administrations-/
personaleafsnit
- pædagogisk center/
café
- toiletter, omklædning,
garderobe mv.
- læge, sundhedsplejerske



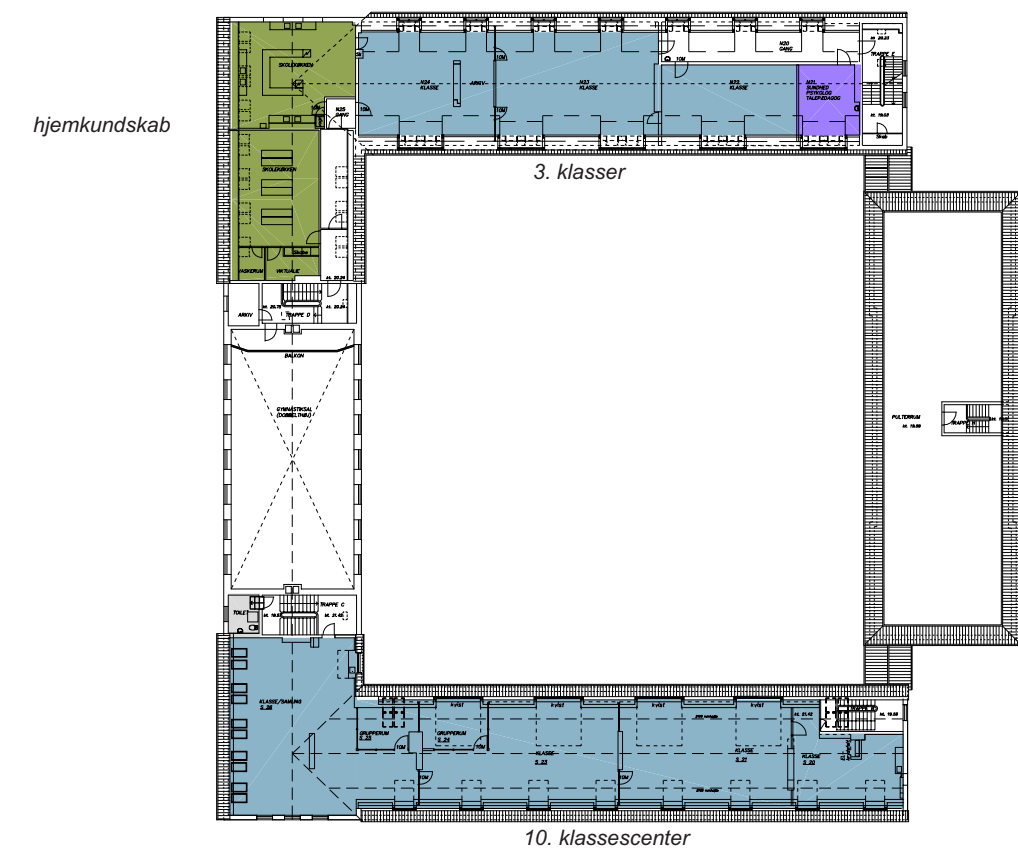
Parterre-etaage



Stueetaage



1. sal



2. sal

EKSISTERENDE FORHOLD