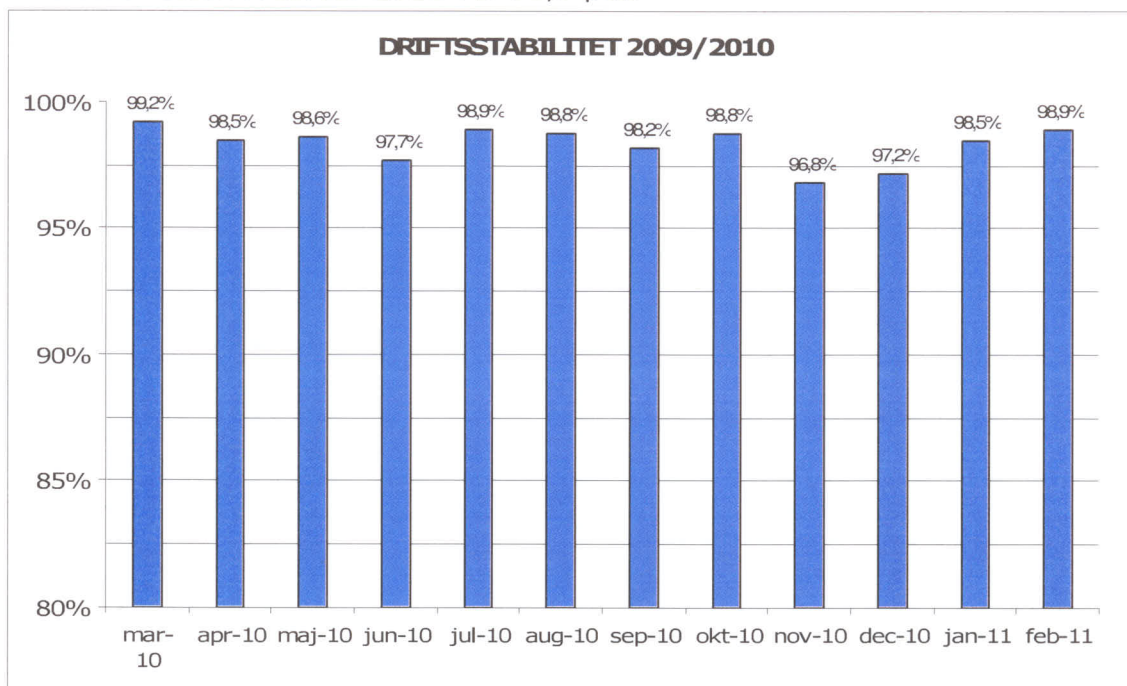


Marts, 2011

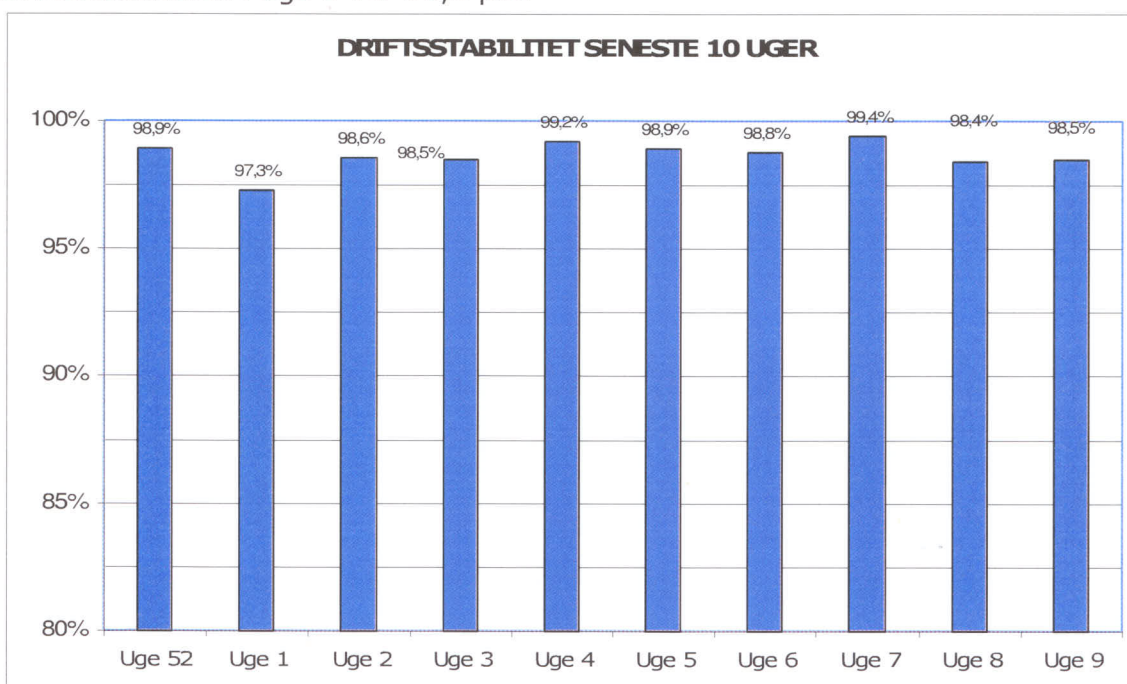
Metroens driftsstabilitet og passagertal uge 9, 2011

Driftsstabilitet

Driftsstabiliteten i februar 2011 var 98,9 pct.

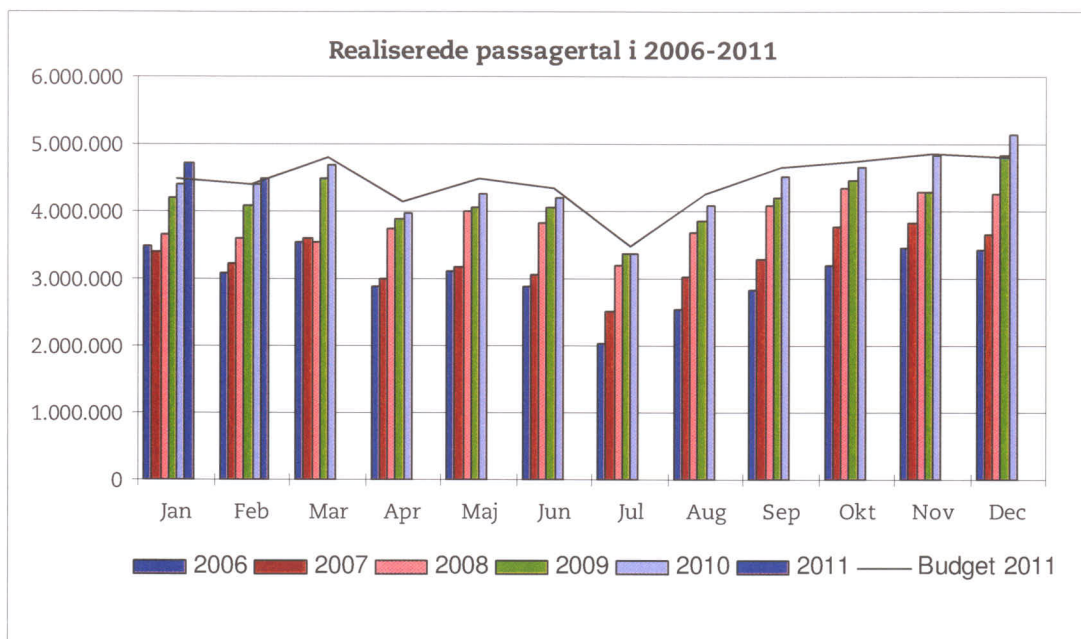


Driftsstabiliteten i uge 9 var 98,5 pct.

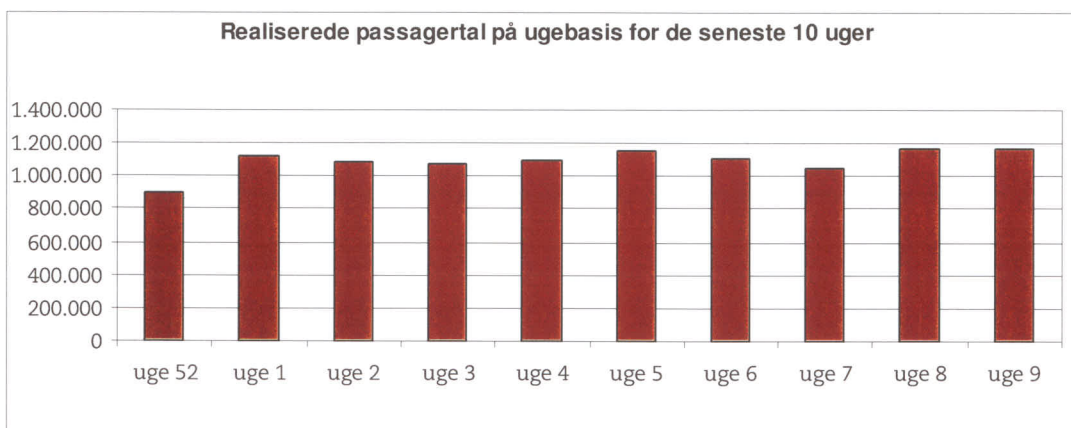


Passagertal

Passagertallet for februar 2011 var ca. 4,5 mio.



Passagertallet i uge 9 var ca. 1.161.752



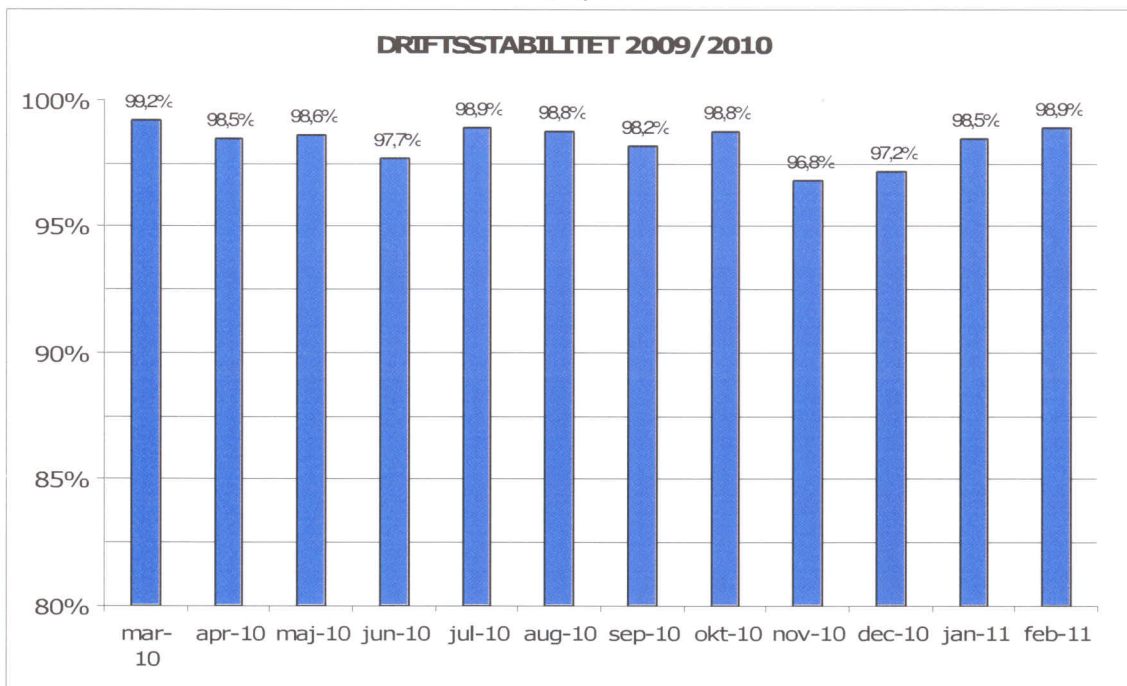
Opgørelser i dette notat bygger på foreløbige tal, hvorfor der tages forbehold for eventuelle senere justeringer.

Marts, 2011

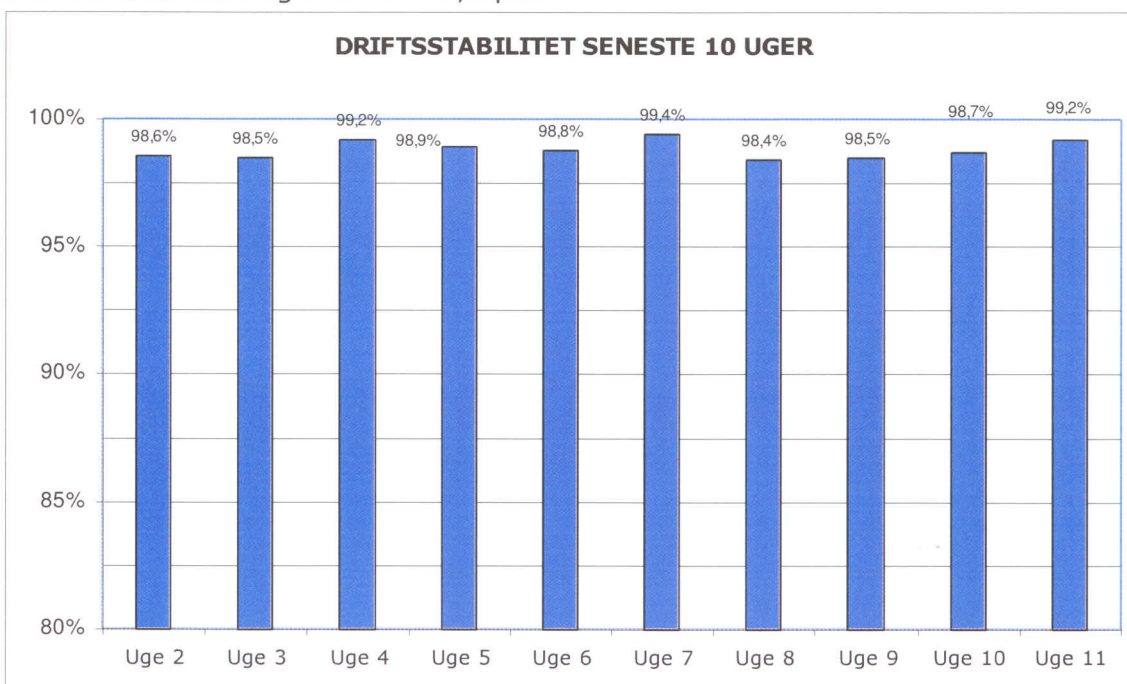
Metroens driftsstabilitet og passagertal uge 11, 2011

Driftsstabilitet

Driftsstabiliteten i februar 2011 var 98,9 pct.

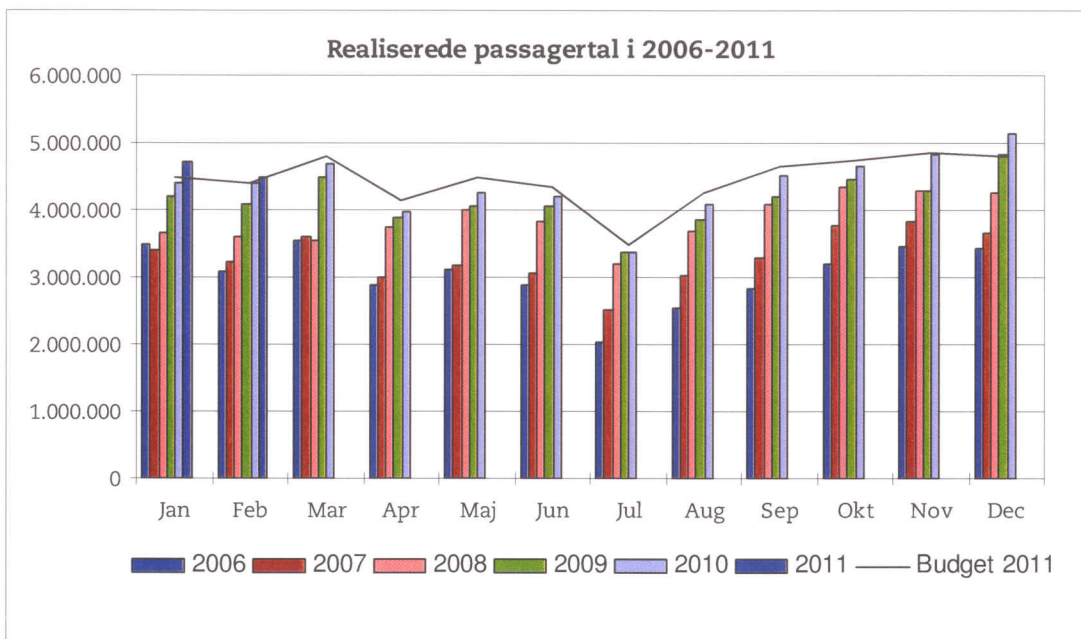


Driftsstabiliteten i uge 11 var 99,2 pct.

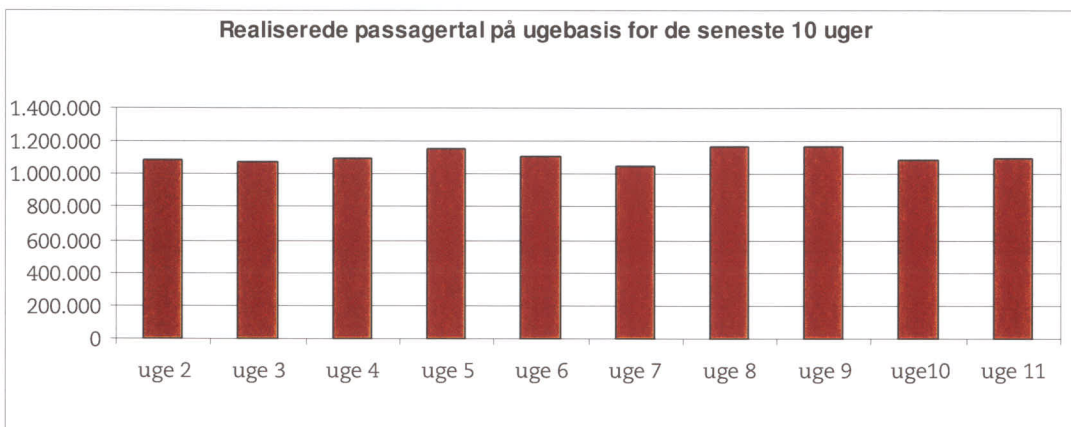


Passagertal

Passagertallet for februar 2011 var ca. 4,5 mio.



Passagertallet i uge 11 var ca. 1.102.297



Opgørelser i dette notat bygger på foreløbige tal, hvorfor der tages forbehold for eventuelle senere justeringer.