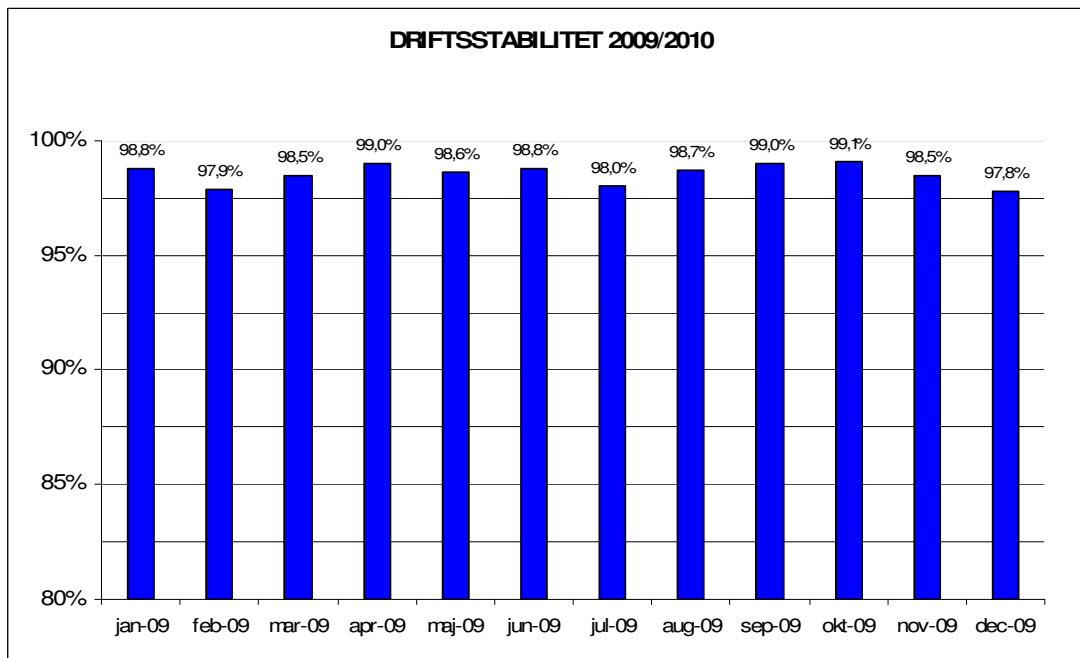


Januar, 2010

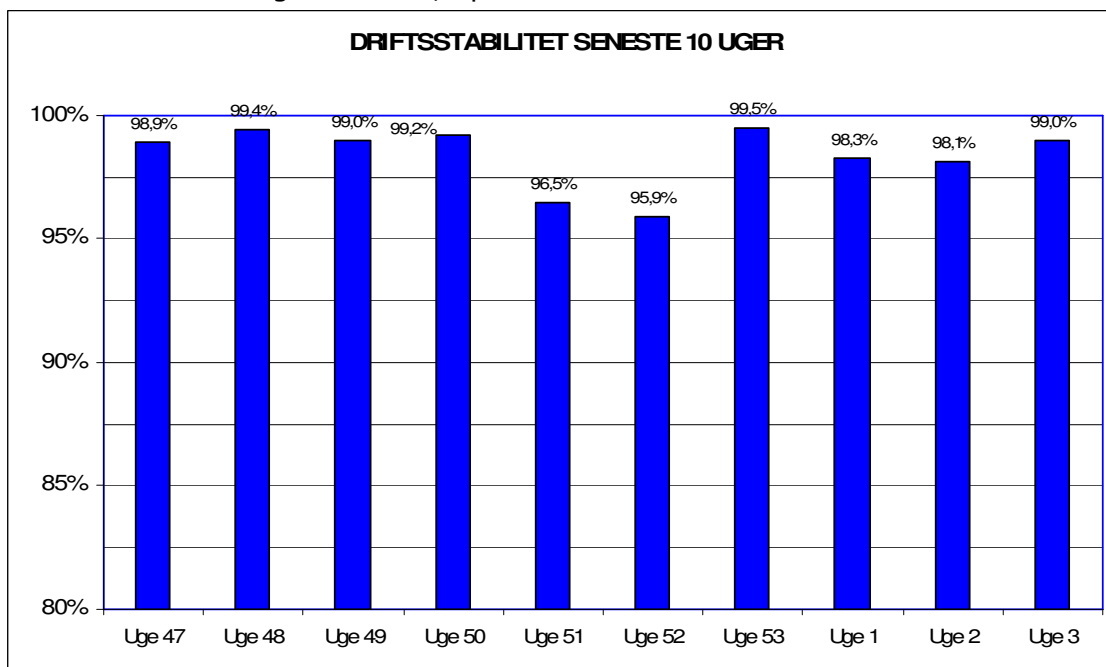
Metroens driftsstabilitet og passagertal uge 3, 2010

Driftsstabilitet

Driftsstabiliteten i december var 97,8 pct.

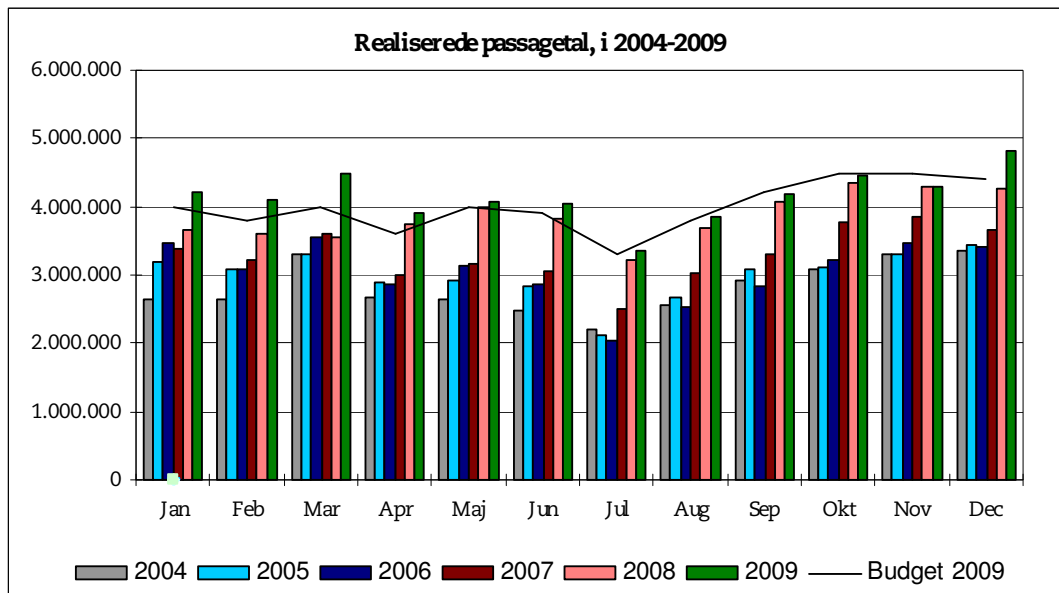


Driftsstabiliteten i uge 3 var 99,0 pct.

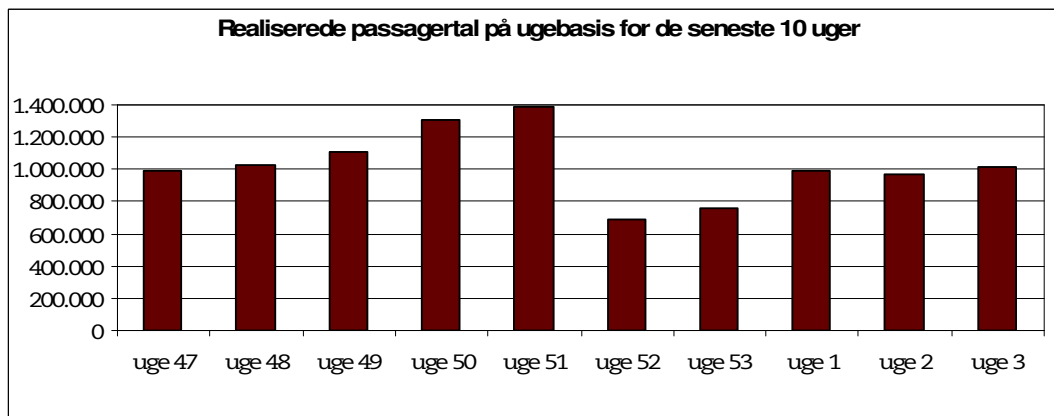


Passagertal

Passagertallet for december 2009 var ca. 4,8 mio.



Passagertallet i uge 3 var 1.017.067



Opgørelser i dette notat bygger på foreløbige tal, hvorfor der tages forbehold for eventuelle senere justeringer.