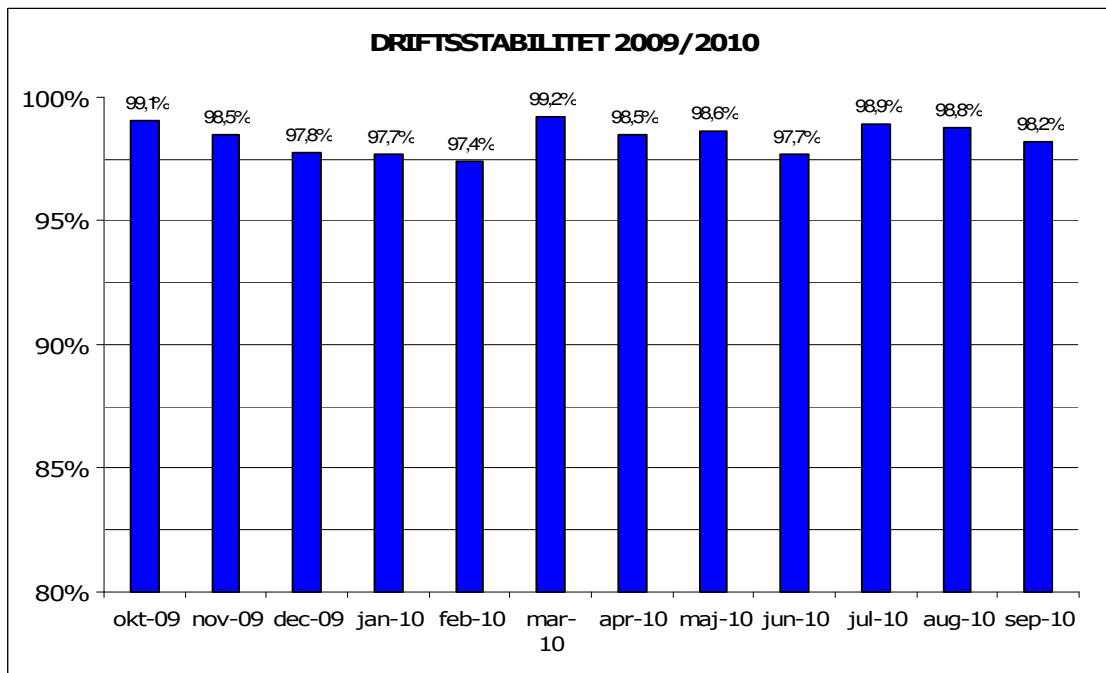


Oktober, 2010

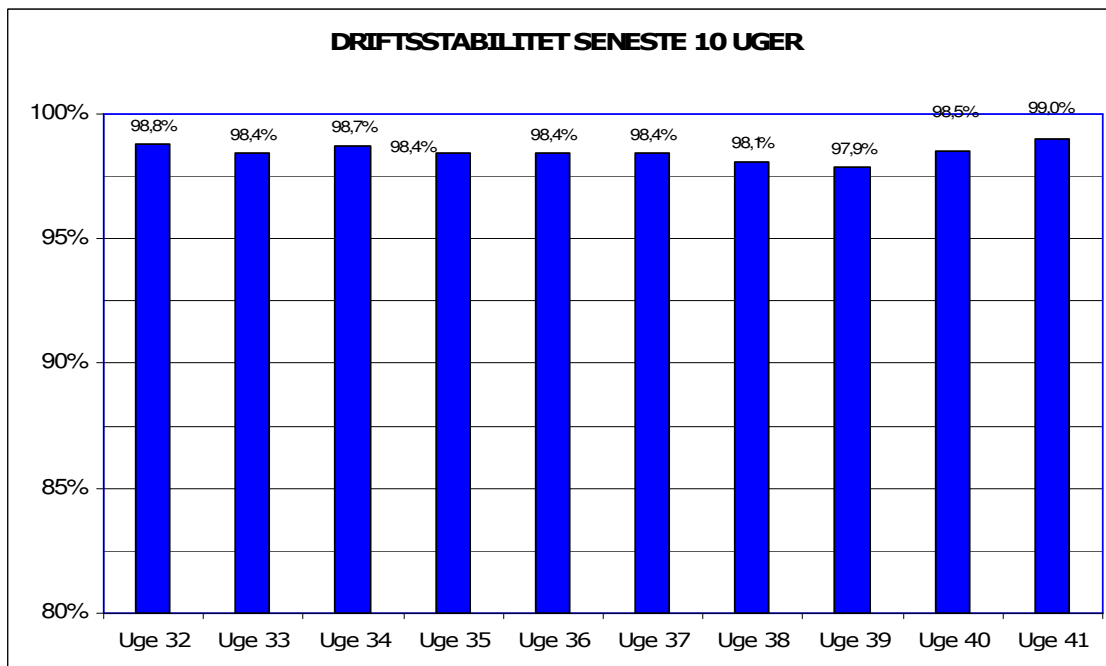
Metroens driftsstabilitet og passagertal uge 41, 2010

Driftsstabilitet

Driftsstabiliteten i september var 98,2 pct.

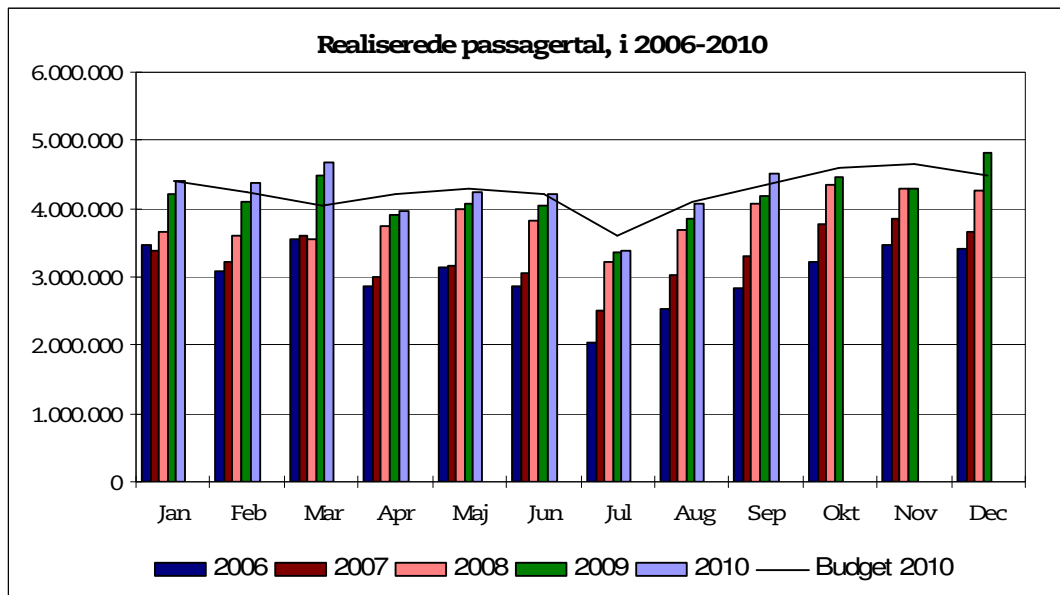


Driftsstabiliteten i uge 41 var 99 pct.

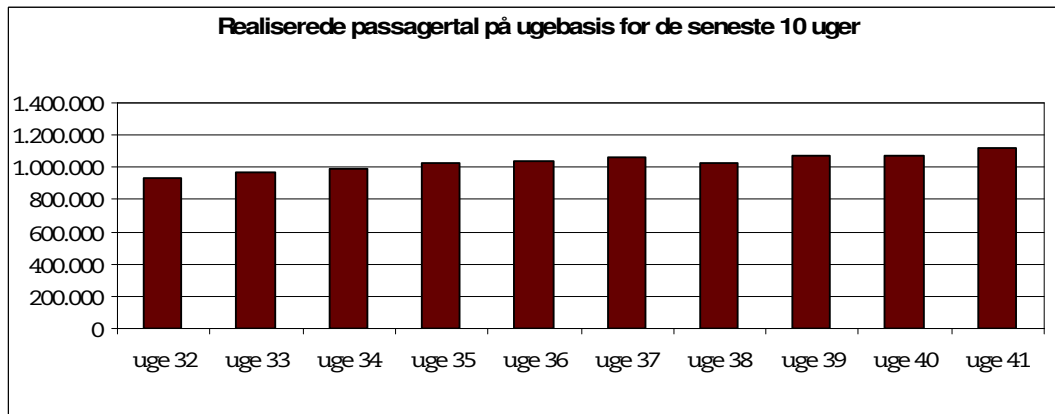


Passagertal

Passagertallet for september 2010 var ca. 4,5 mio.



Passagertallet i uge 41 var ca. 1.118.443



Opgørelser i dette notat bygger på foreløbige tal, hvorfor der tages forbehold for eventuelle senere justeringer.