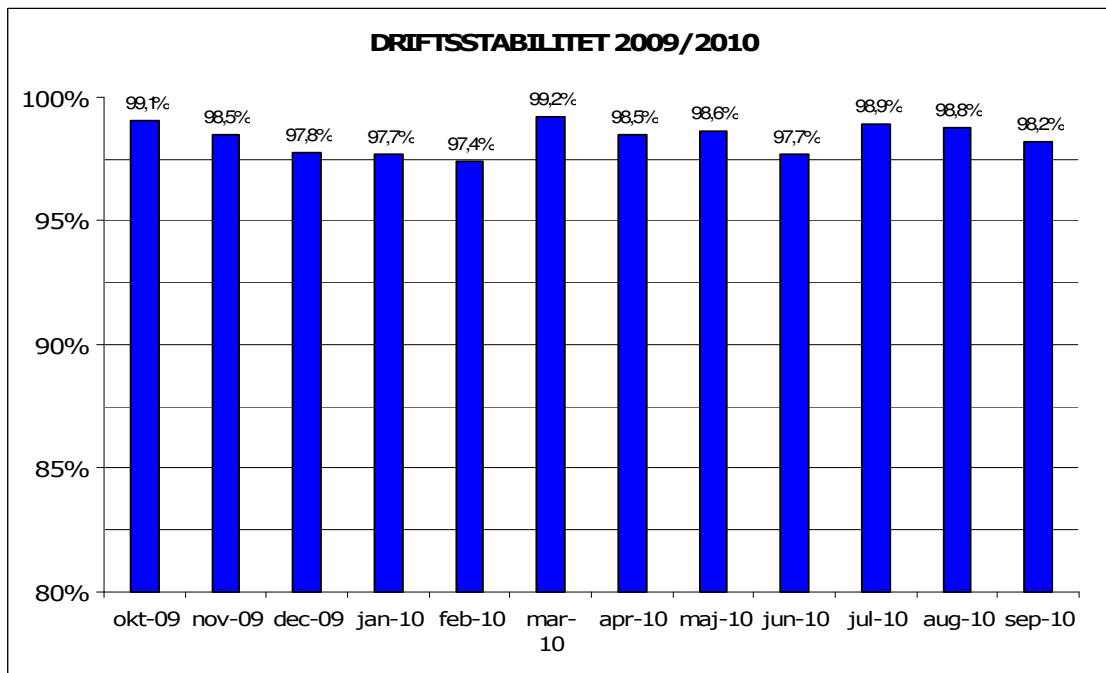


Oktober, 2010

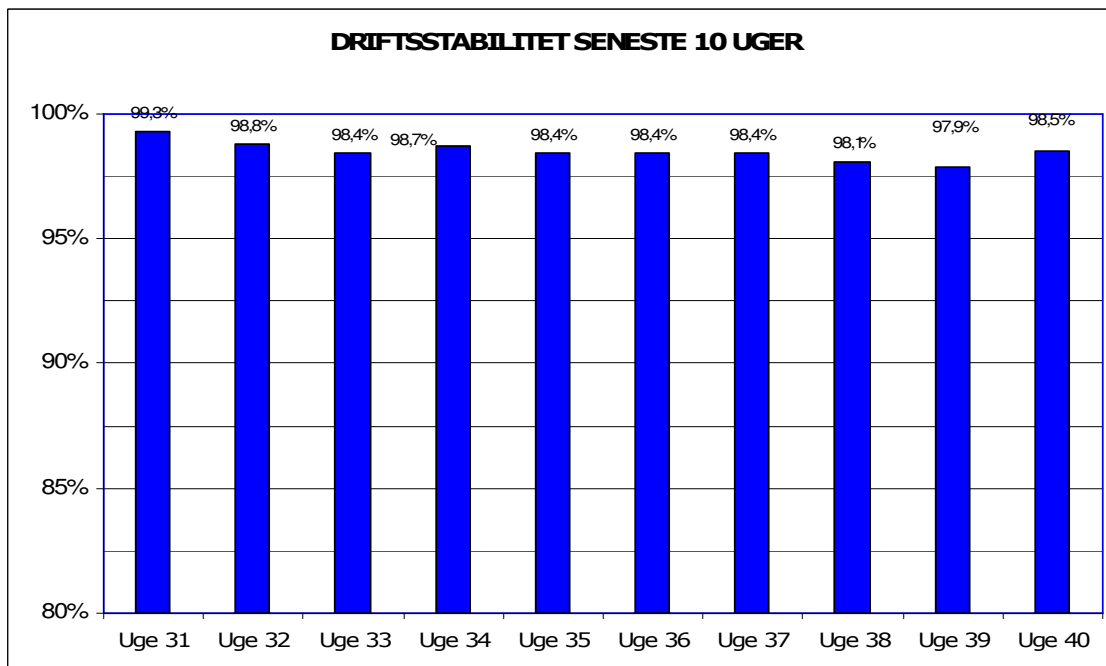
## Metroens driftsstabilitet og passagertal uge 40, 2010

### Driftsstabilitet

Driftsstabiliteten i september var 98,2 pct.

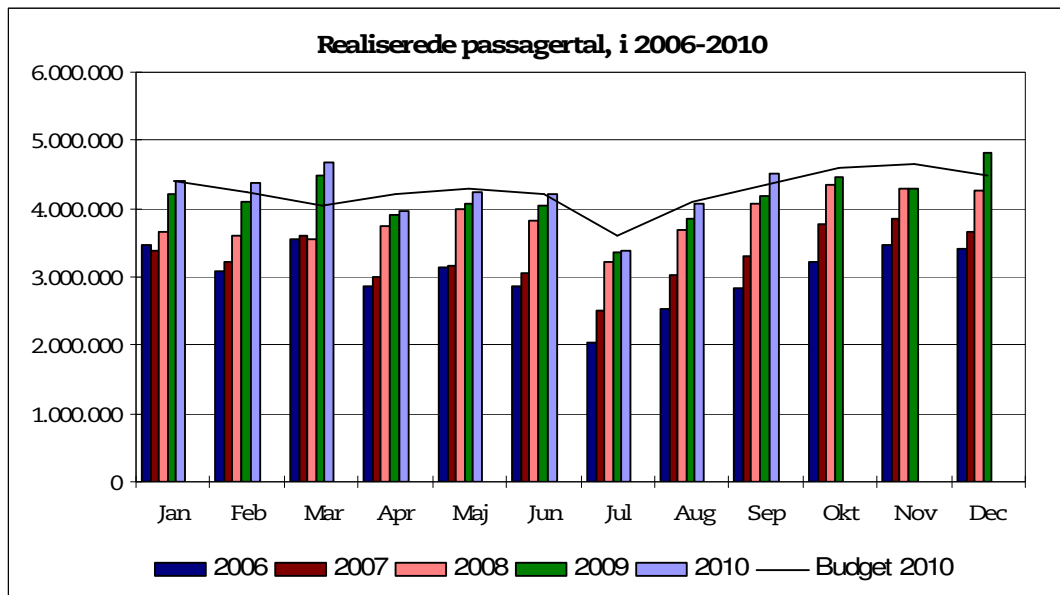


Driftsstabiliteten i uge 40 var 98,5 pct.

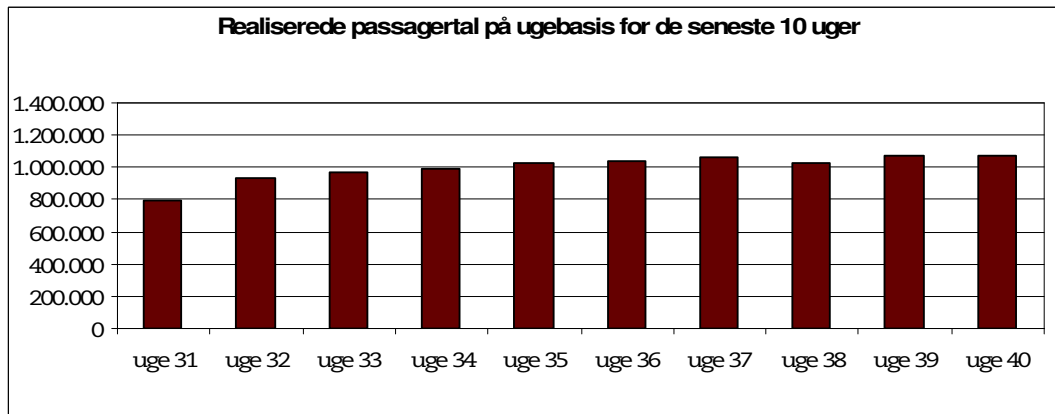


## Passagertal

Passagertallet for september 2010 var ca. 4,5 mio.



Passagertallet i uge 40 var ca. 1.078.238



Opgørelser i dette notat bygger på foreløbige tal, hvorfor der tages forbehold for eventuelle senere justeringer.