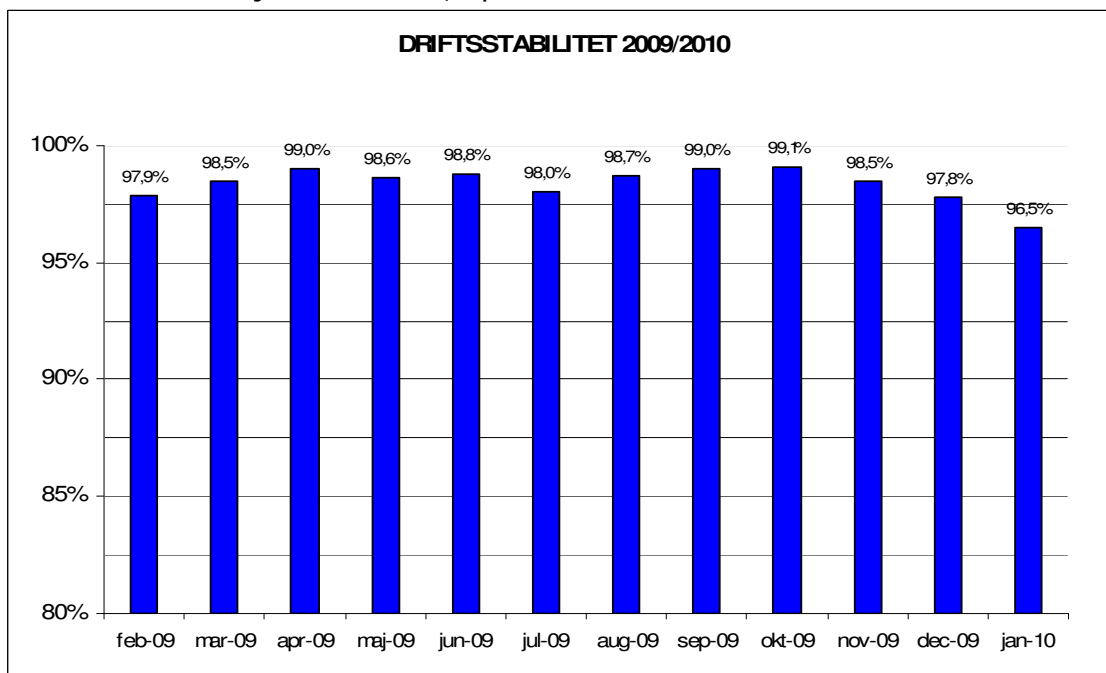


Februar, 2010

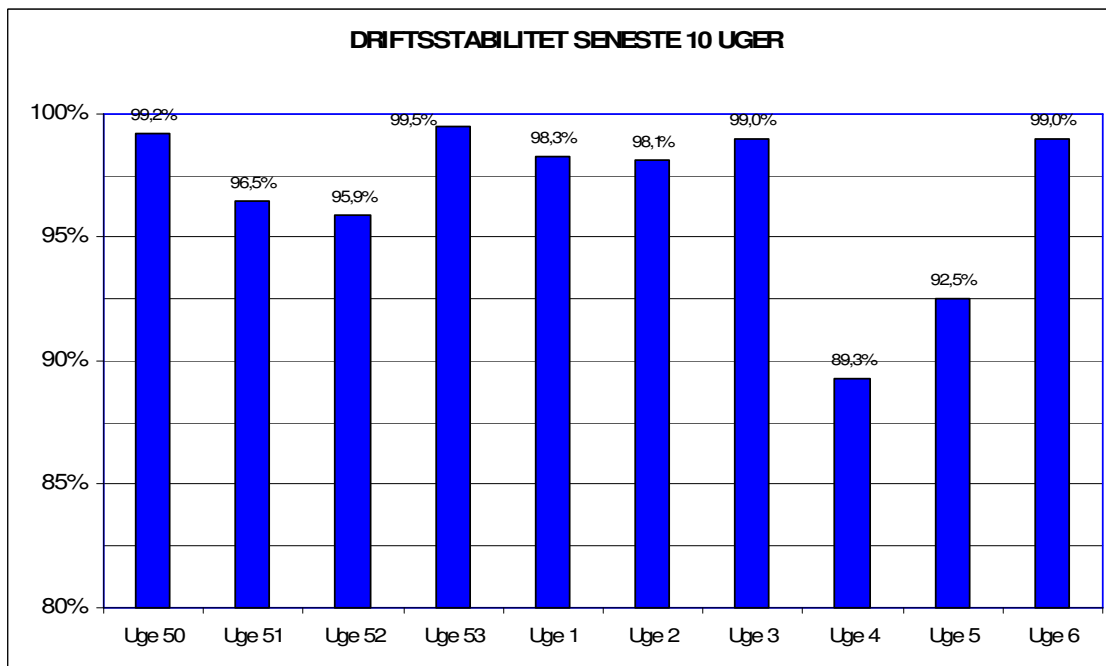
Metroens driftsstabilitet og passagertal uge 6, 2010

Driftsstabilitet

Driftsstabiliteten i januar var 96,5 pct.

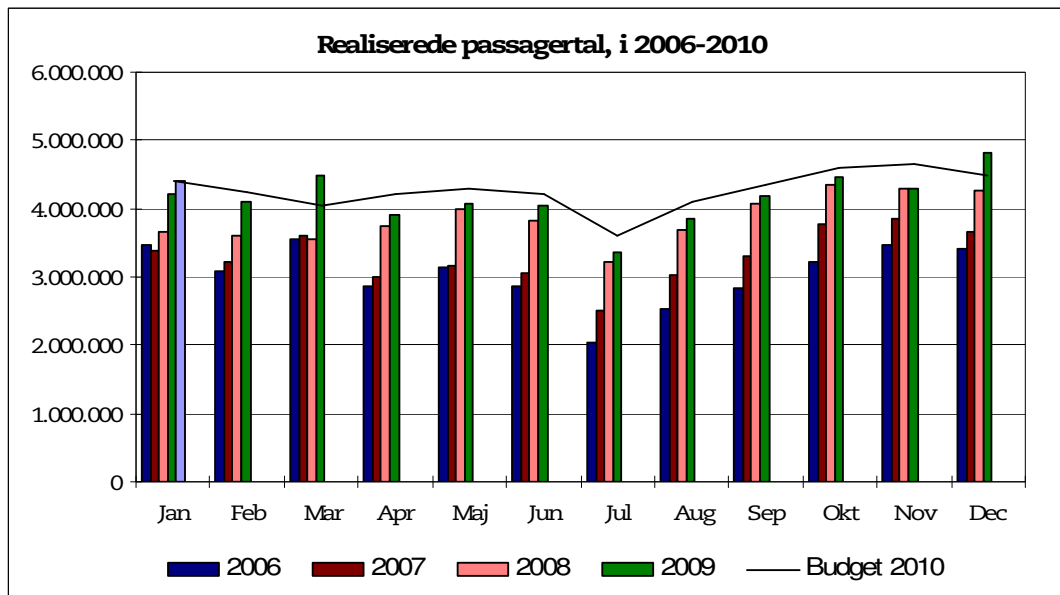


Driftsstabiliteten i uge 6 var 99,0 pct.

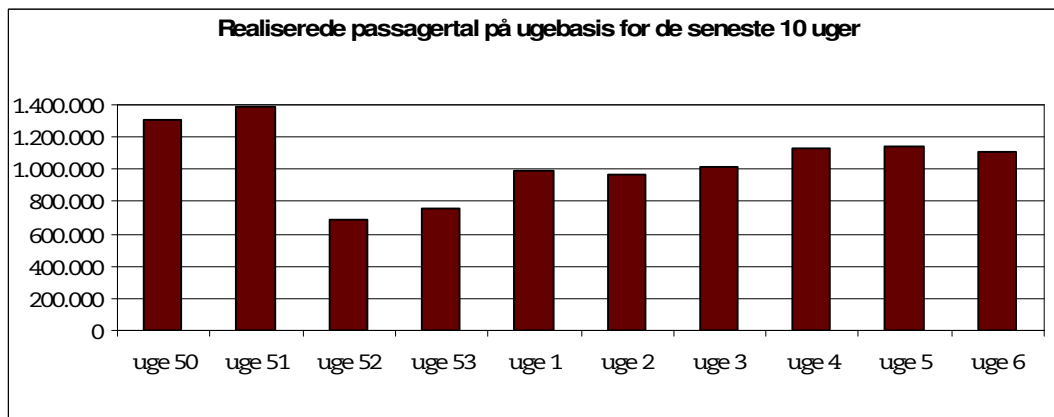


Passagertal

Passagertallet for januar 2010 var ca. 4,4 mio.



Passagertallet i uge 6 var 1.109.237



Opgørelser i dette notat bygger på foreløbige tal, hvorfor der tages forbehold for eventuelle senere justeringer.