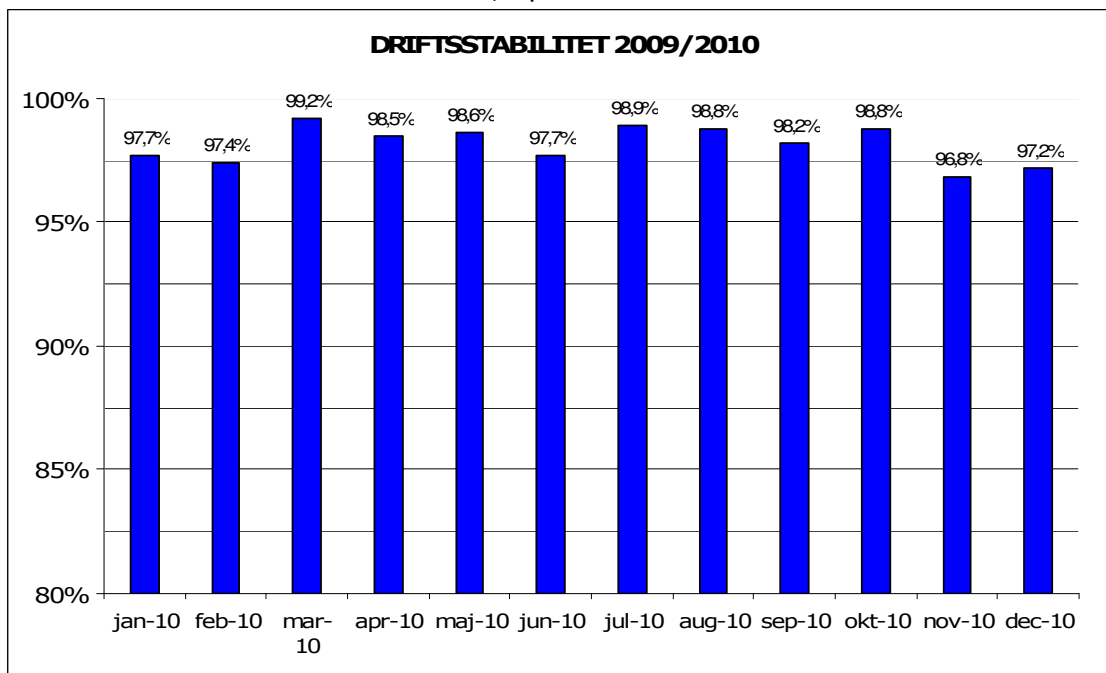


Januar, 2011

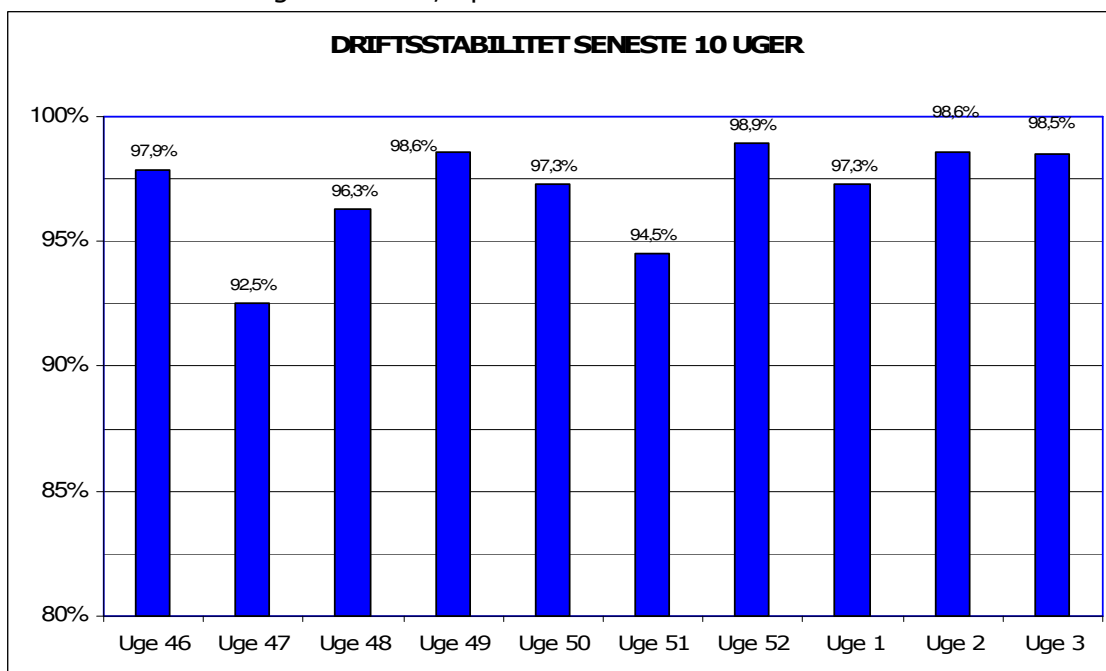
Metroens driftsstabilitet og passagertal uge 3, 2011

Driftsstabilitet

Driftsstabiliteten i december var 97,2 pct.

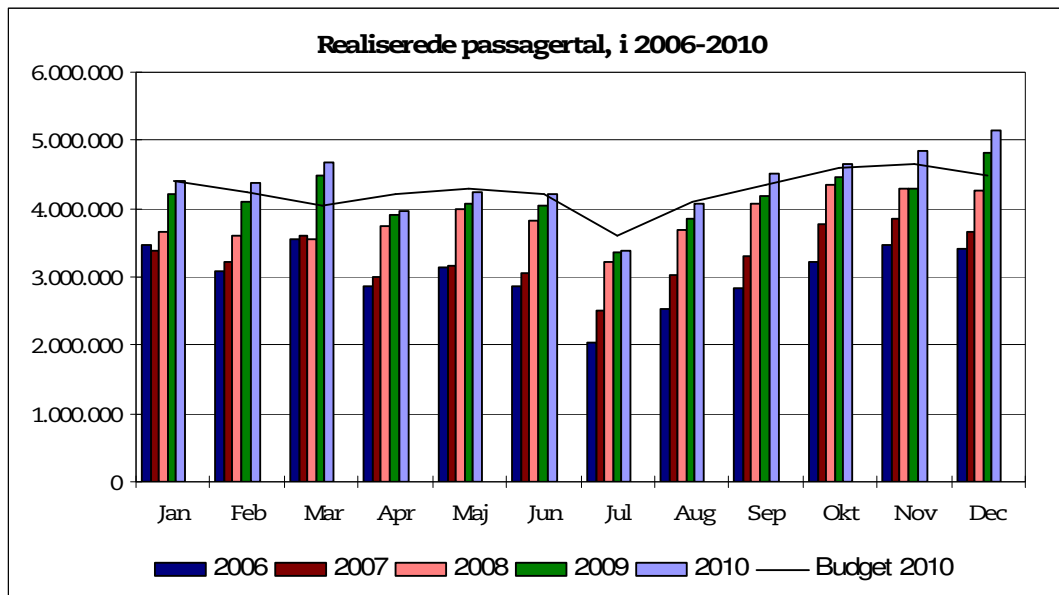


Driftsstabiliteten i uge 3 var 98,5 pct.

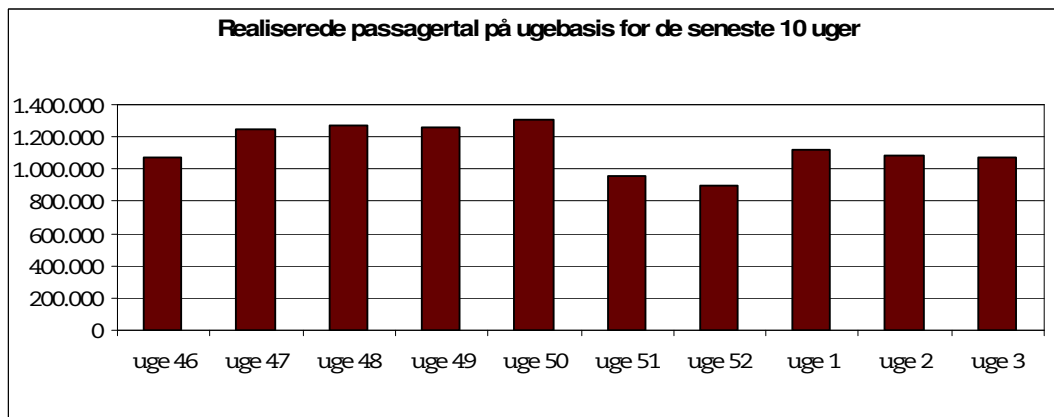


Passagertal

Passagertallet for december 2010 var ca. 5,1 mio.



Passagertallet i uge 3 var ca. 1.069.253



Opgørelser i dette notat bygger på foreløbige tal, hvorfor der tages forbehold for eventuelle senere justeringer.