

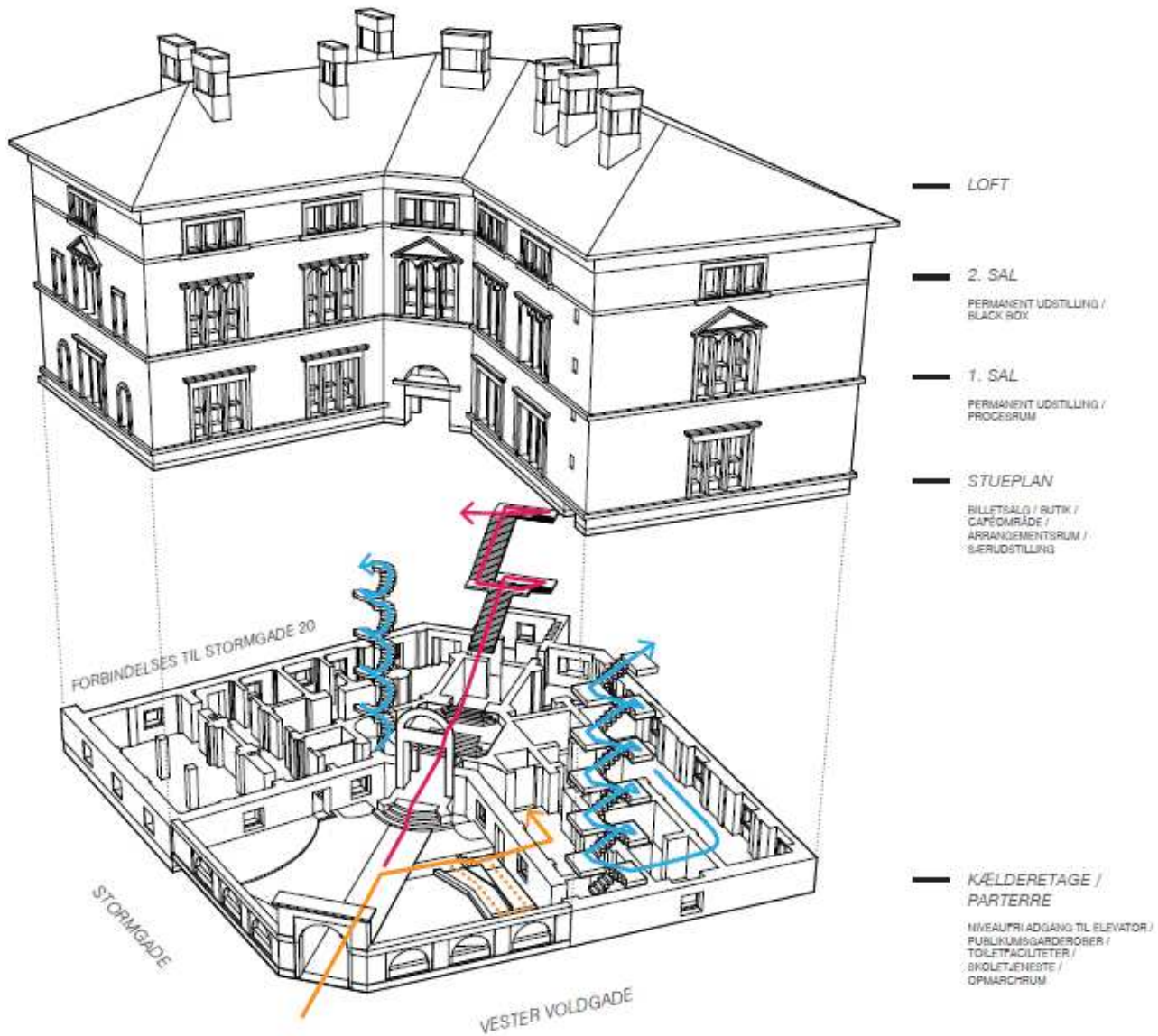
FLYTNING AF KØBENHAVNS MUSEUM TIL STORMGADE 18-20
UDDRAG FRA PROJEKTFORSLAG



Stormgade 20 – på hjørnet mellem H.C. Andersens Boulevard og Stormgade.
Stormgade 18 – på hjørnet mellem Vester Voldgade og Stormgade.



Stormgade 18. Gårdtrummet.



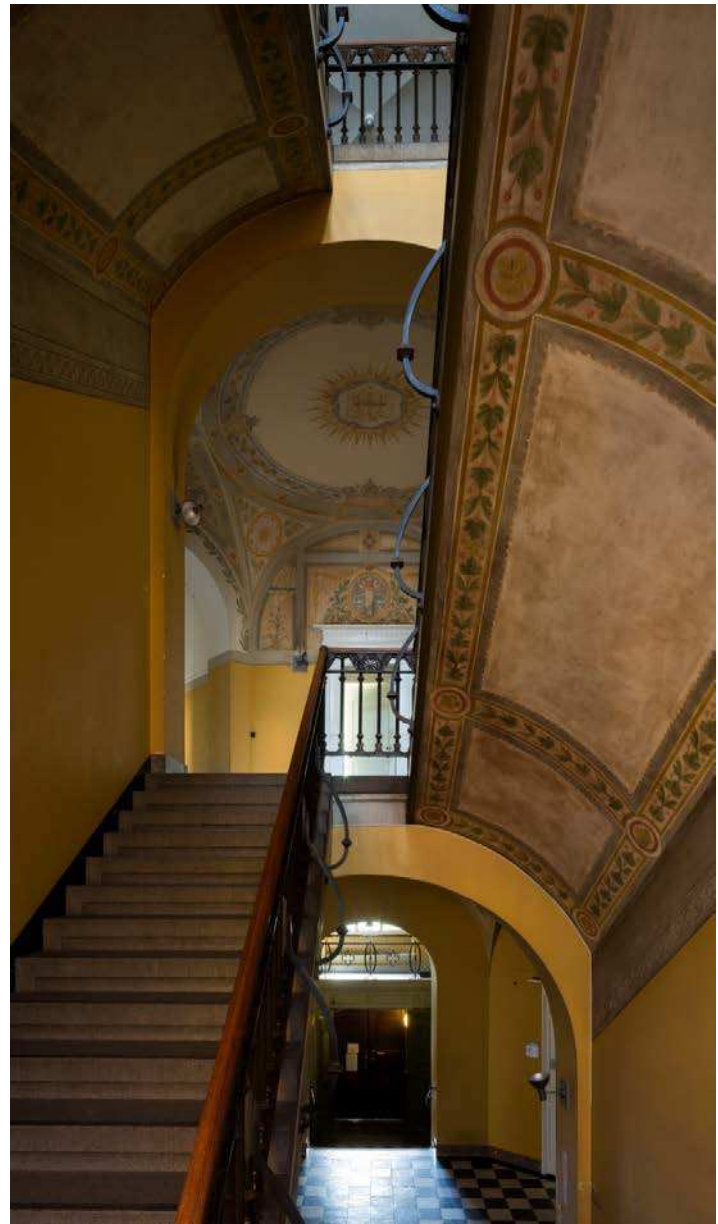
LEGENDE | BEVÆGELSER

- █ DEN CENTRALE HOVEDTRAPPE
- █ NIVEAUFRI ADGANGSVEJ
- █ SEKUNDÆRE TRAPPER

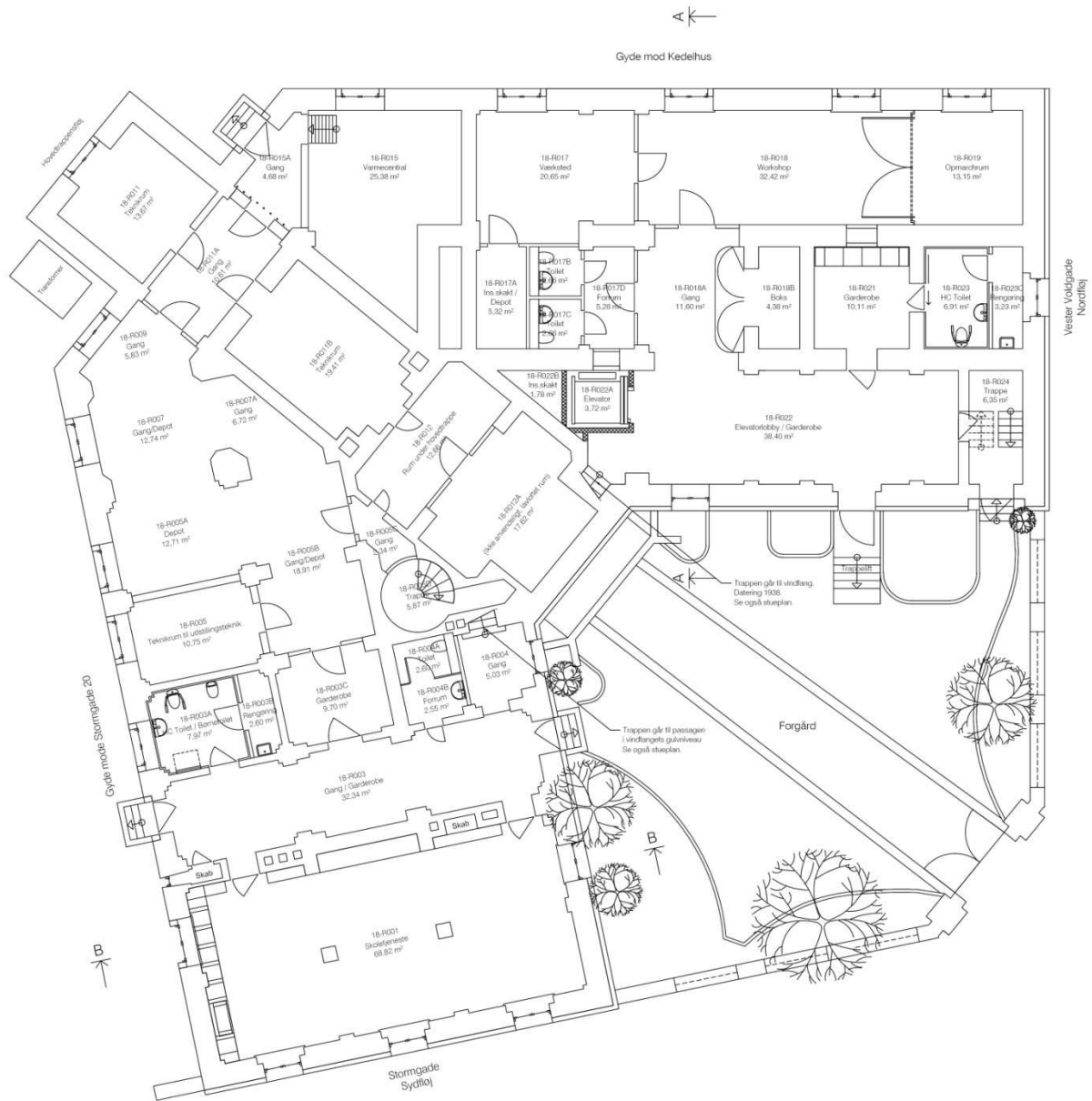
Stormgade 18. Flow i bygningen.



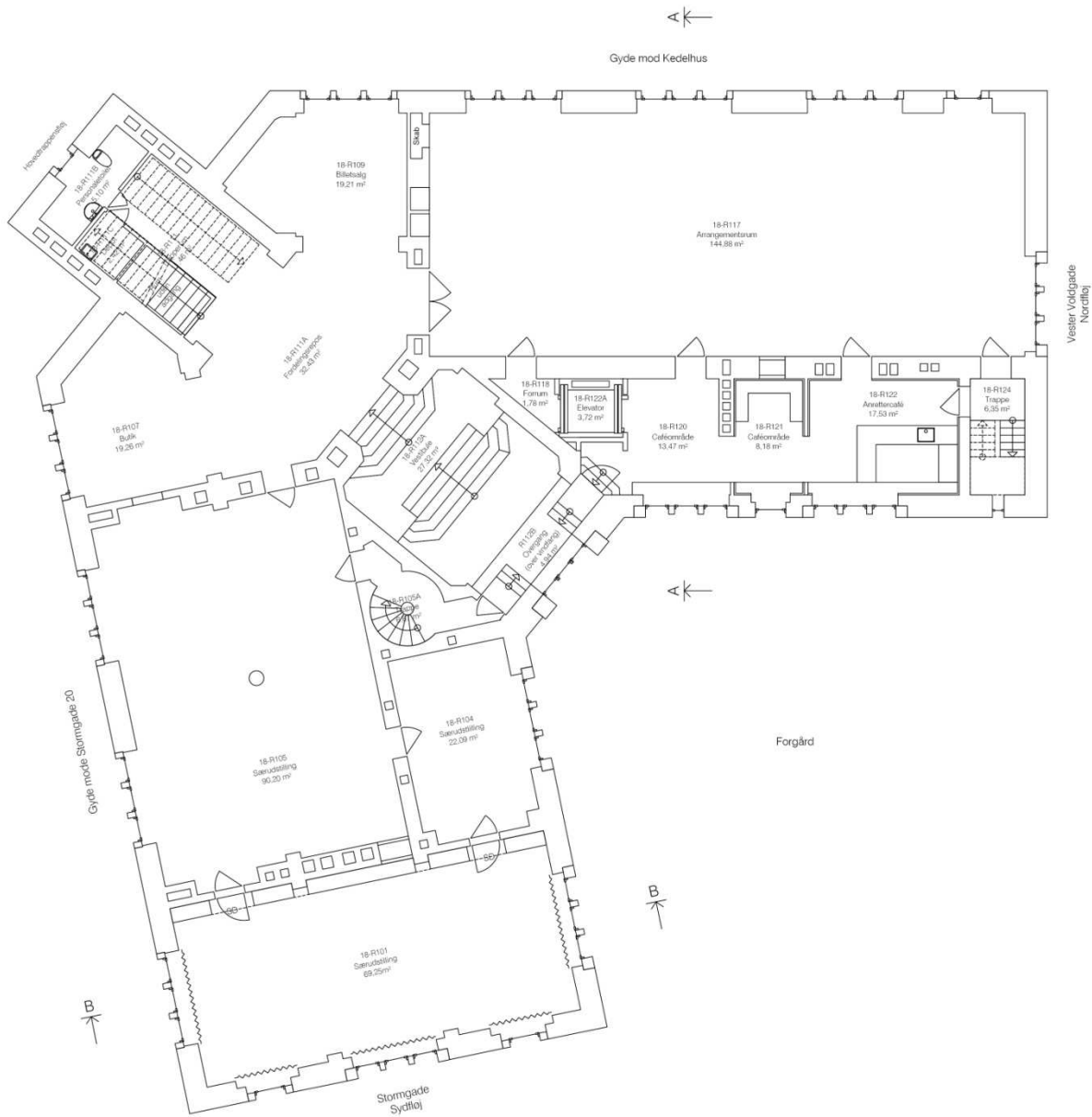
Stormgade 18. Vestibule.



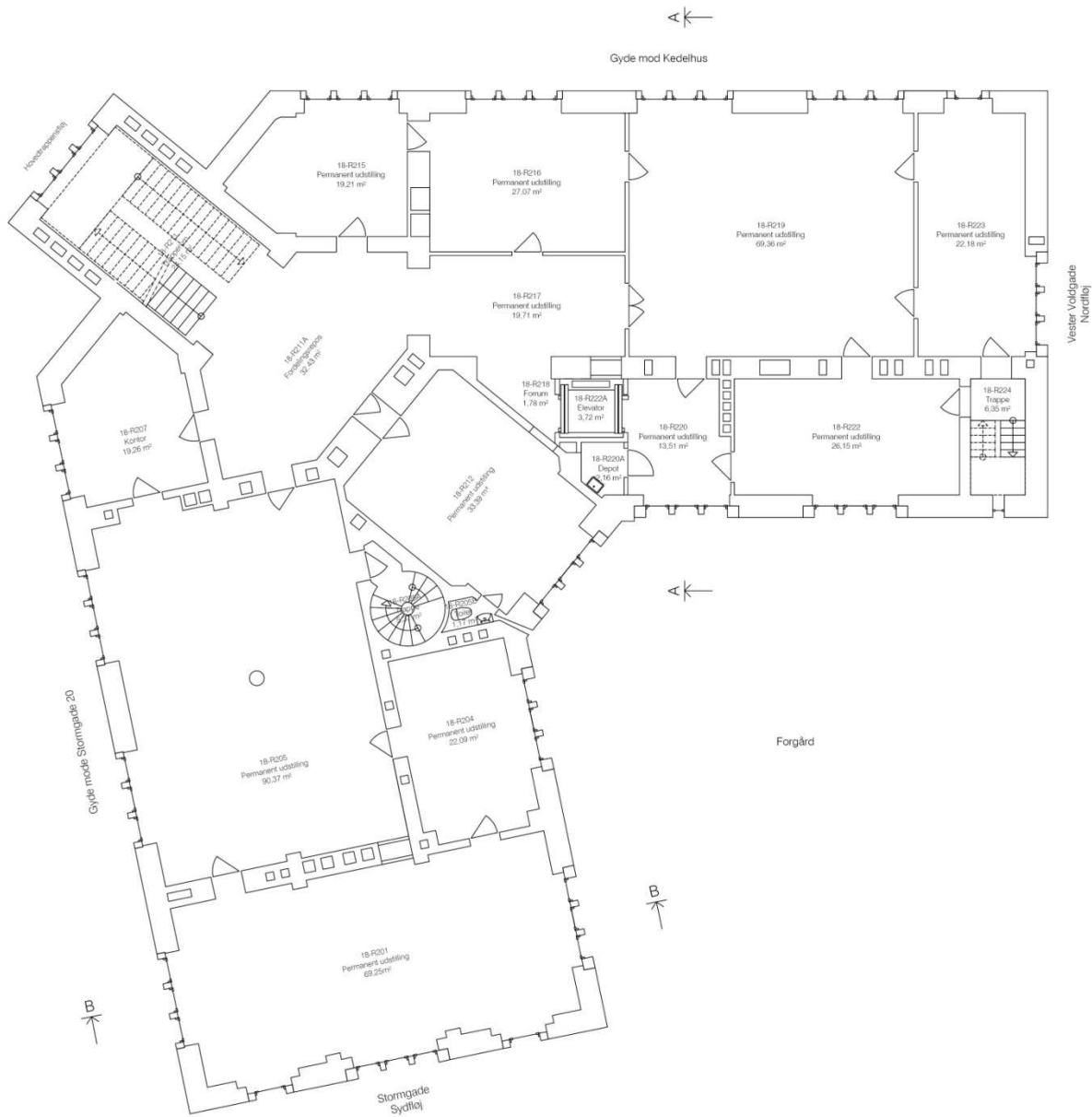
Stormgade 18. Trapperum.



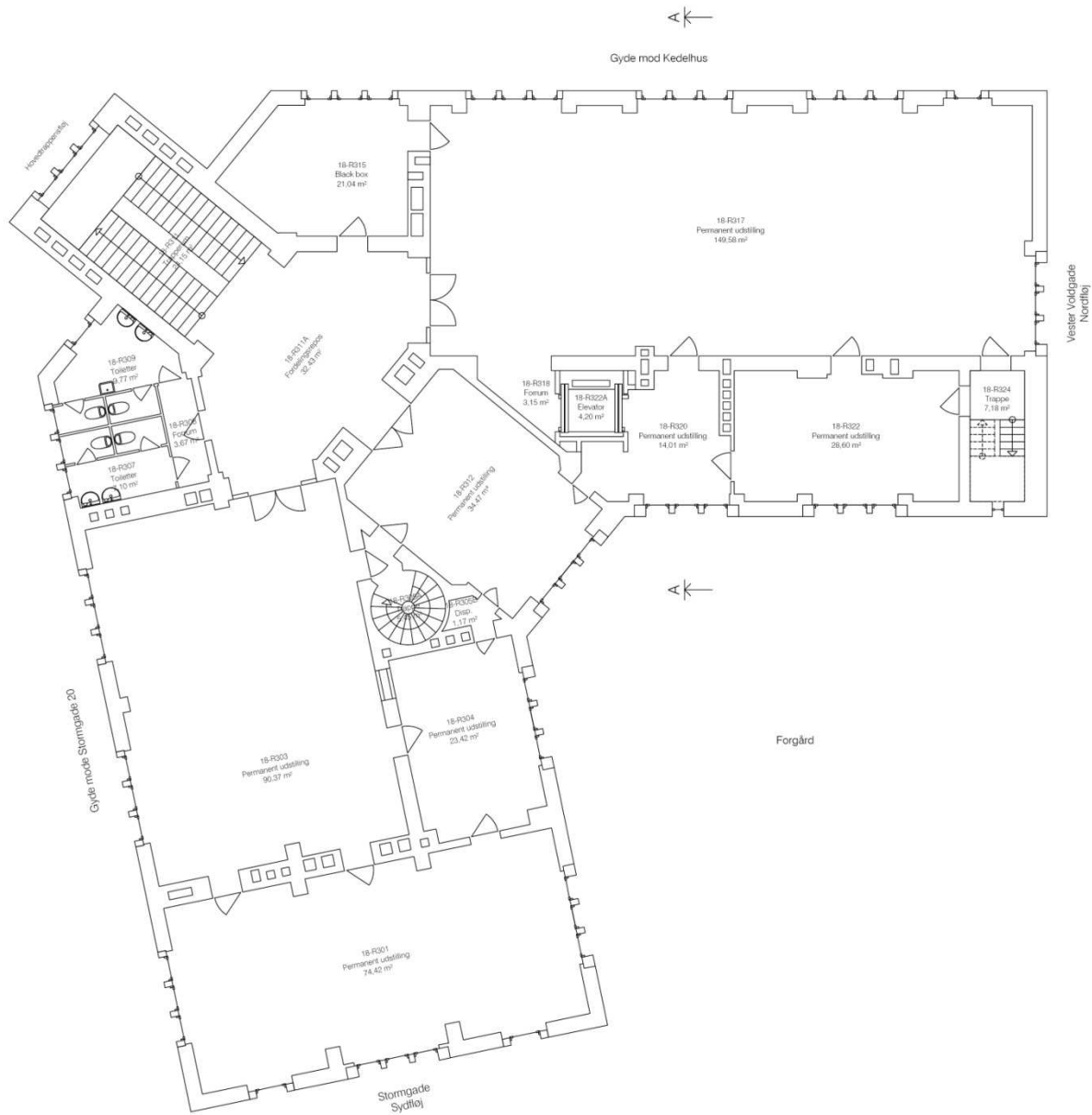
Stormgade 18. Kælderetagen.



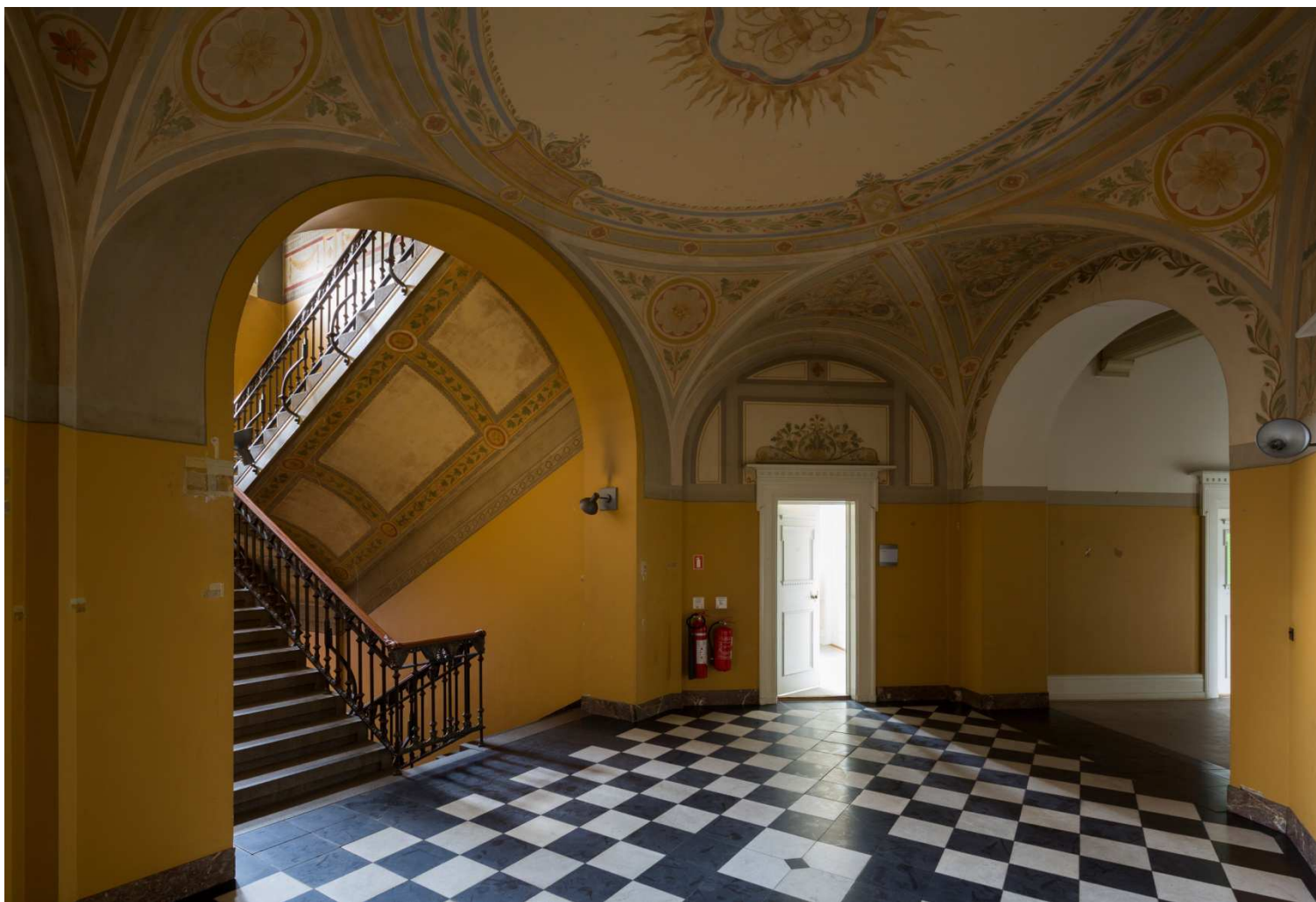
Stormgade 18. Stueetagen.



Stormgade 18. 1. sal.



Stormgade 18. 2. sal.



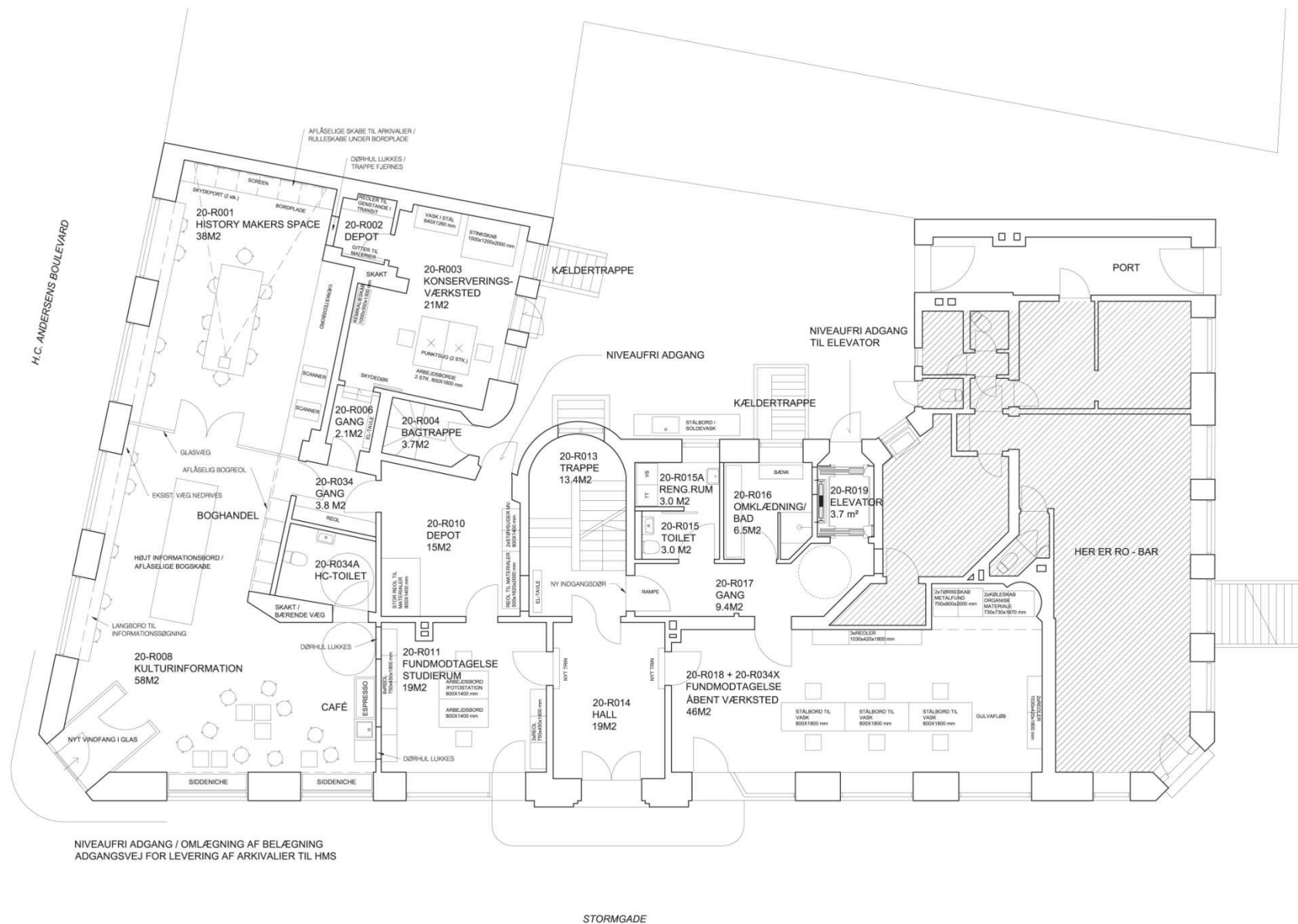
Stormgade18. Fordelingsgang på 1. sal.



Stormgade 20. View mod H.C. Andersens Boulevard.

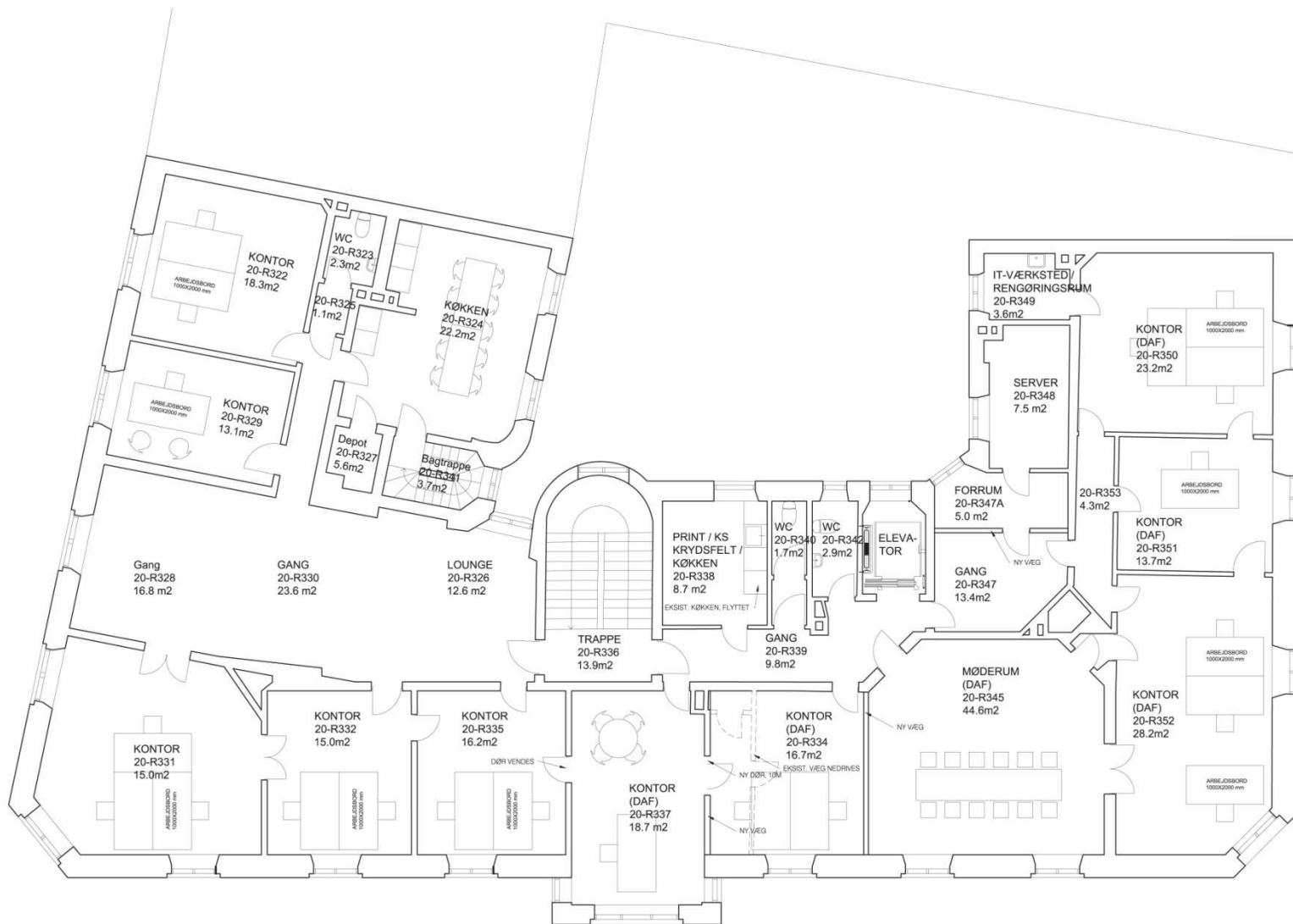


Stormgade 20. 5. sal. Kantine, mødelokaler og kontorer.

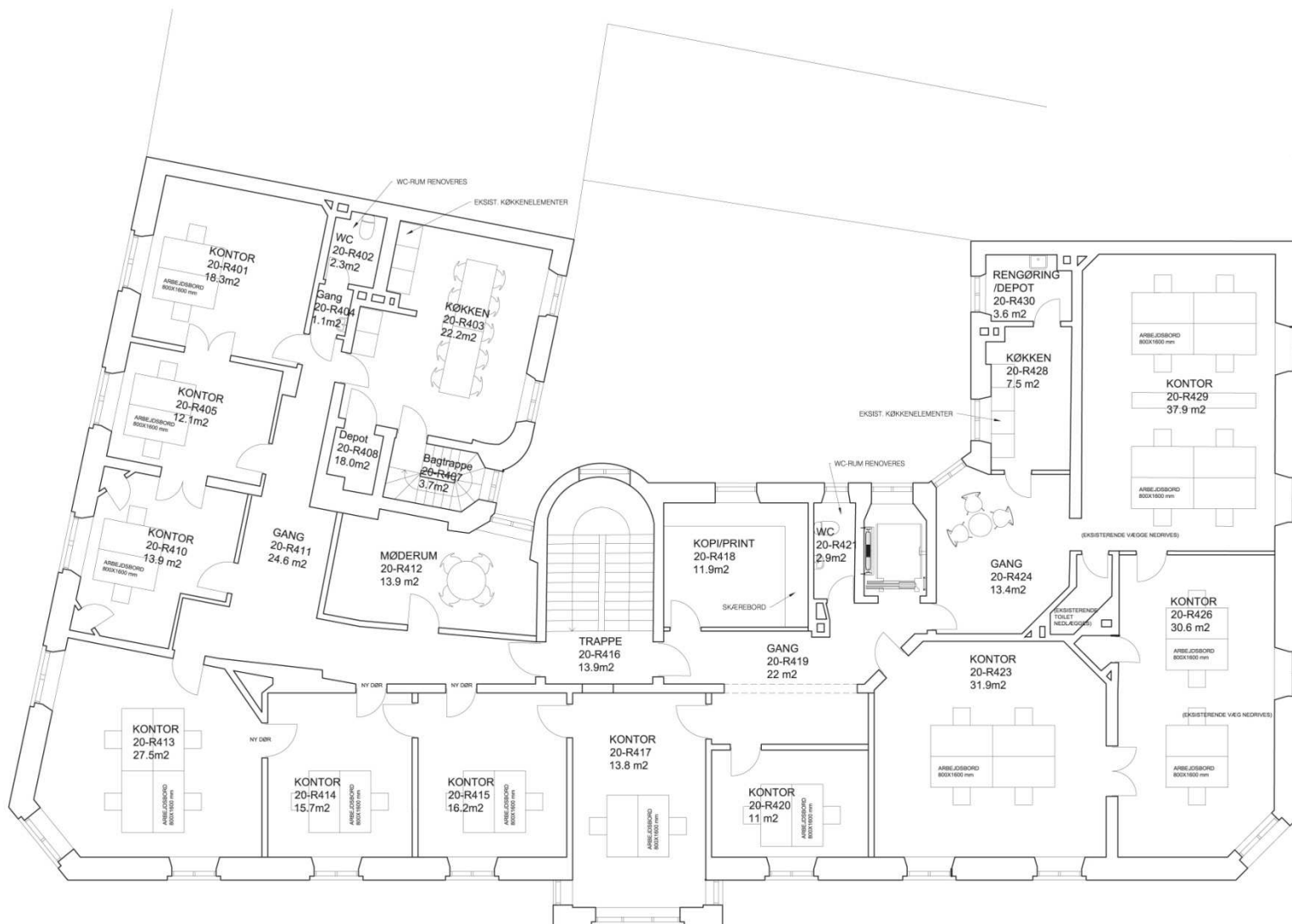


Stormgade 20. Stueetage.

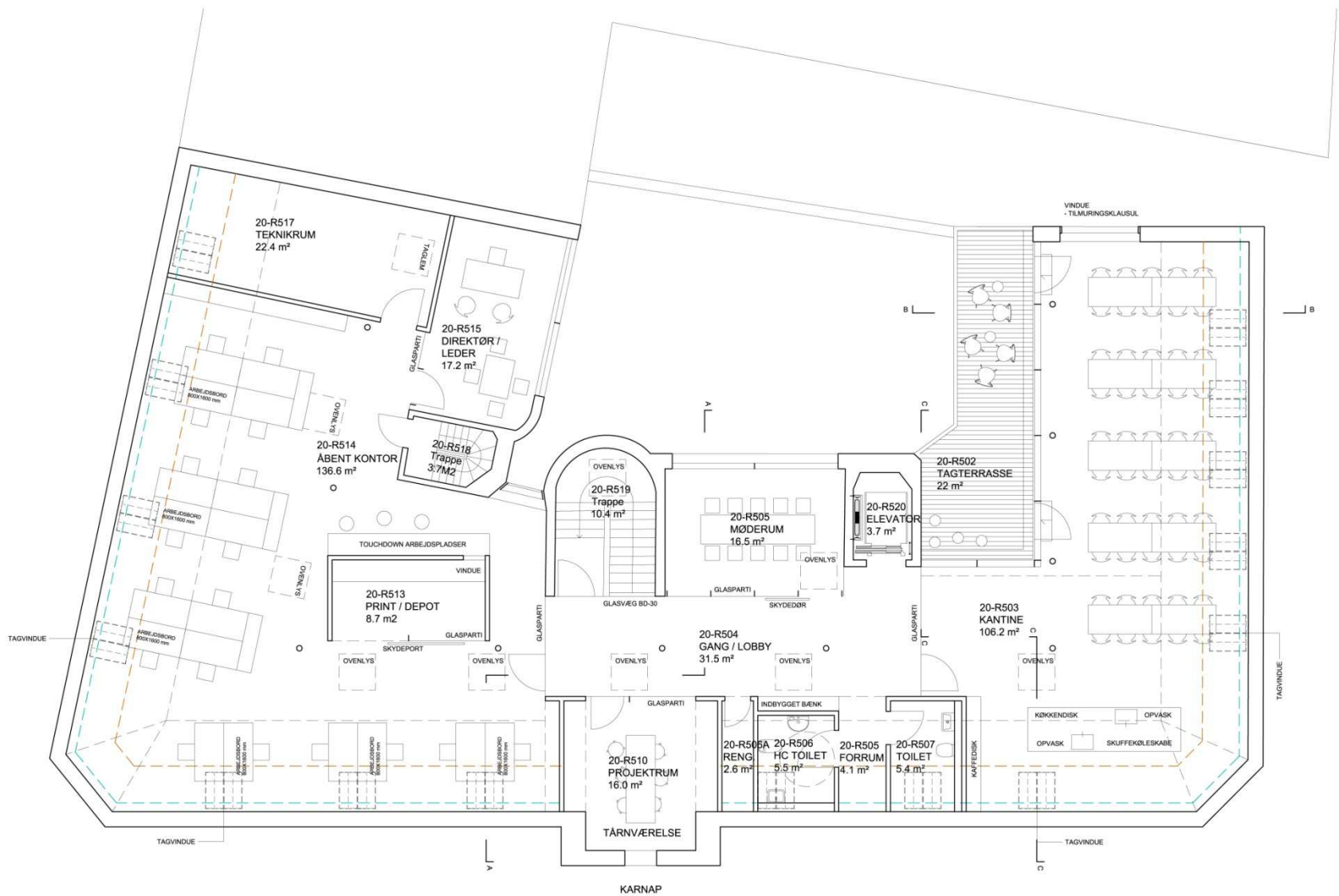
Det bemærkes, at inventar i Kulturinformation og History Makers Space ikke er indeholdt i projektet.



Stormgade 20. 3. sal.



Stormgade 20. 4. sal.



Stormgade 20. 5. sal.