



26-11-2013

Sagsnr.
2010-131995Dokumentnr.
2010-131995-8**Til BUU****Notat vedr. skoleindskrivningen og privatskolefrekvensen i København 2013**

På baggrund af indskrivningstallene fra 5. september udarbejder forvaltningen årligt et notat om status for skolevalg for elever i Københavns Kommune. De samlede dataark er vedlagt som bilag.

Overordnet kan det oplyses, at der i 2013 er indskrevet 4.366 elever i 181 0.-klasser med en gennemsnitlig klassekvotient på 24,1. Til sammenligning blev der sidste år indskrevet 4.113 elever i 168 0.-klasser med en gennemsnitlig klassekvotient på 24,5.

Nedenstående oversigt viser antallet af klasser dannet i området sammenlignet med forvaltningens prognose i forbindelse med sidste års indstilling om skolernes maksimale kapacitet (BUU 16. januar 2013):

Område	Prognose 2013	Indskrivning 2013/14
Indre By	13	13
Østerbro	23	21
Nørrebro	16	17
Vesterbro /Kgs. Enghave	21	21
Valby	16	16
Vanløse – Brønshøj/Husum	36	38
Bispebjerg	16	16
Amager	40	39
København i alt	181	181

Nedenstående oversigt viser de overordnede ændringer i privatskolefrekvensen på by- og områdeniveau i forhold til sidste år:

Område	2012/13	2013/14	Ændring i %
Indre By	32,2 %	32,1 %	-0,1%
Østerbro	30,0 %	28,2 %	-1,8%
Nørrebro	34,7 %	36,3 %	1,6%
Vesterbro/Kgs. Enghave	23,6 %	23,4 %	-0,2%
Valby	23,6 %	23,2 %	-0,4%
Vanløse- Brønshøj-Husum	16,6 %	16,1 %	-0,5%
Bispebjerg	25,2 %	26,3 %	1,1%
Amager	20,9 %	20,7 %	-0,2%
København i alt	24,6 %	24,1 %	-0,5%

Tallene for fordelingen af elevers skolevalg i Københavns Kommune i skoleåret 2013/14 viser, at 76 % af de københavnske børn i 0. – 2. klassetrin går i en kommunal skole, mens 24 % går i privatskole. 51 % af børnene går i deres grunddistriktsskole, mens 24 % går i en anden offentlig skole.

Der kan for tredje år i træk noteres et svagt fald i den samlede privatskolefrekvens fra sidste år. Frekvensen er faldet med 0,5 % fra 24,6 % til 24,1 %. Andelen har de seneste 10 år ligget stabilt mellem 24 og 26 %. Faldet i privatskolefrekvensen skyldes, at mens folkeskolerne har optaget flere elever, har privatskolerne ikke øget optaget af elever nævneværdigt. Det antages, at der kommer flere nye privatskoler i løbet de næstkommende år, bl.a. i Nordhavn hvor der åbnes en ny privatskole. Da udbygningen af skolekapaciteten i København sker i både kommunalt og privat regi, er forvaltningens vurdering fortsat, at privatskolefrekvensen forbliver på et stabilt niveau.

Privatskolesøgningen er stadig størst i Indre By, på Østerbro og på Nørrebro, der også er de bydele, hvor de fleste privatskoler ligger. På Østerbro falder andelen, mens Indre By er uændret og andelen er steget på Nørrebro og Bispebjerg.

Oversigt over skolevalg for elever bosat i Københavns Kommune (børnehaveklasse til og med 2. Klassetrin)

G = Grunddistriktsskolen, A = Anden offentlig skole, P = Privatskole

Distrikt / Skole	2004/05			2005/06			2006/07			2007/08			2008/09			2009/10			2010/11			2011/12			2012/13			2013/14		
	G	A	P	G	A	P	G	A	P	G	A	P	G	A	P	G	A	P	G	A	P	G	A	P	G	A	P			
Distrikt 1: Indre By																														
Den Classenske Legatskole	31%	22%	46%	41%	16%	43%	43%	16%	41%	44%	15%	40%	35%	17%	48%	35%	19%	46%	33%	20%	47%	43%	16%	41%	41%	17%	42%	41%	22%	38%
Nyboder Skole	56%	13%	32%	38%	27%	35%	42%	27%	32%	47%	23%	30%	42%	23%	36%	42%	22%	36%	44%	25%	31%	52%	13%	34%	52%	15%	33%	53%	13%	35%
Sølvgades Skole	36%	20%	43%	47%	14%	39%	47%	14%	39%	53%	12%	35%	49%	16%	35%	47%	22%	31%	49%	22%	30%	42%	21%	36%	44%	19%	36%	47%	13%	40%
Christianshavns Skole	72%	3%	25%	69%	4%	26%	68%	6%	26%	71%	6%	24%	70%	5%	25%	55%	11%	34%	71%	5%	24%	69%	8%	23%	71%	8%	22%	73%	7%	20%
Øster Farimagsgades Skole	57%	9%	34%	65%	3%	32%	67%	5%	28%	63%	4%	33%	61%	7%	32%	65%	8%	26%	60%	7%	34%	51%	16%	33%	55%	14%	31%	55%	14%	31%
Total	52%	13%	35%	52%	13%	35%	54%	13%	33%	55%	12%	32%	51%	14%	35%	49%	16%	35%	51%	16%	33%	52%	15%	33%	54%	14%	32%	54%	14%	32%
Distrikt 2: Østerbro																														
Randersgades Skole	39%	36%	25%	43%	35%	22%	46%	32%	22%	50%	26%	24%	60%	17%	23%	35%	40%	25%	40%	32%	27%	37%	33%	30%	38%	29%	32%	39%	30%	31%
Vibenshus Skole	50%	23%	27%	54%	19%	27%	59%	18%	24%	65%	18%	18%	54%	26%	20%	48%	28%	23%	45%	31%	24%	39%	32%	29%	40%	32%	28%	38%	33%	29%
Sortedamsskolen	53%	23%	24%	54%	19%	27%	60%	16%	25%	58%	18%	24%	60%	17%	23%	56%	19%	25%	51%	23%	26%	54%	18%	29%	52%	17%	31%	58%	10%	32%
Langelinieskolen	64%	11%	25%	69%	13%	18%	68%	11%	21%	67%	14%	19%	68%	12%	20%	62%	13%	25%	65%	10%	25%	42%	29%	28%	51%	23%	26%	55%	19%	26%
Heibergskolen	60%	16%	25%	66%	11%	23%	71%	9%	20%	67%	13%	19%	75%	10%	15%	75%	14%	11%	75%	12%	13%	77%	9%	14%	77%	14%	8%	87%	6%	8%
Strandvejsskolen	55%	15%	30%	58%	13%	29%	30%	43%	26%	42%	29%	30%	43%	24%	34%	45%	23%	32%	45%	19%	36%	46%	19%	35%	47%	20%	34%	37%	33%	30%
Nørre Fælled Skole ¹⁾	33%	37%	31%	27%	39%	34%	22%	44%	34%	22%	45%	33%	21%	45%	34%	19%	44%	37%	13%	46%	41%	16%	46%	38%						
Kildevældsskolen	55%	20%	25%	51%	20%	29%	36%	35%	29%	37%	35%	27%	38%	34%	28%	41%	28%	30%	35%	32%	33%	36%	34%	30%	38%	32%	29%	46%	25%	29%
Skolen på Standboulevarden																														
Total	49%	25%	27%	50%	23%	27%	44%	30%	26%	47%	28%	26%	43%	30%	26%	43%	29%	28%	42%	28%	30%	40%	30%	31%	42%	28%	30%	45%	27%	28%
Distrikt 3: Nørrebro																														
Blågård Skole ²⁾													33%	29%	38%	36%	22%	42%	33%	19%	48%	31%	24%	45%	29%	24%	47%	27%	26%	47%
Guldberg Skole ³⁾				33%	22%	45%	39%	19%	42%	45%	18%	37%	45%	15%	40%	47%	12%	41%	49%	13%	38%	56%	13%	31%	61%	12%	27%	66%	11%	23%
Nørrebro Park Skole ³⁾													48%	19%	33%	42%	29%	29%	39%	30%	31%	46%	24%	30%	51%	18%	31%	54%	16%	31%
Nørre Fælled Skole ¹⁾																									15%	45%	39%	21%	43%	37%
Hillerødsgades Skole	37%	29%	34%	29%	32%	40%	23%	41%	37%	20%	43%	37%	22%	40%	38%	19%	41%	40%	19%	36%	44%	19%	36%	44%	35%	34%	31%	33%	29%	38%
Rådmandsgades Skole	43%	20%	37%	42%	21%	38%	37%	28%	35%	38%	28%	34%	39%	30%	32%	39%	27%	34%	41%	29%	30%	39%	25%	35%	35%	34%	31%	33%	29%	38%
Total	34%	24%	42%	34%	24%	41%	35%	27%	38%	36%	27%	36%	38%	26%	36%	39%	23%	38%	39%	23%	38%	42%	22%	36%	44%	21%	35%	39%	25%	36%

1) Nørre Fælled Skole (tidligere Tagensbo Skole) skiftede områdetilknytning fra Østerbro til Nørrebro i 2012

2) Blågårdsskolen og Hellig Kors Skole er sammenlagt til Blågård Skole i 2008/09

3) Sjællandsgades Skole og Stevngades Skole er omdannet til Guldberg Skole i 2005/06

4) Jagtvejens Skole og Havremarkens Skole er lagt sammen til Nørrebro Park Skole i 2008/09

Oversigt over skolevalg for elever bosat i Københavns Kommune (børnehaveklasse til og med 2. Klassetrin)

G = Grunddistriktsskolen, A = Anden offentlig skole, P = Privatskole

Distrikt / Skole	2004/05			2005/06			2006/07			2007/08			2008/09			2009/10			2010/11			2011/12			2012/13			2013/14		
	G	A	P	G	A	P	G	A	P	G	A	P	G	A	P	G	A	P	G	A	P	G	A	P	G	A	P			
Distrikt 4:																														
Vesterbro/Kgs. Enghave																														
Vesterbro Ny Skole	62%	20%	18%	55%	27%	18%	47%	31%	22%	52%	25%	24%	51%	23%	26%	49%	29%	22%	46%	31%	23%	43%	34%	23%	49%	28%	23%	57%	19%	24%
Tove Ditlevsens Skole ⁵⁾													67%	13%	20%	51%	29%	20%	54%	25%	21%	44%	37%	19%	47%	31%	22%	58%	23%	20%
Oehlenschlägersgades Skole	45%	27%	27%	42%	34%	24%	54%	28%	18%	38%	44%	18%	56%	25%	19%	61%	21%	18%	60%	23%	17%	64%	20%	16%	64%	16%	20%	66%	12%	22%
Gasværksvejens Skole							18%	56%	25%	57%	23%	19%	54%	27%	18%	59%	25%	16%	62%	17%	22%	60%	16%	23%	73%	11%	16%	76%	9%	15%
Bavnehøj Skole	48%	32%	20%	41%	30%	29%	42%	30%	28%	39%	31%	30%	37%	37%	27%	35%	32%	33%	43%	30%	27%	32%	39%	29%	45%	18%	37%	41%	20%	40%
Ellebørg Skole	60%	22%	18%	58%	19%	23%	55%	21%	24%	49%	25%	25%	46%	30%	25%	50%	26%	24%	45%	28%	27%	43%	32%	26%	44%	30%	26%	43%	29%	27%
Skolen i Sydhavn																									44%	36%	20%	61%	24%	15%
Total	55%	24%	21%	49%	27%	24%	44%	32%	24%	48%	29%	23%	51%	26%	22%	50%	27%	23%	51%	26%	23%	45%	32%	23%	51%	26%	24%	56%	20%	23%
Distrikt 5: Valby																														
Hanssted Skole	85%	7%	8%	84%	5%	11%	86%	4%	10%	84%	2%	13%	67%	17%	15%	70%	16%	13%	69%	16%	15%	69%	16%	15%	73%	14%	13%	78%	11%	11%
Kirsebærhavens Skole	81%	7%	12%	81%	8%	11%	77%	10%	13%	77%	10%	14%	64%	17%	19%	67%	17%	16%	58%	20%	21%	60%	18%	23%	58%	19%	23%	64%	14%	22%
Lykkebo Skole	69%	17%	14%	68%	18%	14%	56%	23%	21%	51%	21%	28%	46%	28%	26%	49%	28%	23%	49%	26%	25%	49%	25%	26%	47%	25%	28%	49%	21%	31%
Valby Skole	63%	10%	26%	61%	10%	28%	66%	9%	25%	62%	13%	25%	64%	13%	23%	58%	16%	26%	63%	11%	26%	62%	14%	24%	68%	14%	18%	68%	12%	20%
Vigerslev Allé Skole	55%	14%	30%	49%	14%	37%	47%	15%	38%	48%	20%	32%	47%	23%	30%	50%	22%	29%	43%	26%	31%	45%	25%	30%	53%	17%	30%	55%	16%	29%
Alholm Skole	55%	19%	25%	48%	22%	29%	40%	27%	33%	35%	29%	36%	31%	39%	30%	32%	40%	28%	41%	33%	26%	47%	25%	28%	47%	27%	26%	52%	25%	23%
Total	67%	13%	20%	63%	14%	23%	59%	16%	25%	57%	17%	26%	52%	24%	24%	53%	24%	23%	53%	22%	24%	54%	21%	25%	57%	19%	24%	60%	16%	23%
Distrikt 6:																														
Vanløse - Brønshøj/Husum																														
Hyltebjerg Skole	77%	14%	9%	77%	15%	8%	77%	14%	10%	77%	15%	8%	75%	15%	10%	77%	15%	9%	78%	14%	8%	80%	10%	10%	77%	10%	13%	82%	6%	12%
Katrinedal Skole	80%	9%	11%	80%	11%	9%	78%	13%	9%	82%	11%	7%	78%	10%	12%	75%	15%	9%	77%	14%	10%	81%	11%	9%	82%	9%	9%	83%	7%	10%
Kirkebjerg Skole	73%	16%	12%	73%	16%	11%	71%	17%	12%	71%	19%	10%	68%	25%	7%	68%	25%	7%	71%	21%	8%	72%	19%	9%	76%	14%	10%	77%	15%	8%
Rødkiide Skole	80%	7%	13%	85%	6%	9%	81%	6%	14%	75%	12%	13%	56%	26%	18%	58%	28%	14%	55%	28%	17%	54%	31%	15%	53%	28%	18%	66%	18%	16%
Vanløse Skole	54%	32%	14%	49%	35%	16%	45%	37%	18%	44%	36%	20%	41%	45%	15%	42%	42%	16%	46%	36%	18%	57%	29%	14%	57%	31%	12%	62%	26%	12%
Bellahøj Skole	46%	38%	16%	34%	46%	20%	30%	50%	20%	38%	43%	19%	44%	37%	20%	48%	33%	18%	49%	32%	19%	60%	21%	19%	63%	17%	19%	68%	13%	18%
Brønshøj Skole	76%	8%	16%	71%	10%	19%	68%	15%	17%	73%	10%	17%	70%	14%	16%	60%	19%	21%	57%	26%	17%	46%	32%	22%	54%	26%	20%	63%	20%	17%
Husum Skole	68%	18%	14%	68%	22%	11%	66%	21%	12%	63%	25%	12%	40%	41%	18%	45%	39%	16%	47%	34%	20%	48%	33%	18%	52%	32%	16%	60%	23%	17%
Korsager Skole	68%	19%	13%	67%	19%	15%	64%	22%	14%	64%	19%	17%	58%	25%	17%	58%	25%	17%	56%	26%	18%	58%	23%	18%	58%	25%	17%	64%	17%	19%
Tingbjerg Skole	57%	21%	22%	53%	25%	22%	44%	35%	22%	47%	35%	18%	44%	39%	17%	38%	39%	23%	34%	40%	26%	36%	38%	26%	34%	40%	25%	37%	37%	25%
Voldparken Skole ⁶⁾	47%	38%	15%	42%	41%	17%	34%	49%	17%	20%	61%	20%																		
Total	64%	21%	15%	61%	24%	15%	57%	28%	16%	56%	29%	15%	54%	30%	16%	55%	29%	16%	55%	28%	17%	58%	26%	17%	59%	25%	17%	64%	19%	16%

5) Enghave Plads Skole og Mathæusgades Skole er lagt sammen til Tove Ditlevsens Skole i 2008/09

6) Voldparkens Skole er lukket august 2008

Oversigt over skolevalg for elever bosat i Københavns Kommune (børnehaveklasse til og med 2. Klasse trin)

G = Grunddistriktsskolen, A = Anden offentlig skole, P = Privatskole

Distrikt / Skole	2004/05			2005/06			2006/07			2007/08			2008/09			2009/10			2010/11			2011/12			2012/13			2013/14		
	G	A	P	G	A	P	G	A	P	G	A	P	G	A	P	G	A	P	G	A	P	G	A	P	G	A	P			
Distrikt 7: Bispebjerg																														
Grøndalsvænget Skole	52%	28%	20%	55%	26%	19%	52%	25%	22%	53%	26%	22%	43%	35%	21%	46%	33%	21%	48%	29%	23%	47%	32%	20%	45%	32%	23%	54%	24%	22%
Tagensbo Skole ⁸⁾													33%	38%	29%	29%	40%	31%	28%	40%	33%	27%	37%	36%	31%	34%	35%	39%	25%	36%
Holbergskolen	84%	4%	13%	80%	6%	14%	64%	20%	16%	65%	20%	14%	63%	20%	17%	65%	16%	18%	69%	13%	18%	72%	14%	15%	72%	14%	14%	74%	12%	15%
Lundehusskolen	59%	16%	26%	51%	16%	33%	51%	16%	33%	54%	15%	31%	55%	19%	26%	55%	14%	31%	50%	15%	35%	52%	13%	36%	52%	17%	31%	53%	10%	36%
Utterslev Skole	79%	10%	11%	78%	10%	12%	82%	9%	9%	83%	11%	7%	82%	8%	10%	80%	10%	10%	84%	9%	7%	67%	18%	15%	70%	18%	12%	73%	15%	12%
Total	53%	24%	22%	52%	24%	25%	48%	26%	25%	49%	27%	24%	49%	28%	23%	49%	26%	25%	48%	25%	27%	50%	24%	26%	51%	24%	25%	56%	17%	26%
Distrikt 8: Amager																														
Sønderbro Skole	59%	19%	23%	56%	15%	29%	52%	19%	30%	45%	24%	32%	41%	28%	31%	41%	29%	30%	44%	29%	27%	44%	30%	26%	42%	33%	25%	51%	28%	22%
Sundpark Skole	52%	24%	23%	51%	24%	24%	50%	25%	24%	47%	27%	26%																		
Østrigsgades Skole	54%	23%	23%	52%	23%	25%	49%	23%	28%	49%	24%	27%																		
Lergravsparkens Skole ⁸⁾													55%	20%	25%	50%	21%	29%	52%	18%	30%	51%	20%	29%	46%	30%	24%	51%	22%	26%
Gerbrandskolen	75%	10%	15%	75%	10%	15%	71%	11%	18%	66%	10%	23%	62%	17%	21%	62%	15%	23%	67%	14%	19%	71%	13%	16%	54%	27%	19%	64%	18%	18%
Skolen Ved Sundet	77%	8%	15%	79%	6%	15%	80%	7%	13%	79%	6%	15%	80%	5%	15%	76%	7%	17%	75%	6%	19%	77%	7%	16%	83%	3%	14%	89%	3%	9%
Sundbyøster Skole	59%	19%	23%	57%	19%	24%	49%	22%	29%	50%	28%	23%	45%	33%	23%	45%	34%	20%	47%	31%	22%	46%	29%	25%	39%	35%	27%	42%	32%	26%
Dyvekeskolen	50%	28%	22%	42%	36%	22%	37%	37%	26%	34%	42%	24%	39%	35%	26%	38%	34%	28%	36%	31%	33%	41%	25%	35%	34%	38%	29%	44%	29%	27%
Højdevangens Skole	58%	22%	20%	59%	21%	21%	57%	22%	21%	56%	24%	20%	55%	25%	20%	53%	26%	21%	52%	27%	21%	48%	31%	21%						
Peder Lykke Skole	67%	16%	18%	65%	19%	16%	64%	15%	21%	59%	20%	21%	56%	22%	22%	51%	22%	27%	46%	26%	28%	47%	24%	29%	40%	34%	26%	38%	39%	24%
Amager Fælled Skole	49%	25%	26%	40%	36%	24%	36%	40%	24%	32%	43%	24%	29%	46%	25%	31%	43%	26%	35%	40%	25%	37%	35%	28%	40%	38%	22%	45%	32%	23%
Skolen på Islands Brygge	76%	9%	15%	73%	7%	21%	86%	4%	9%	80%	10%	9%	84%	10%	6%	82%	9%	8%	84%	7%	9%	82%	10%	8%	83%	7%	10%	87%	6%	7%
Ørestad Skole 9)													25%	49%	27%	45%	35%	20%	59%	24%	17%	77%	13%	9%	79%	11%	10%			
Total	60%	19%	20%	57%	21%	22%	55%	22%	22%	52%	25%	22%	50%	28%	22%	49%	27%	24%	52%	25%	23%	54%	23%	23%	52%	27%	21%	58%	23%	20%

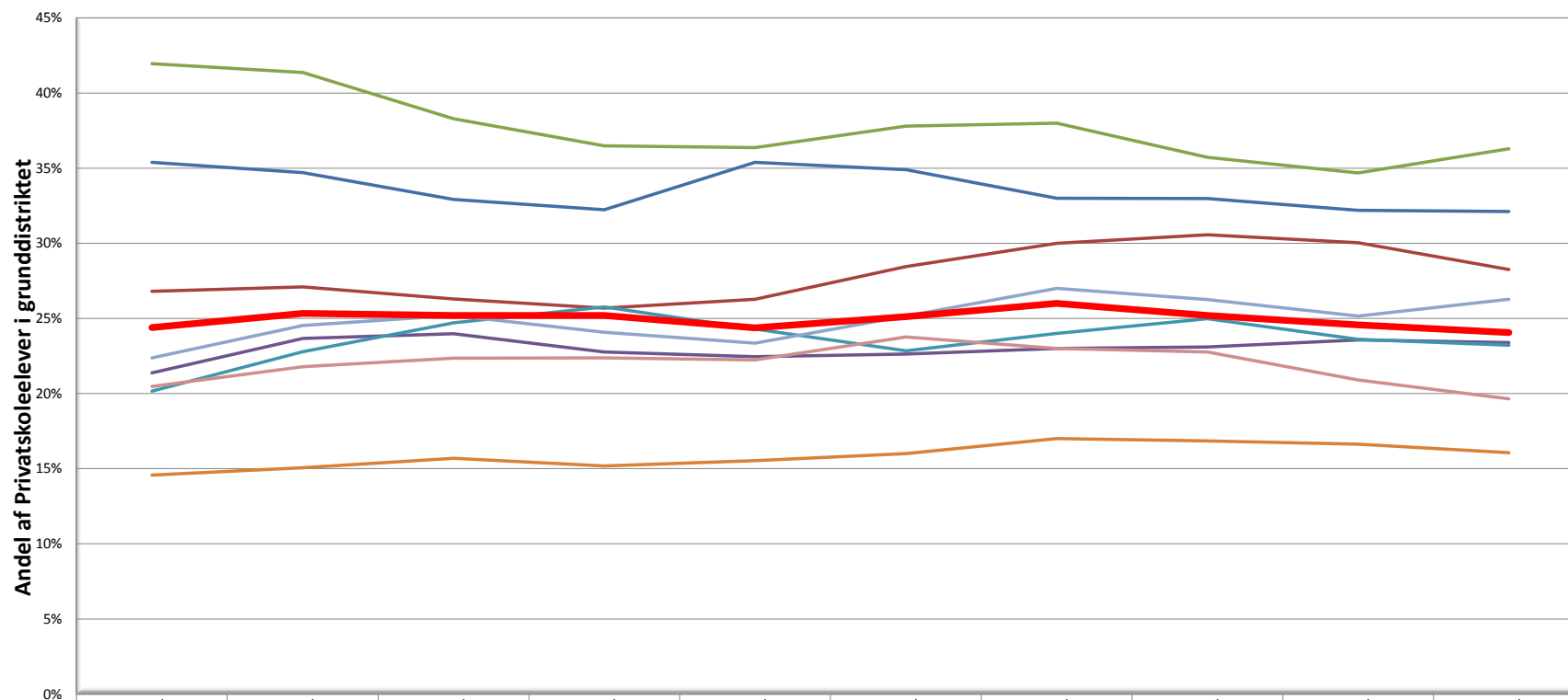
7) Frederikssundsvejens skole er lukket august 2008

8) Sundpark Skole og Østrigsgades Skole er sammenlagt til Lergravsparkens Skole i 2008/09

9) Ørestad Skole har midlertidigt til huse på Skolen på Islands Brygge

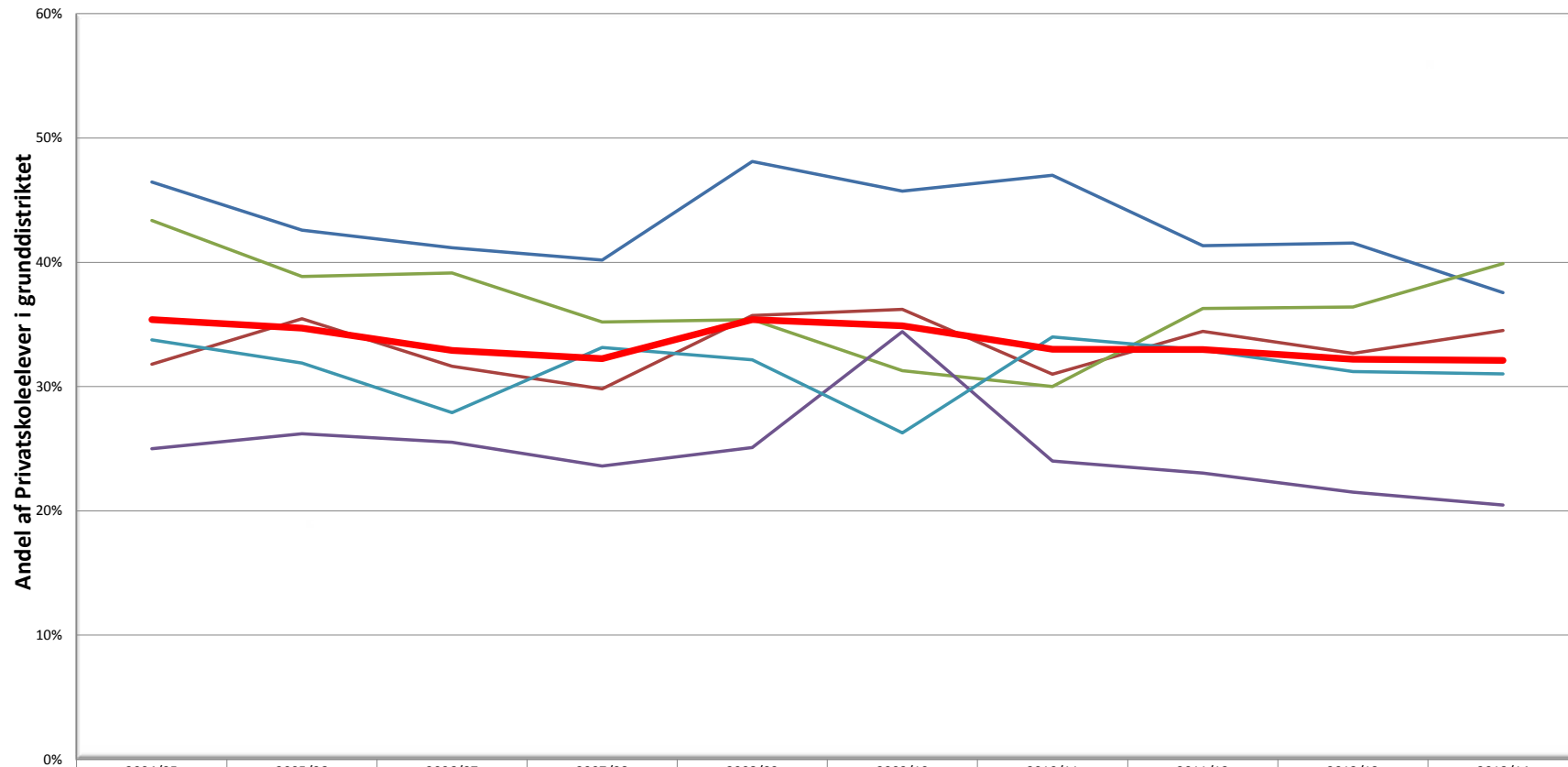
København	55%	21%	24%	53%	22%	25%	50%	25%	25%	50%	25%	25%	48%	28%	24%	48%	26%	25%	49%	25%	26%	49%	26%	25%	51%	24%	25%	54%	22%	24%
------------------	------------	------------	------------	------------	------------	------------	------------	------------	------------	------------	------------	------------	------------	------------	------------	------------	------------	------------	------------	------------	------------	------------	------------	------------	------------	------------	------------	------------	------------	------------

Udvikling i privatskolefrekvensen for de enkelte bydele



	2004/05	2005/06	2006/07	2007/08	2008/09	2009/10	2010/11	2011/12	2012/13	2013/14
Indre By	35%	35%	33%	32%	35%	35%	33%	33%	32%	32%
Østerbro	27%	27%	26%	26%	26%	28%	30%	31%	30%	28%
Nørrebro	42%	41%	38%	36%	36%	38%	38%	36%	35%	36%
Vesterbro/Kgs. Enghave	21%	24%	24%	23%	22%	23%	23%	23%	24%	23%
Valby	20%	23%	25%	26%	24%	23%	24%	25%	24%	23%
Vanløse - Brønshøj/Husum	15%	15%	16%	15%	16%	16%	17%	17%	17%	16%
Bispebjerg	22%	25%	25%	24%	23%	25%	27%	26%	25%	26%
Amager	20%	22%	22%	22%	22%	24%	23%	23%	21%	20%
København	24%	25%	25%	25%	24%	25%	26%	25%	25%	24%

Indre By

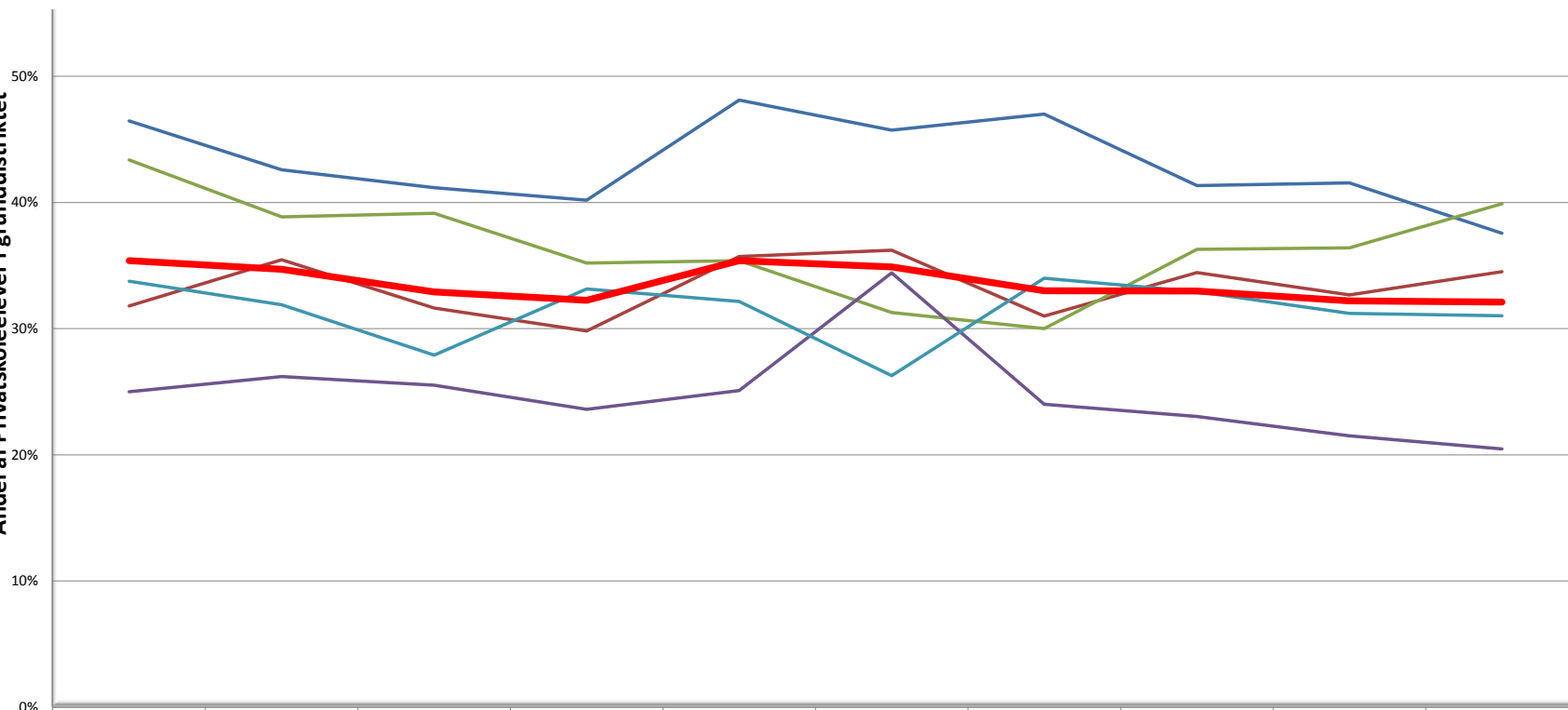


	2004/05	2005/06	2006/07	2007/08	2008/09	2009/10	2010/11	2011/12	2012/13	2013/14
Den Classenske Legatskole	46%	43%	41%	40%	48%	46%	47%	41%	42%	38%
Nyboder Skole	32%	35%	32%	30%	36%	36%	31%	34%	33%	35%
Sølvgades Skole	43%	39%	39%	35%	35%	31%	30%	36%	36%	40%
Christianshavns Skole	25%	26%	26%	24%	25%	34%	24%	23%	22%	20%
Øster Farimagsgades Skole	34%	32%	28%	33%	32%	26%	34%	33%	31%	31%
Indre By	35%	35%	33%	32%	35%	35%	33%	33%	32%	32%

Indre By

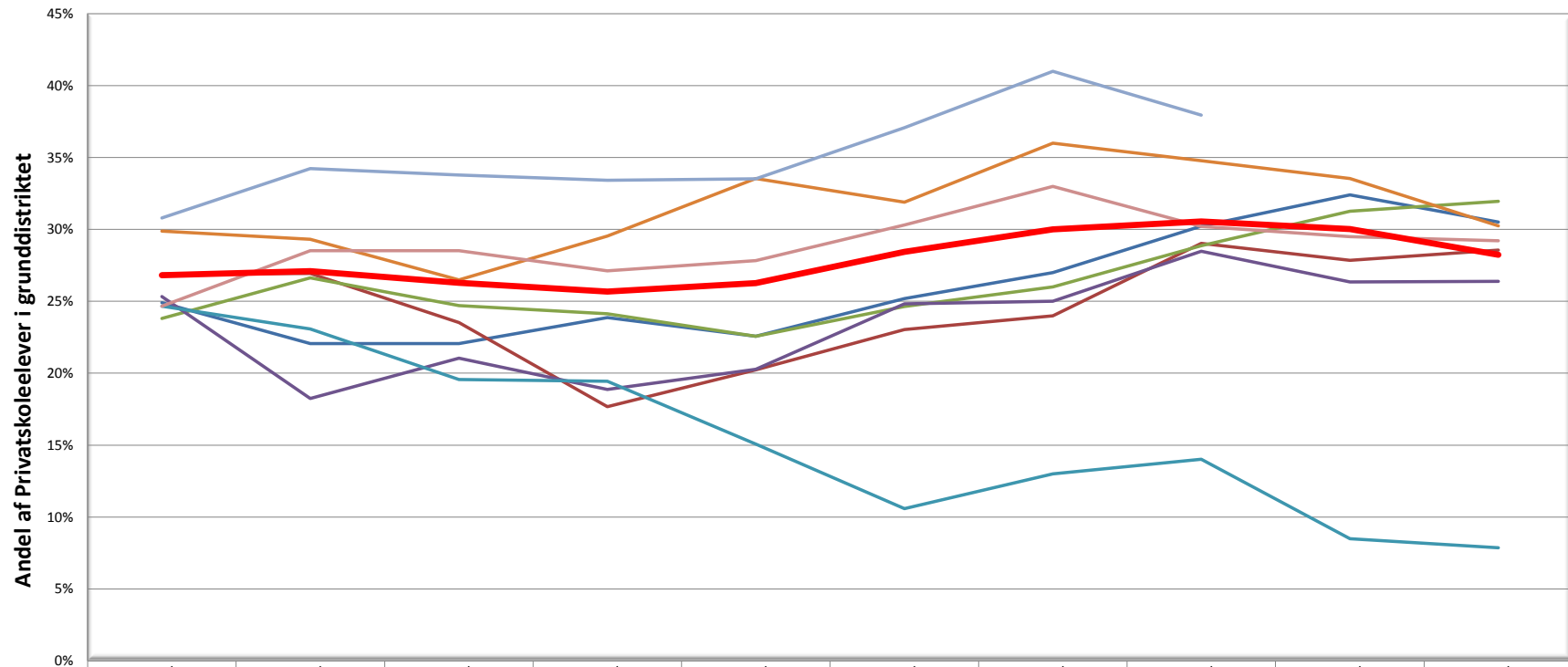


Andel af Privatskolelever i grunddistriktet



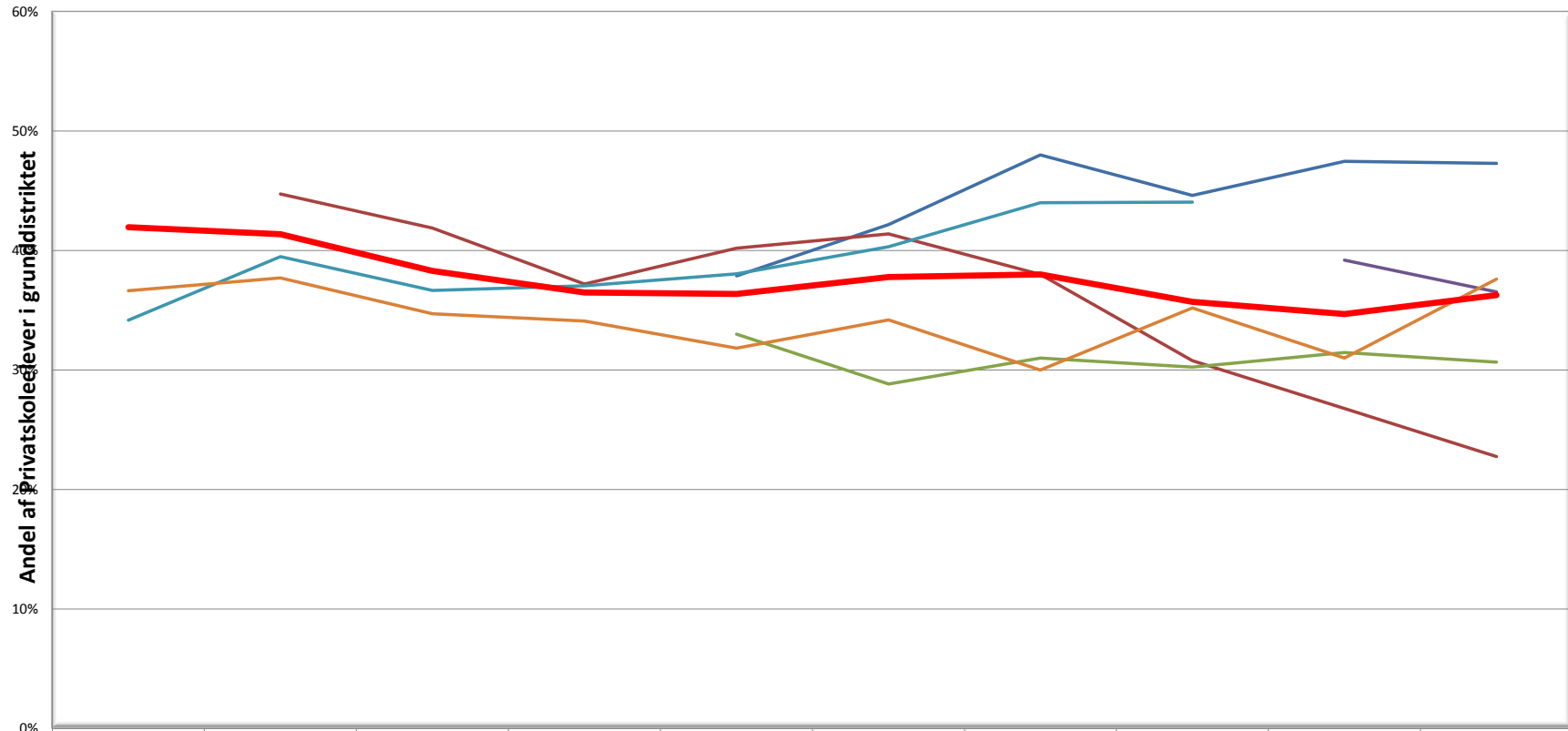
	2004/05	2005/06	2006/07	2007/08	2008/09	2009/10	2010/11	2011/12	2012/13	2013/14
Den Classenske Legatskole	46%	43%	41%	40%	48%	46%	47%	41%	42%	38%
Nyboder Skole	32%	35%	32%	30%	36%	36%	31%	34%	33%	35%
Sølvgades Skole	43%	39%	39%	35%	35%	31%	30%	36%	36%	40%
Christianshavns Skole	25%	26%	26%	24%	25%	34%	24%	23%	22%	20%
Øster Farimagsgades Skole	34%	32%	28%	33%	32%	26%	34%	33%	31%	31%
Indre By	35%	35%	33%	32%	35%	35%	33%	33%	32%	32%

Østerbro



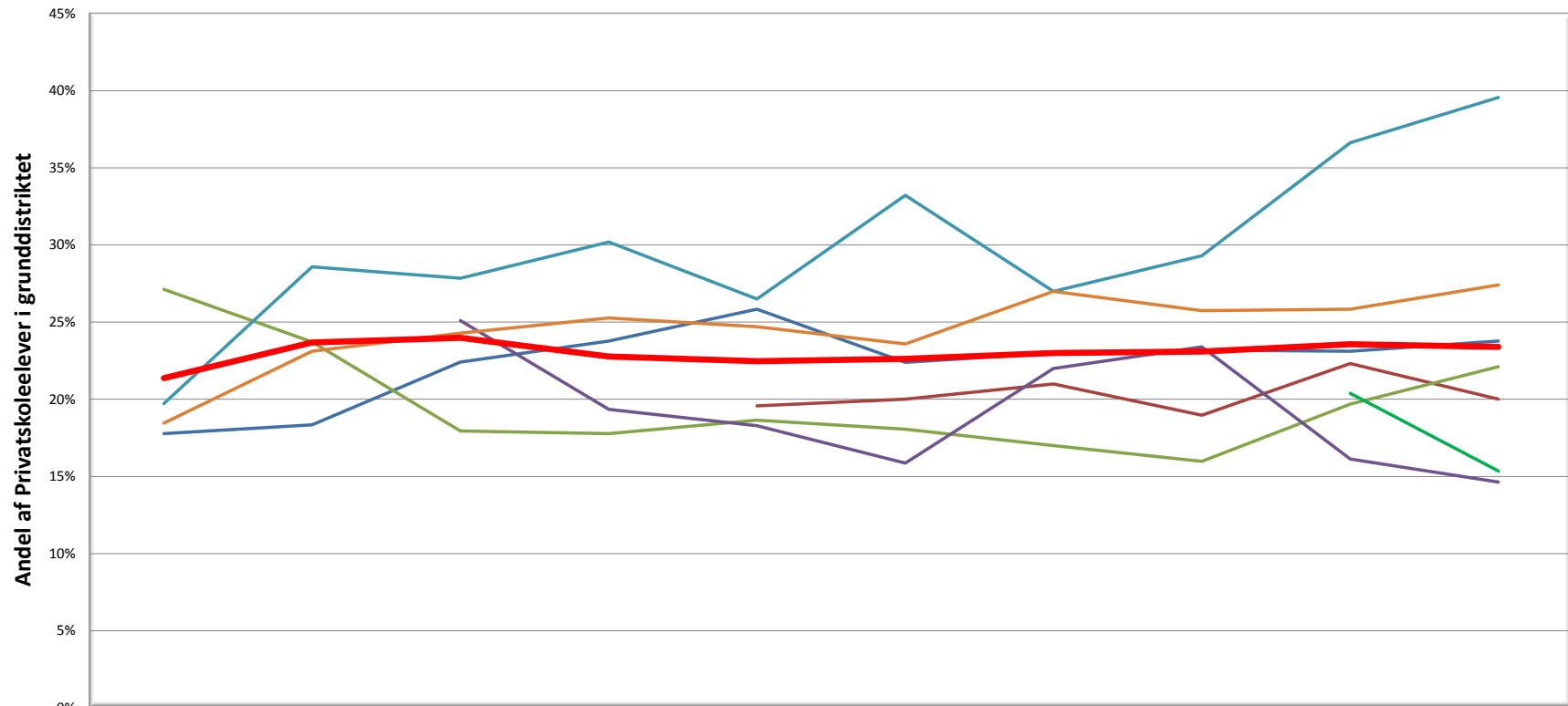
	2004/05	2005/06	2006/07	2007/08	2008/09	2009/10	2010/11	2011/12	2012/13	2013/14
— Randersgades Skole	25%	22%	22%	24%	23%	25%	27%	30%	32%	31%
— Vibenshus Skole	27%	27%	24%	18%	20%	23%	24%	29%	28%	29%
— Sortedamsskolen	24%	27%	25%	24%	23%	25%	26%	29%	31%	32%
— Langelinieskolen	25%	18%	21%	19%	20%	25%	25%	28%	26%	26%
— Heibergskolen	25%	23%	20%	19%	15%	11%	13%	14%	8%	8%
— Strandvejsskolen	30%	29%	26%	30%	34%	32%	36%	35%	34%	30%
— Nørre Fælled Skole1)	31%	34%	34%	33%	34%	37%	41%	38%		
— Kildevældsskolen	25%	29%	29%	27%	28%	30%	33%	30%	29%	29%
— Skolen på Standboulevarden										29%
— Østerbro	27%	27%	26%	26%	26%	28%	30%	31%	30%	28%

Nørrebro



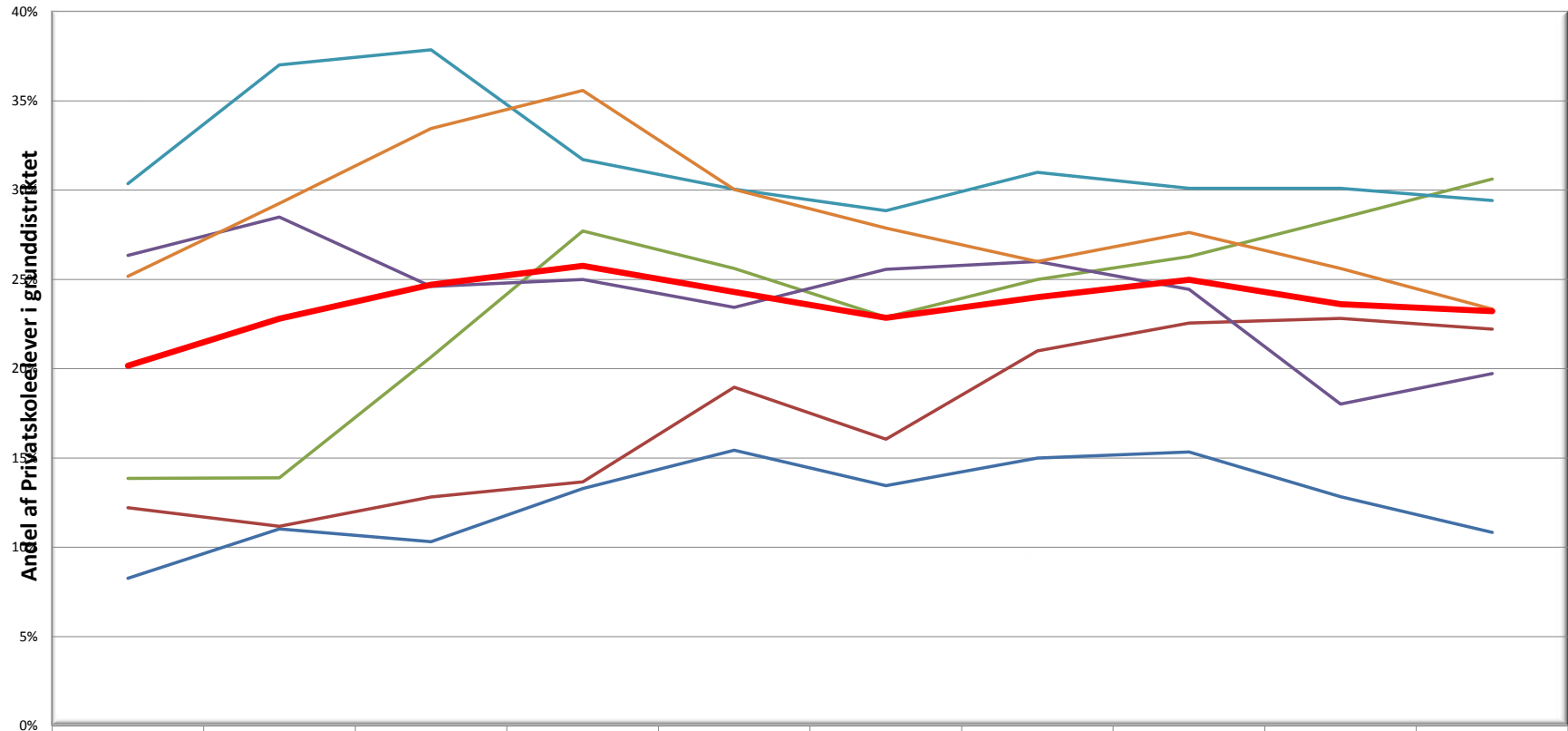
	2004/05	2005/06	2006/07	2007/08	2008/09	2009/10	2010/11	2011/12	2012/13	2013/14
Blågård Skole2)					38%	42%	48%	45%	47%	47%
Guldberg Skole3)		45%	42%	37%	40%	41%	38%	31%	27%	23%
Nørrebro Park Skole3)					33%	29%	31%	30%	31%	31%
Nørre Fælled Skole1)									39%	37%
Hillerødsgades Skole	34%	40%	37%	37%	38%	40%	44%	44%		
Rådmandsgades Skole	37%	38%	35%	34%	32%	34%	30%	35%	31%	38%
Nørrebro	42%	41%	38%	36%	36%	38%	38%	36%	35%	36%

Vesterbro/ Kgs. Enghave



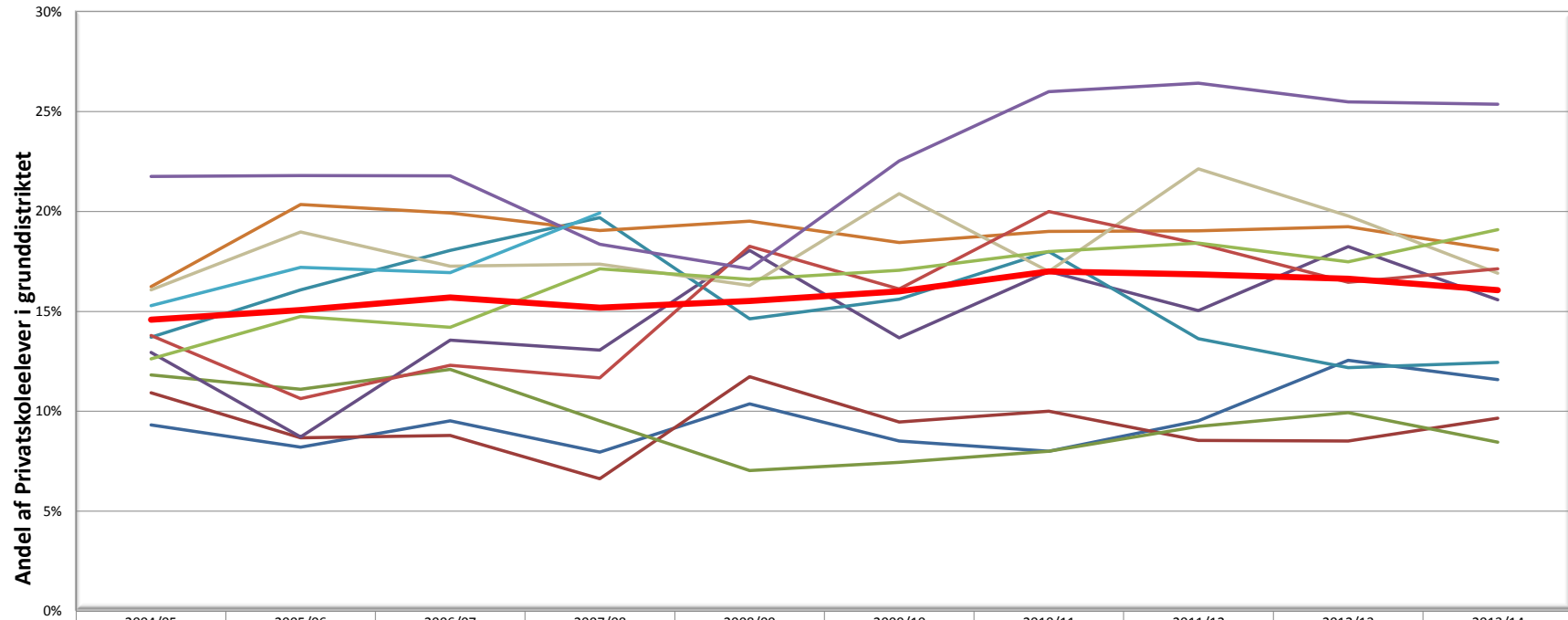
	2004/05	2005/06	2006/07	2007/08	2008/09	2009/10	2010/11	2011/12	2012/13	2013/14
Vesterbro Ny Skole	18%	18%	22%	24%	26%	22%	23%	23%	23%	24%
Tove Ditlevsens Skole 5)					20%	20%	21%	19%	22%	20%
Oehlenschlägersgades Skole	27%	24%	18%	18%	19%	18%	17%	16%	20%	22%
Gasværksvejens Skole			25%	19%	18%	16%	22%	23%	16%	15%
Bavnehøj Skole	20%	29%	28%	30%	27%	33%	27%	29%	37%	40%
Ellebjerg Skole	18%	23%	24%	25%	25%	24%	27%	26%	26%	27%
Skolen i Sydhavn									20%	15%
Vesterbro/Kgs. Enghave	21%	24%	24%	23%	22%	23%	23%	23%	24%	23%

Valby



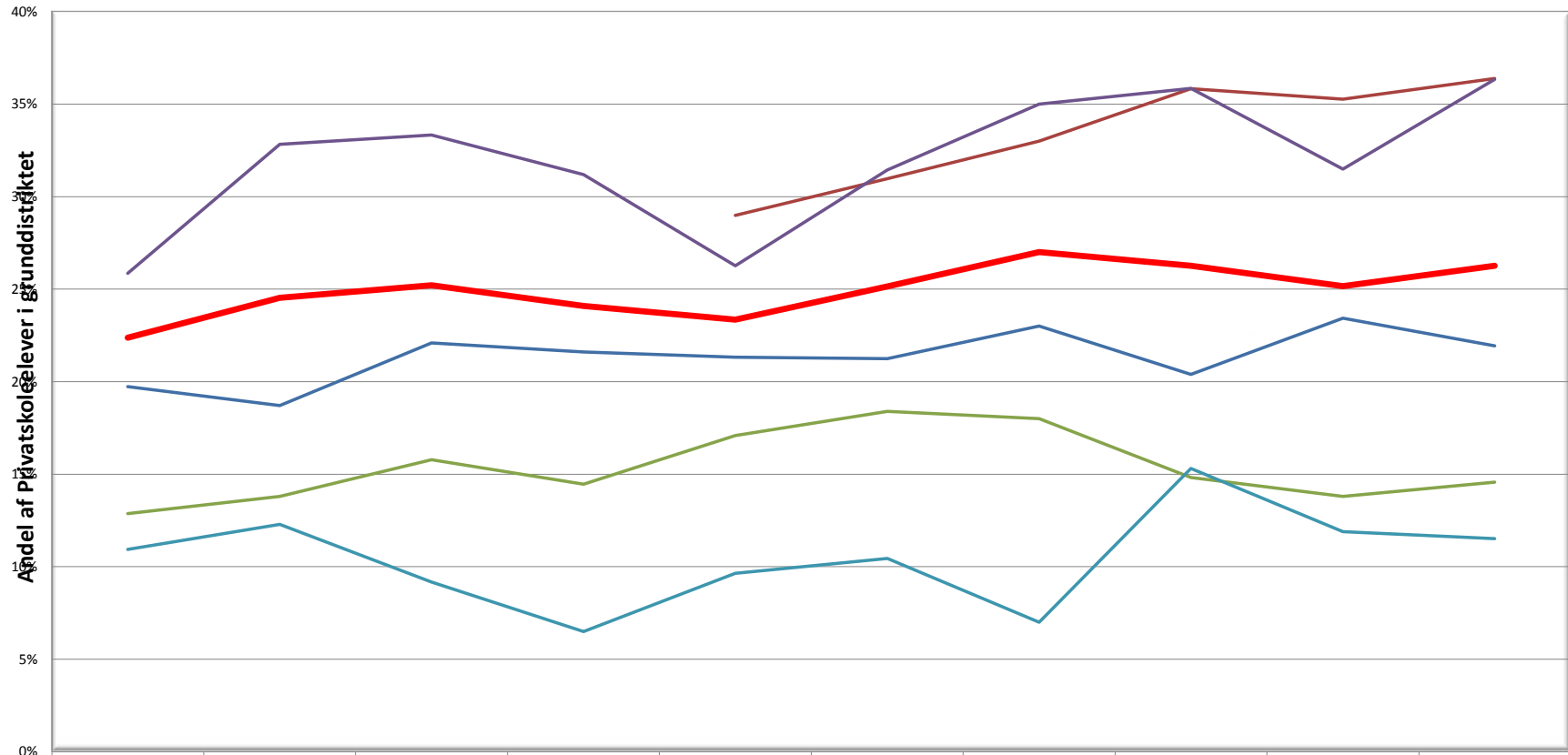
	2004/05	2005/06	2006/07	2007/08	2008/09	2009/10	2010/11	2011/12	2012/13	2013/14
Hanssted Skole	8%	11%	10%	13%	15%	13%	15%	15%	13%	11%
Kirsebærhavens Skole	12%	11%	13%	14%	19%	16%	21%	23%	23%	22%
Lykkebo Skole	14%	14%	21%	28%	26%	23%	25%	26%	28%	31%
Valby Skole	26%	28%	25%	25%	23%	26%	26%	24%	18%	20%
Vigerslev Allé Skole	30%	37%	38%	32%	30%	29%	31%	30%	30%	29%
Ålholm Skole	25%	29%	33%	36%	30%	28%	26%	28%	26%	23%
Valby	20%	23%	25%	26%	24%	23%	24%	25%	24%	23%

Vanløse/Brønshøj-Husum



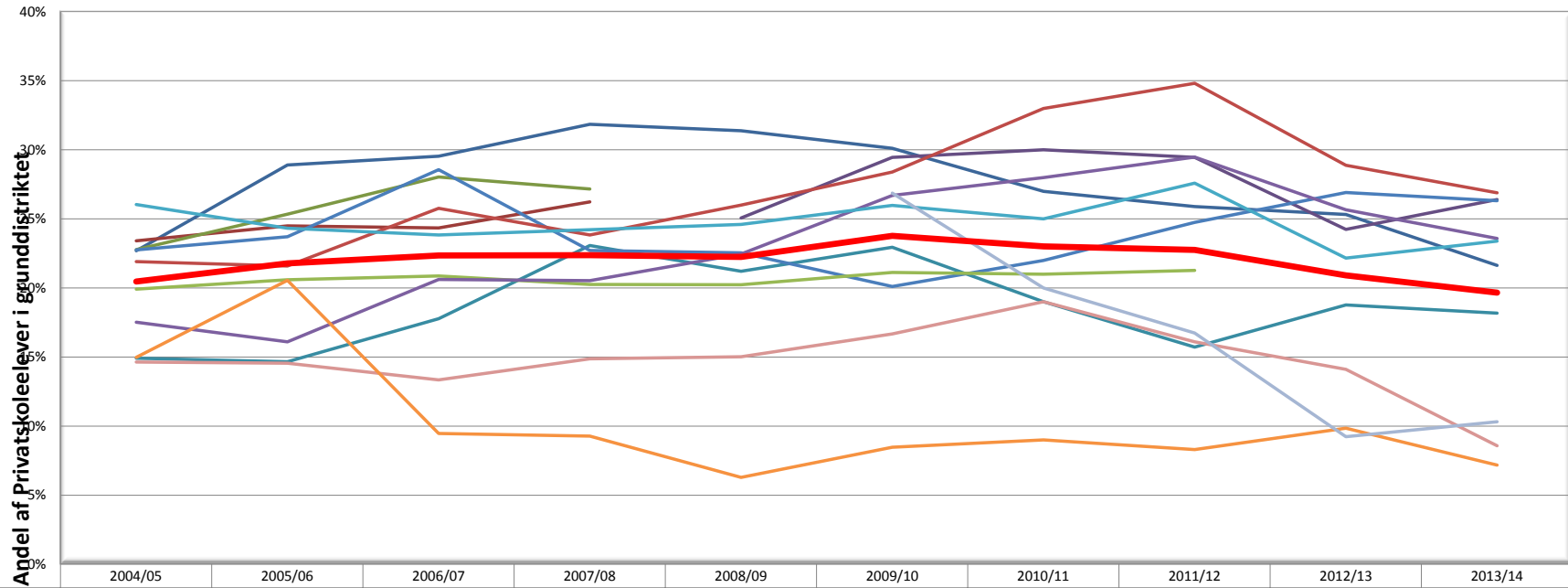
	2004/05	2005/06	2006/07	2007/08	2008/09	2009/10	2010/11	2011/12	2012/13	2013/14
Hyltebjerg Skole	9%	8%	10%	8%	10%	9%	8%	10%	13%	12%
Katrinedal Skole	11%	9%	9%	7%	12%	9%	10%	9%	9%	10%
Kirkebjerg Skole	12%	11%	12%	10%	7%	7%	8%	9%	10%	8%
Rødkilde Skole	13%	9%	14%	13%	18%	14%	17%	15%	18%	16%
Vanløse Skole	14%	16%	18%	20%	15%	16%	18%	14%	12%	12%
Bellahøj Skole	16%	20%	20%	19%	20%	18%	19%	19%	19%	18%
Brønshøj Skole	16%	19%	17%	17%	16%	21%	17%	22%	20%	17%
Husum Skole	14%	11%	12%	12%	18%	16%	20%	18%	16%	17%
Korsager Skole	13%	15%	14%	17%	17%	17%	18%	18%	17%	19%
Tingbjerg Skole	22%	22%	22%	18%	17%	23%	26%	26%	25%	25%
Voldparken Skole(6)	15%	17%	17%	20%						
Vanløse - Brønshøj/Husum	15%	15%	16%	15%	16%	16%	17%	17%	17%	16%

Bispebjerg



	2004/05	2005/06	2006/07	2007/08	2008/09	2009/10	2010/11	2011/12	2012/13	2013/14
Grøndalsvænget Skole	20%	19%	22%	22%	21%	21%	23%	20%	23%	22%
Tagensbo Skole					29%	31%	33%	36%	35%	36%
Holbergskolen	13%	14%	16%	14%	17%	18%	18%	15%	14%	15%
Lunde Husskolen	26%	33%	33%	31%	26%	31%	35%	36%	31%	36%
Utterslev Skole	11%	12%	9%	7%	10%	10%	7%	15%	12%	12%
Bispebjerg	22%	25%	25%	24%	23%	25%	27%	26%	25%	26%

Amager



	2004/05	2005/06	2006/07	2007/08	2008/09	2009/10	2010/11	2011/12	2012/13	2013/14
— Sønderbro Skole	23%	29%	30%	32%	31%	30%	27%	26%	25%	22%
— Sundpark Skole	23%	24%	24%	26%						
— Østrigsgades Skole	23%	25%	28%	27%						
— Lergravsparkens Skole(8)					25%	29%	30%	29%	24%	26%
— Gerbrandskolen	15%	15%	18%	23%	21%	23%	19%	16%	19%	18%
— Skolen Ved Sundet	15%	15%	13%	15%	15%	17%	19%	16%	14%	9%
— Sundbyøster Skole	23%	24%	29%	23%	23%	20%	22%	25%	27%	26%
— Dyvekeskolen	22%	22%	26%	24%	26%	28%	33%	35%	29%	27%
— Højdevangens Skole	20%	21%	21%	20%	20%	21%	21%	21%		
— Peder Lykke Skole	18%	16%	21%	21%	22%	27%	28%	29%	26%	24%
— Amager Fælled Skole	26%	24%	24%	24%	25%	26%	25%	28%	22%	23%

