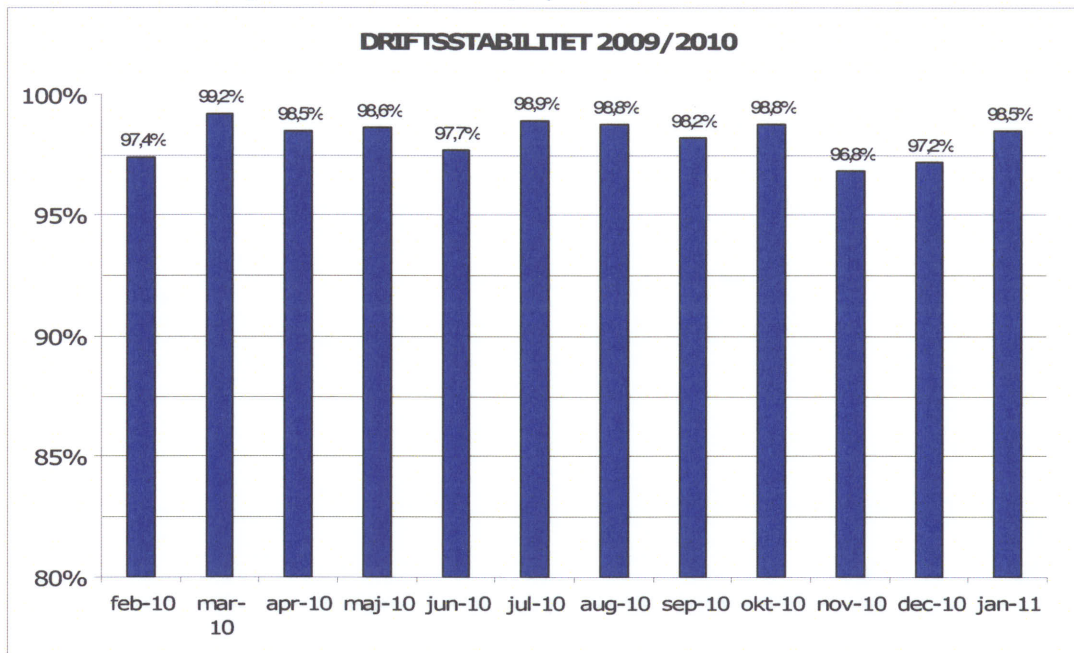


Februar, 2011

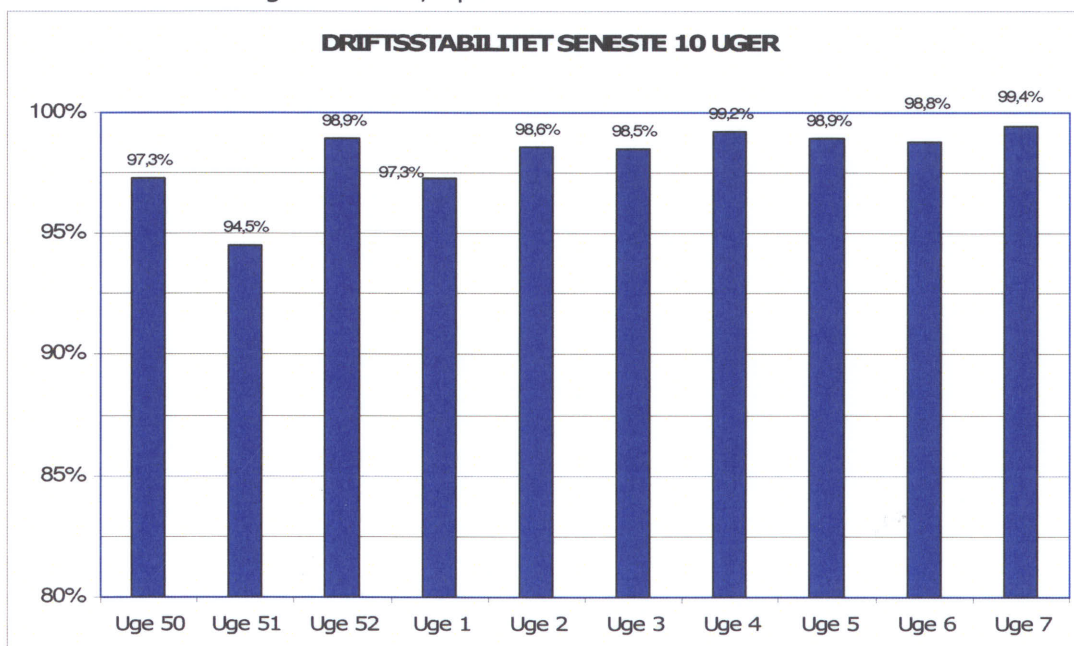
## Metroens driftsstabilitet og passagertal uge 7, 2011

### Driftsstabilitet

Driftsstabiliteten i januar 2011 var 98,5 pct.

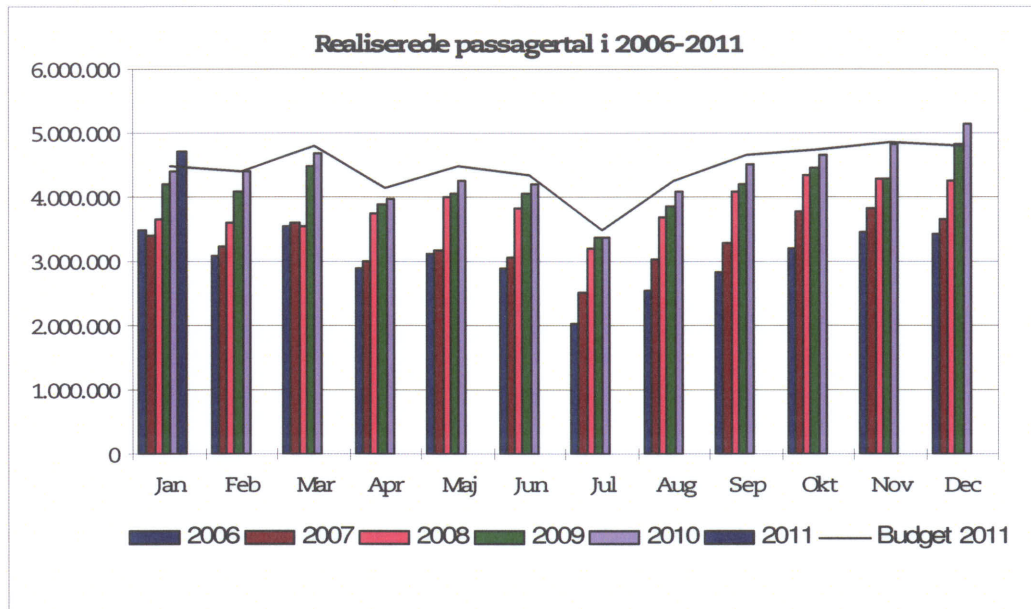


Driftsstabiliteten i uge 7 var 99,4 pct.

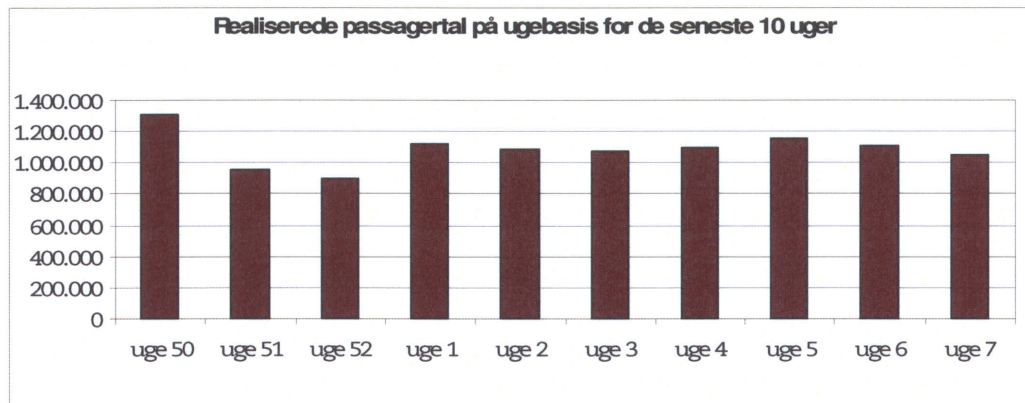


## Passagertal

Passagertallet for januar 2011 var ca. 4,7 mio.



Passagertallet i uge 7 var ca. 1.046.298



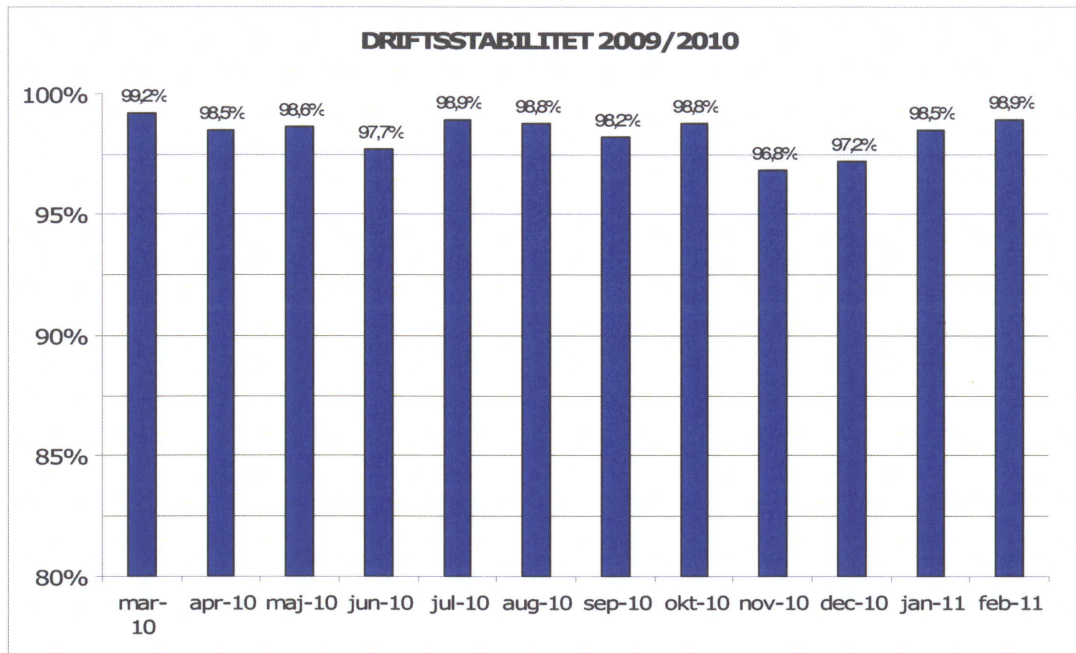
Opgørelser i dette notat bygger på foreløbige tal, hvorfor der tages forbehold for eventuelle senere justeringer.

Marts, 2011

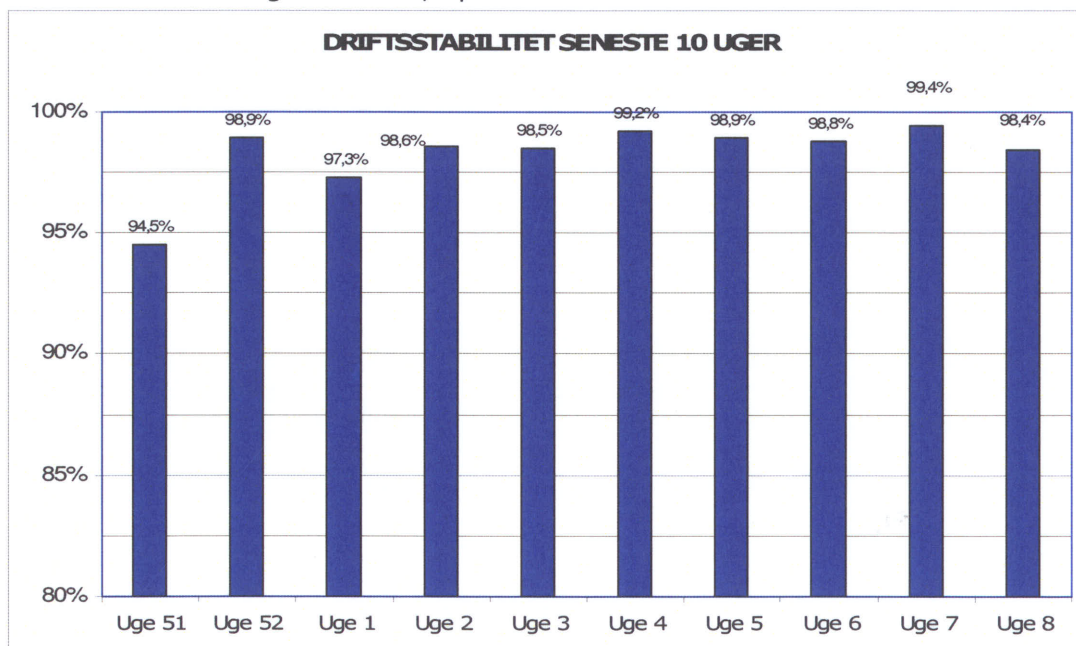
## Metroens driftsstabilitet og passagertal uge 8, 2011

### Driftsstabilitet

Driftsstabiliteten i februar 2011 var 98,9 pct.



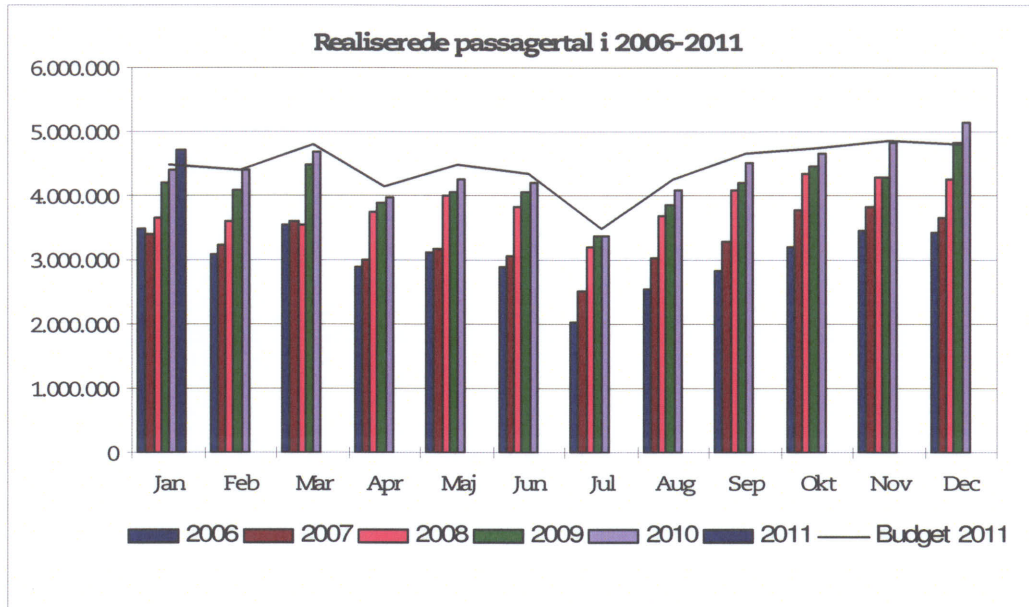
Driftsstabiliteten i uge 8 var 98,4 pct.



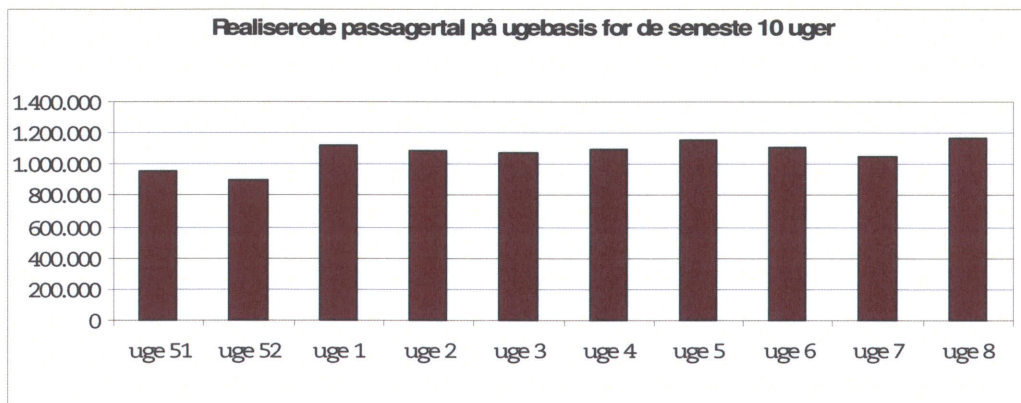


## Passagertal

Passagertallet for januar 2011 var ca. 4,7 mio.



Passagertallet i uge 8 var ca. 1.168.642



Opgørelser i dette notat bygger på foreløbige tal, hvorfor der tages forbehold for eventuelle senere justeringer.