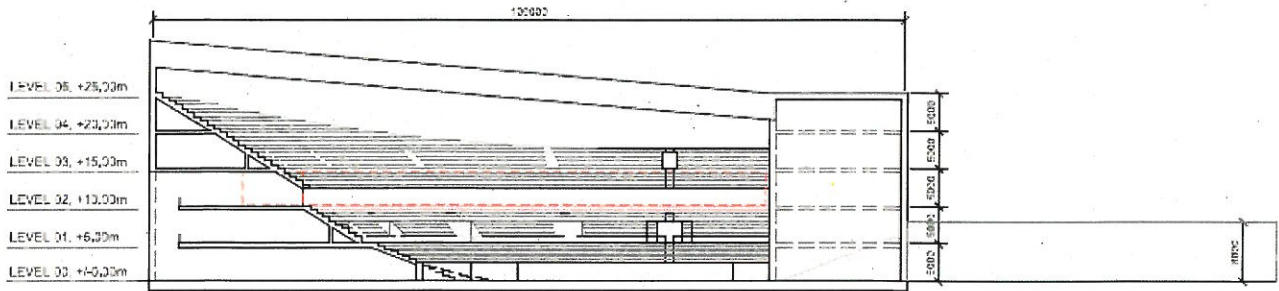


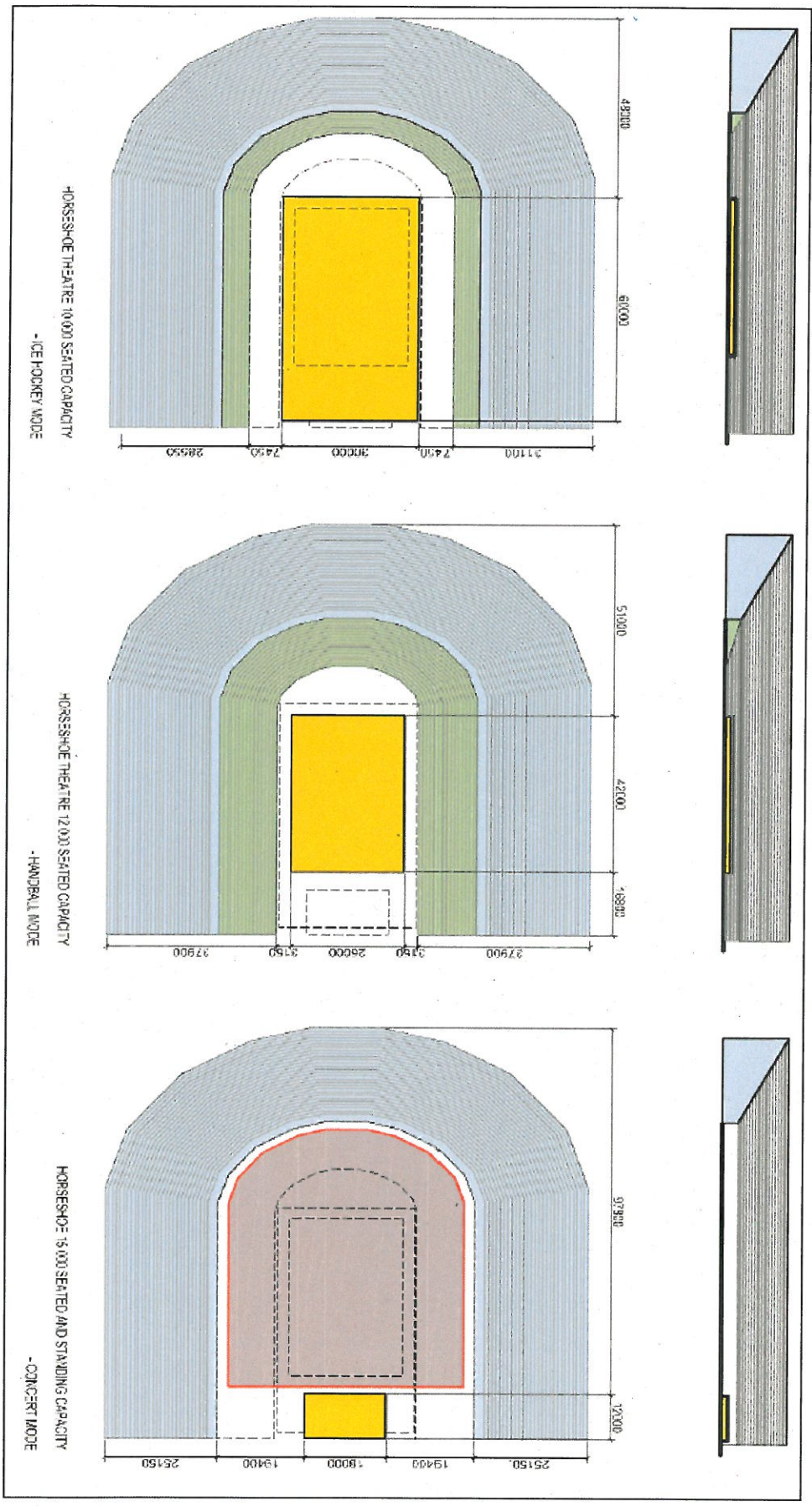
Bilag 3

Example of an arena venue seating cross section



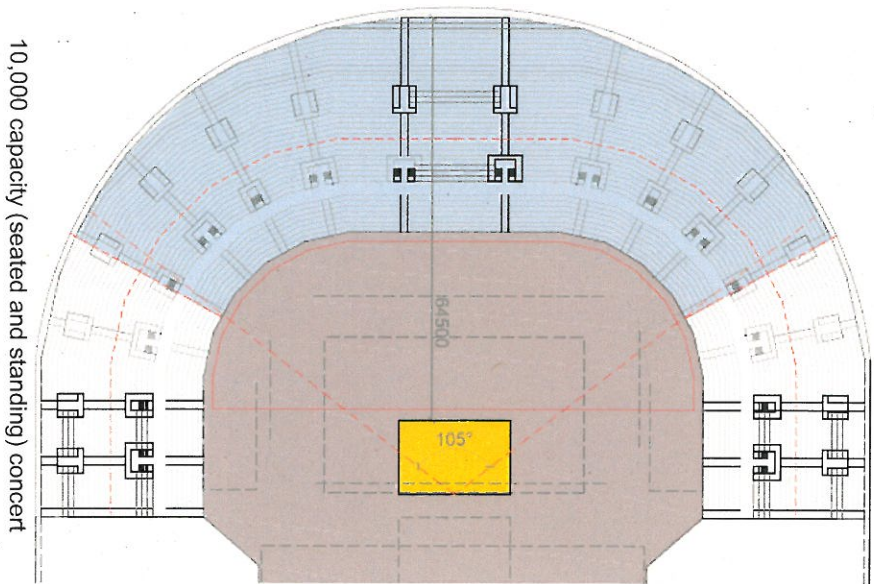
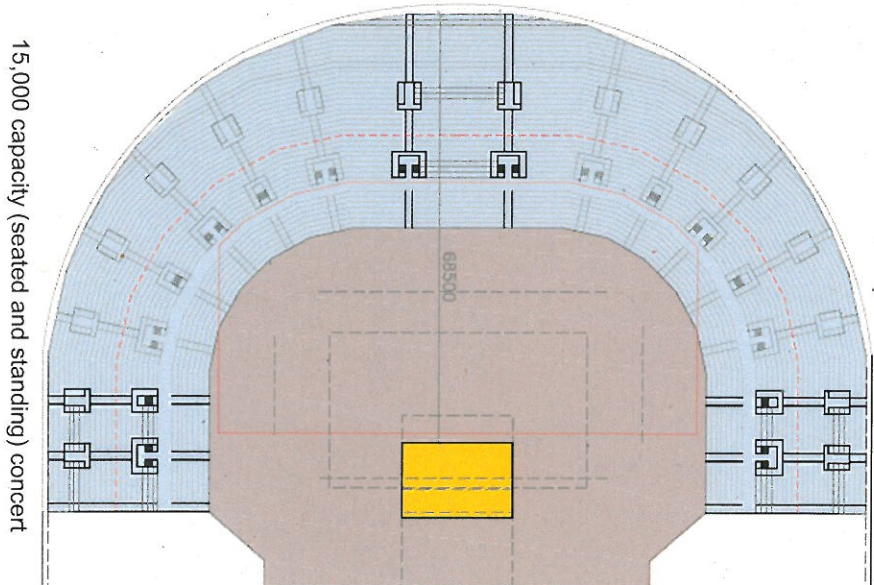
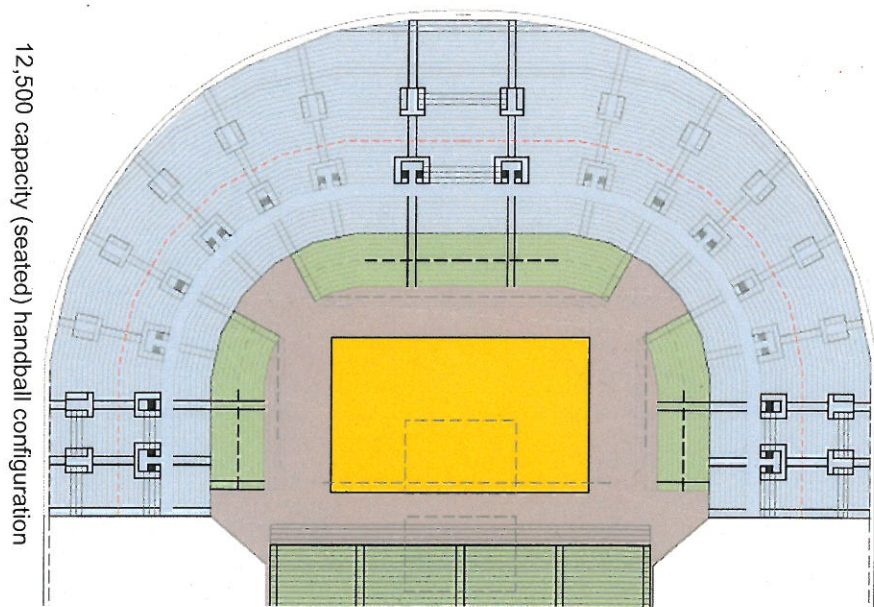
Bilag 3

Der arbejdes både med C-konfiguration og Hestesko-konfiguration. Nedenfor vises eksempler på Hestesko-konfigurationen



Bilag 3

Der arbejdes både med C-konfiguration og Hestesko-konfiguration. Nedenfor vises eksempler på C-konfigurationen



- Fixed seating
- Retractable seating
- Flat floor
- Stage/handball court/Olympic ice pad