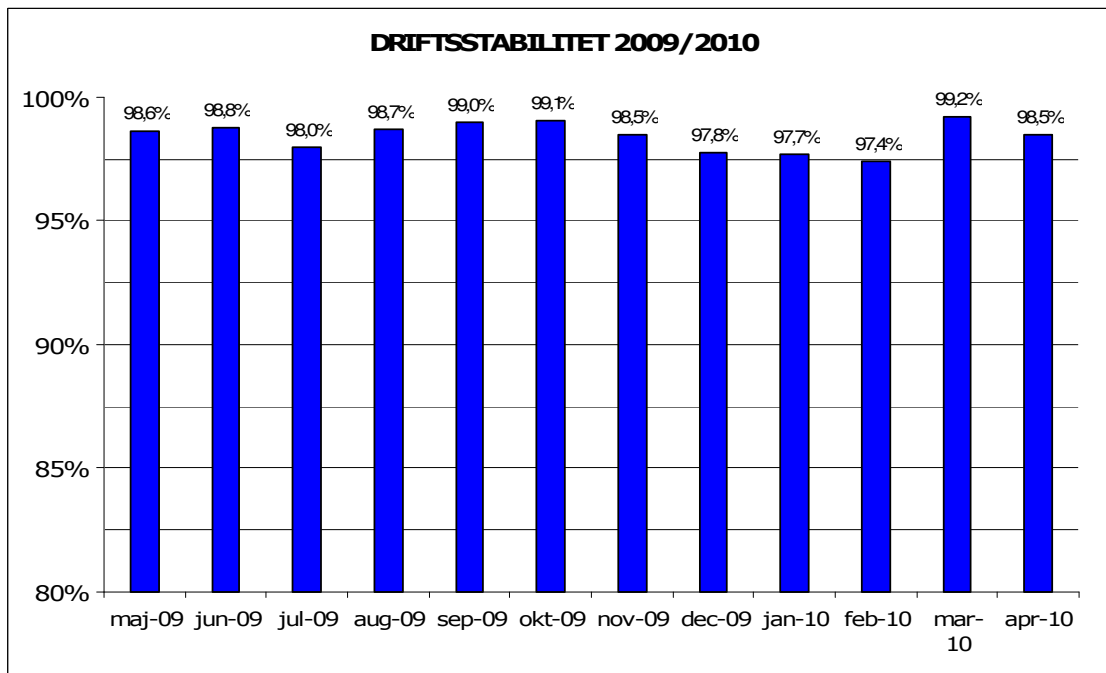


Maj, 2010

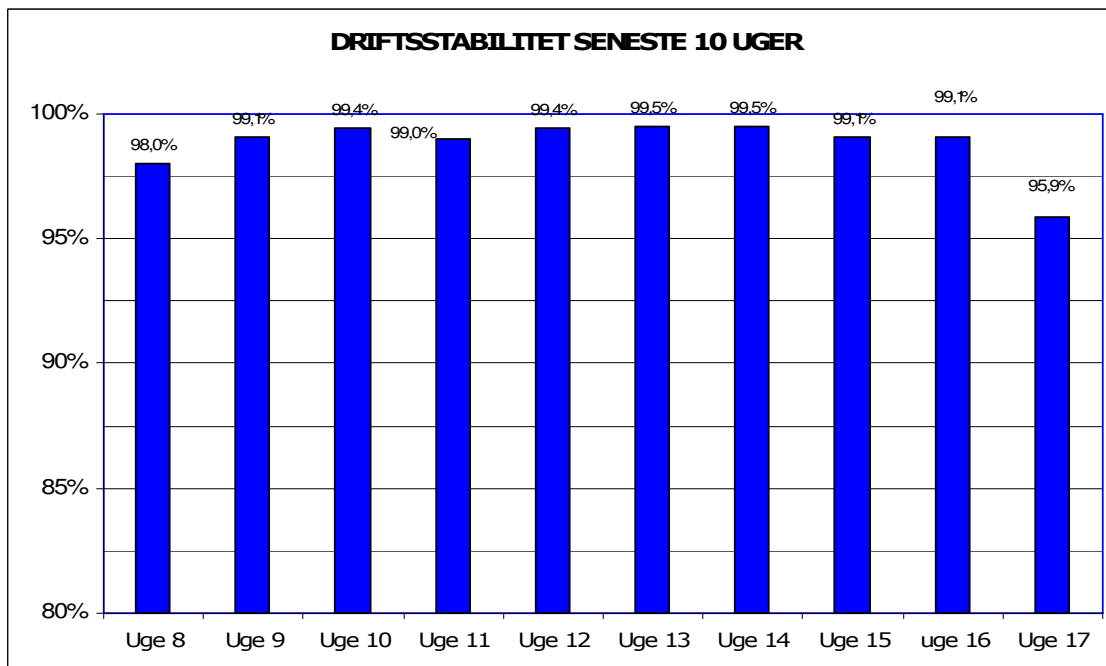
Metroens driftsstabilitet og passagertal uge 17, 2010

Driftsstabilitet

Driftsstabiliteten i april var 98,5 pct.

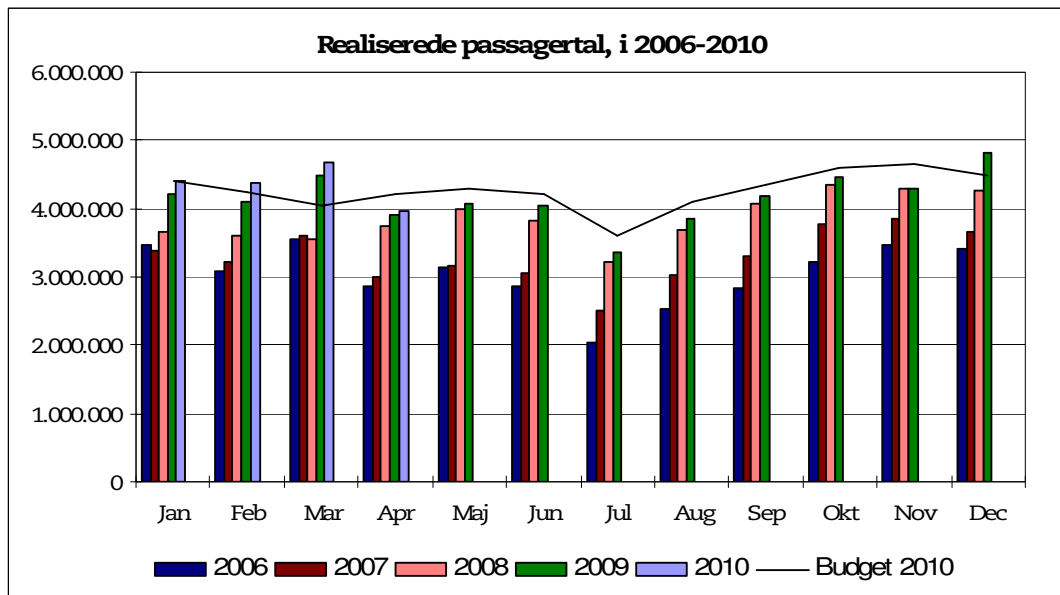


Driftsstabiliteten i uge 17 var pct. 95,9

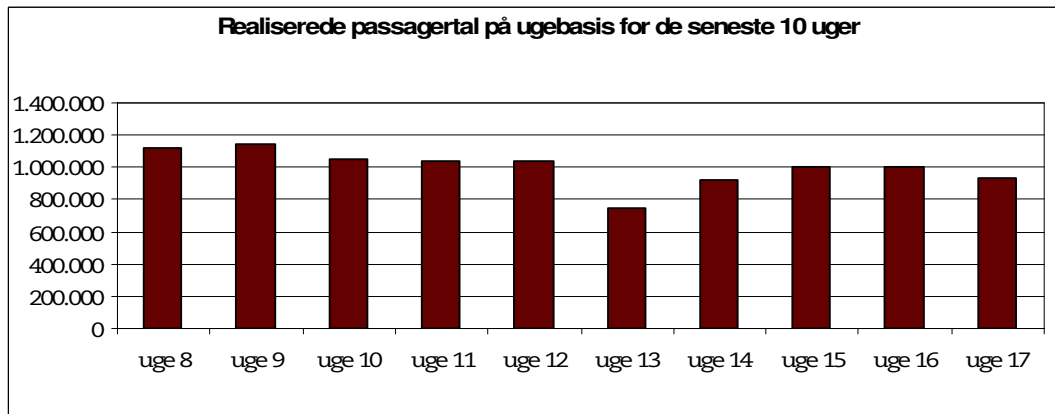


Passagertal

Passagertallet for april 2010 var ca. 4 mio.



Passagertallet i uge 17 var 931.319



Opgørelser i dette notat bygger på foreløbige tal, hvorfor der tages forbehold for eventuelle senere justeringer.