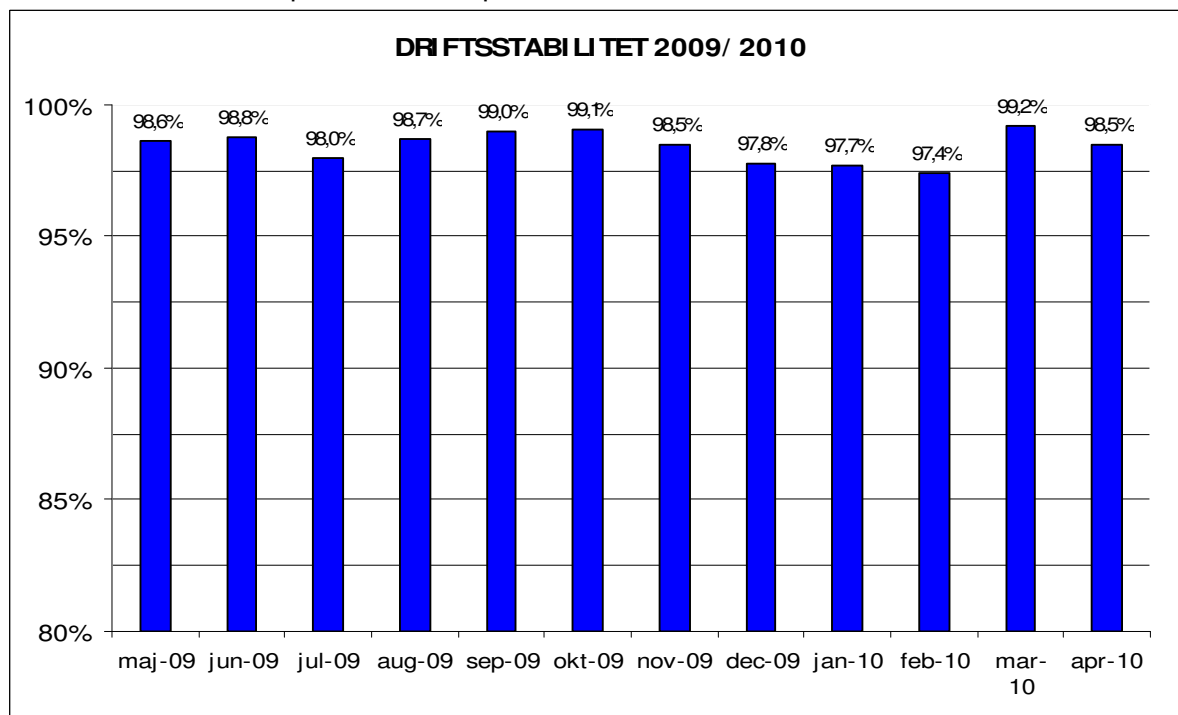


Maj, 2010

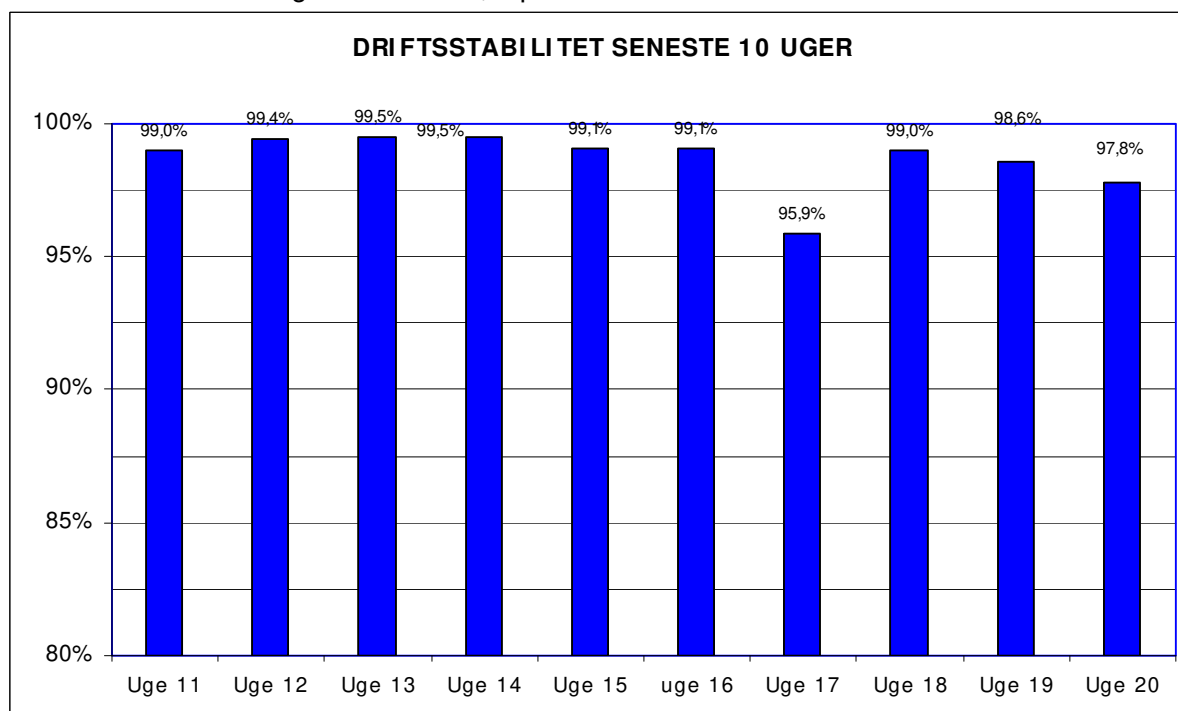
## Metroens driftsstabilitet og passagertal uge 20, 2010

### Driftsstabilitet

Driftsstabiliteten i april var 98,5 pct.

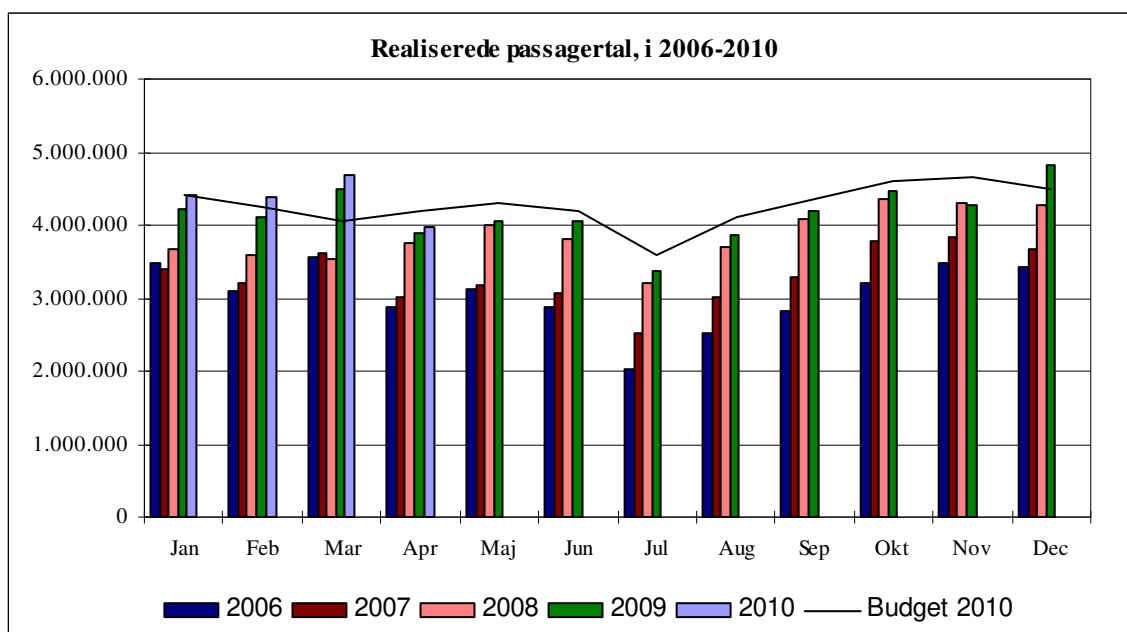


Driftsstabiliteten i uge 20 var 97,8 pct.

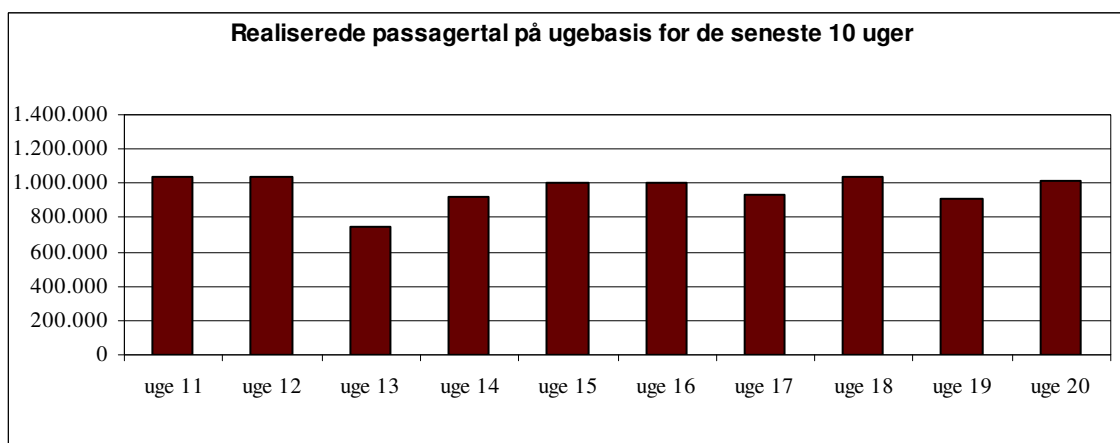


## Passagertal

Passagertallet for april 2010 var ca. 4 mio.



Passagertallet i uge 20 var ca. 1.013.501



Opgørelser i dette notat bygger på foreløbige tal, hvorfor der tages forbehold for eventuelle senere justeringer.