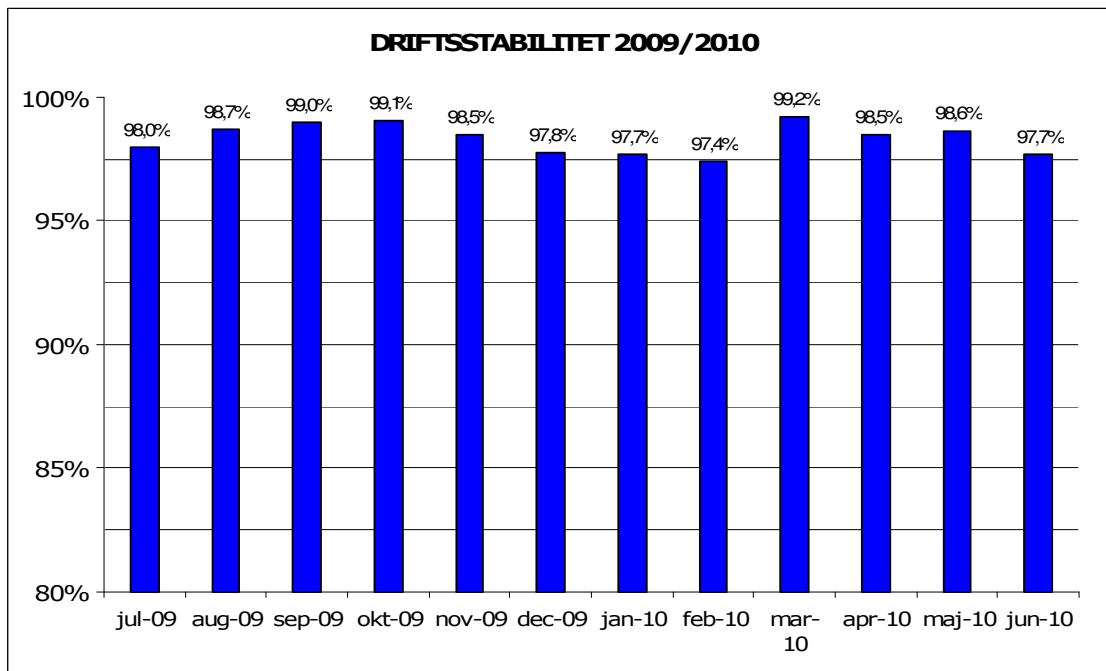


Juli, 2010

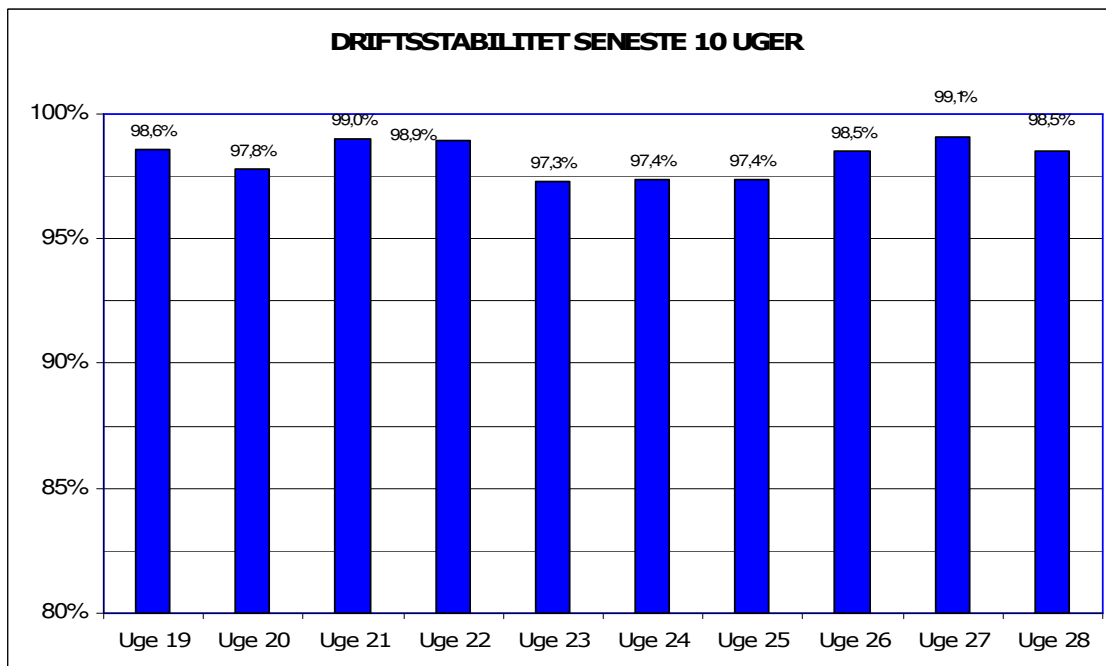
Metroens driftsstabilitet og passagertal uge 28, 2010

Driftsstabilitet

Driftsstabiliteten i juni var 97,7 pct.

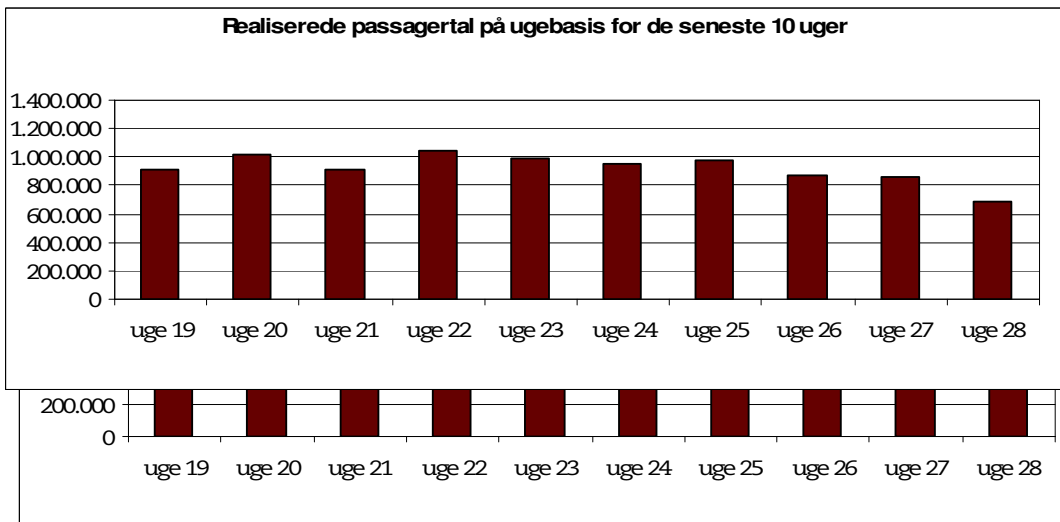
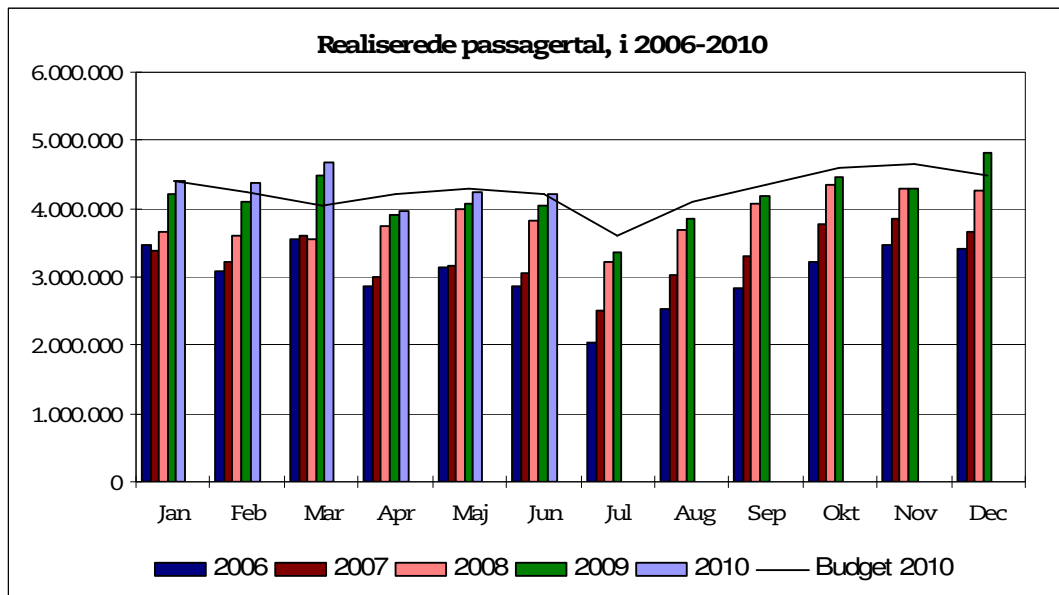


Driftsstabiliteten i uge 28 var 98,5 pct.



Passagertal

Passagertallet for juni 2010 var ca. 4,2 mio.



Opgørelser i dette notat bygger på foreløbige tal, hvorfor der tages forbehold for eventuelle senere justeringer.