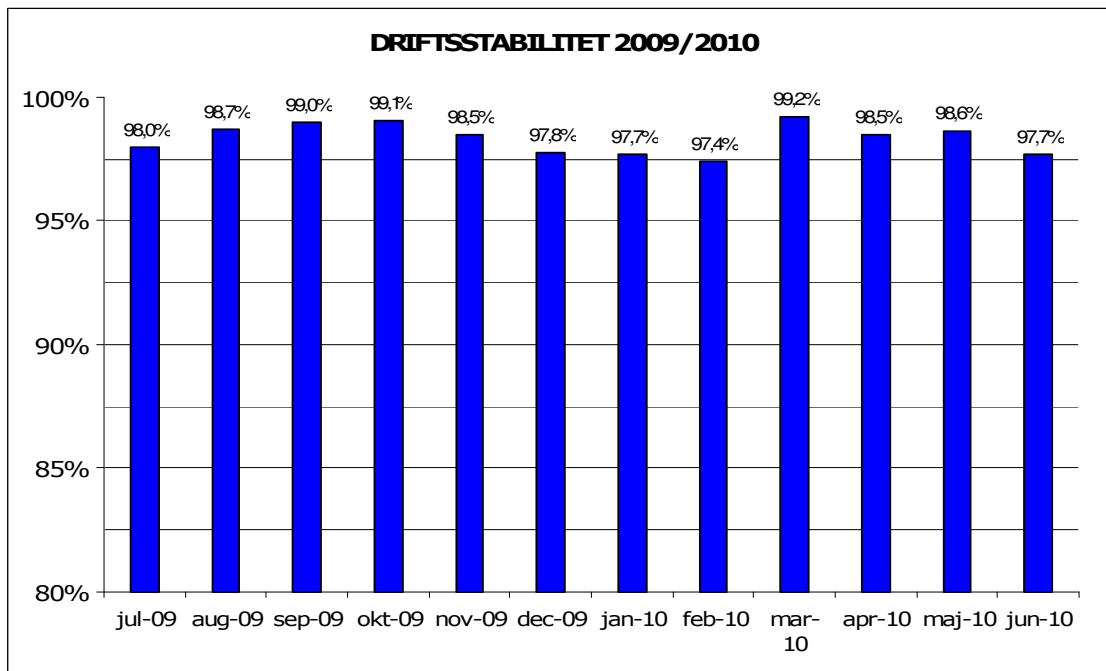


Juli, 2010

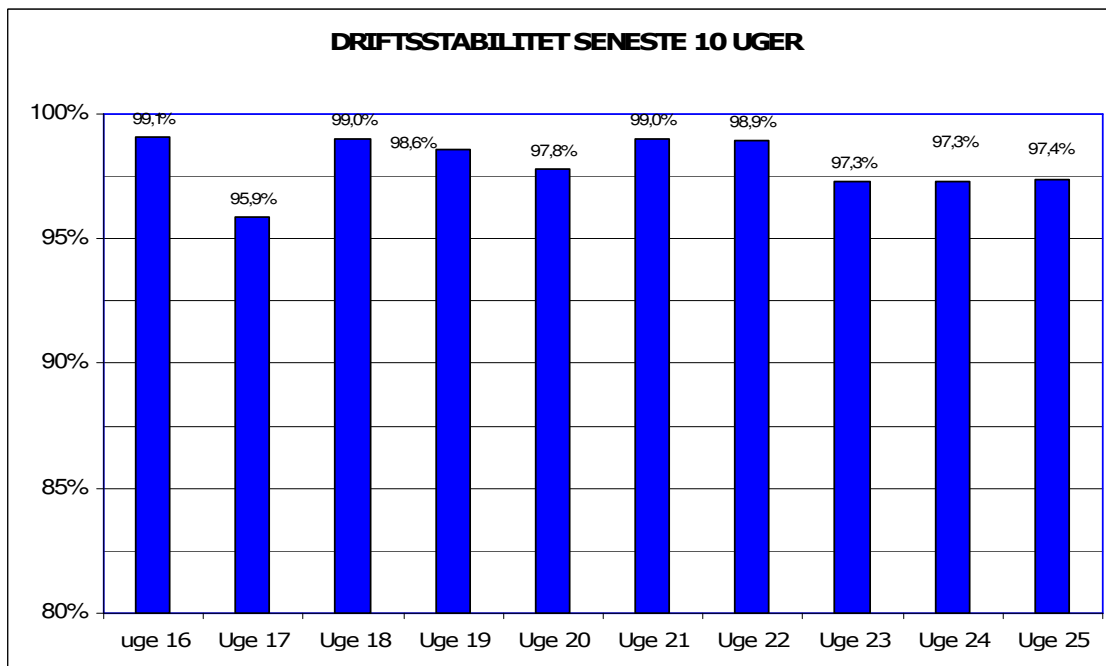
## Metroens driftsstabilitet og passagertal uge 25, 2010

### Driftsstabilitet

Driftsstabiliteten i juni var 97,7 pct.

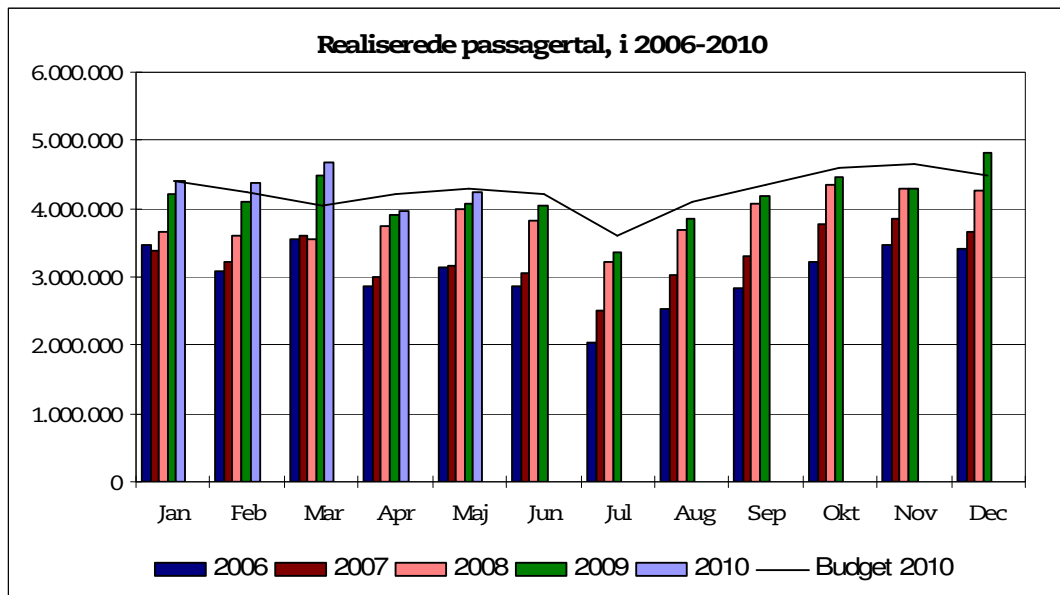


Driftsstabiliteten i uge 25 var 97,4 pct.

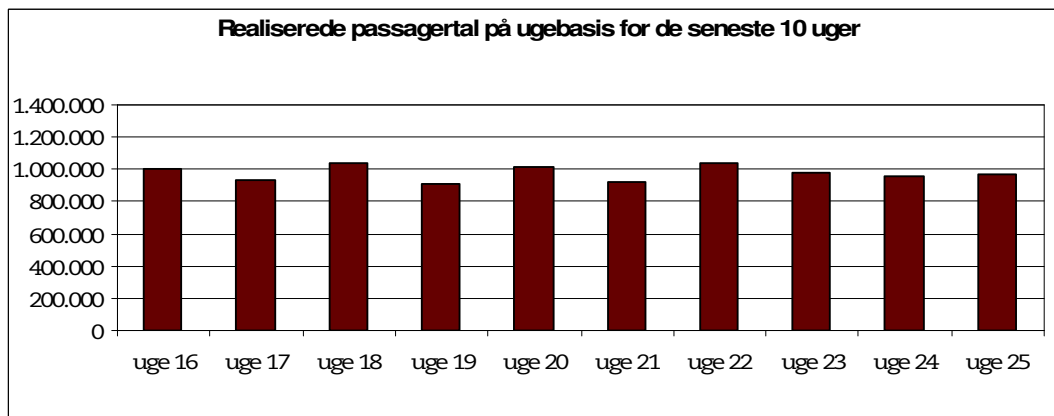


## Passagertal

Passagertallet for maj 2010 var ca. 4,2 mio.



Passagertallet i uge 25 var ca. 973.822



Opgørelser i dette notat bygger på foreløbige tal, hvorfor der tages forbehold for eventuelle senere justeringer.