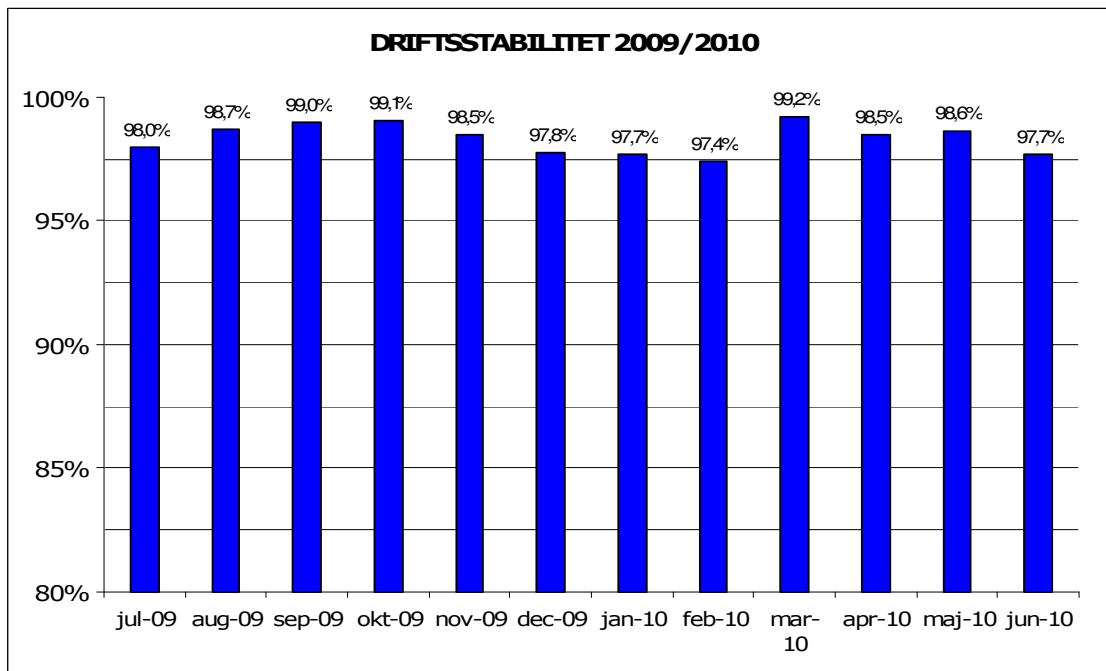


Juli, 2010

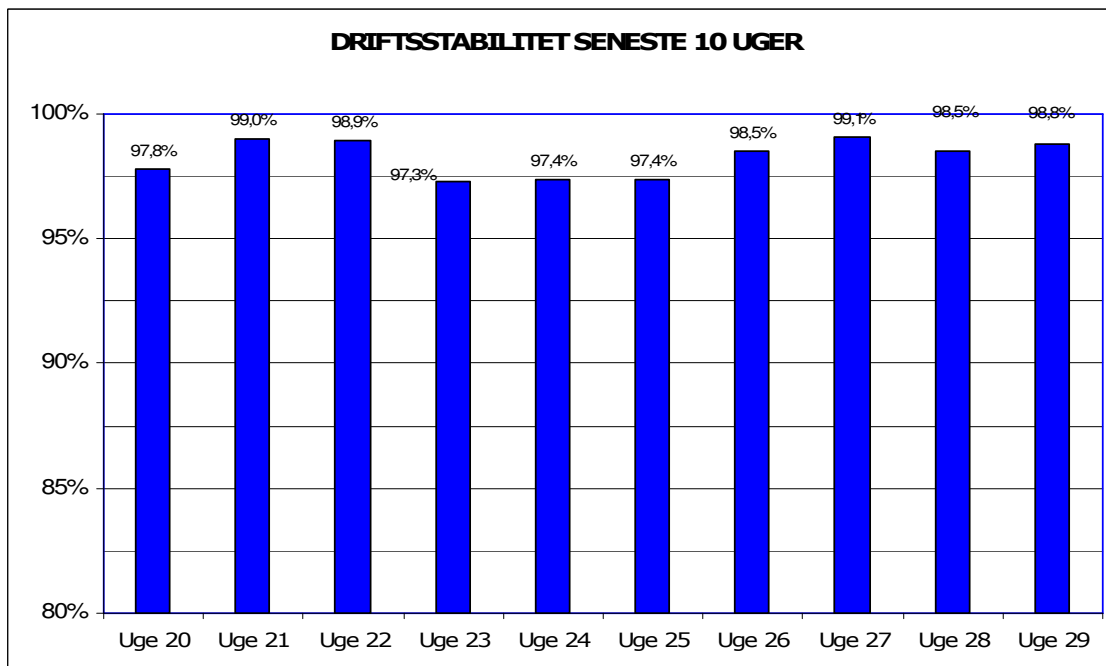
Metroens driftsstabilitet og passagertal uge 29, 2010

Driftsstabilitet

Driftsstabiliteten i juni var 97,7 pct.

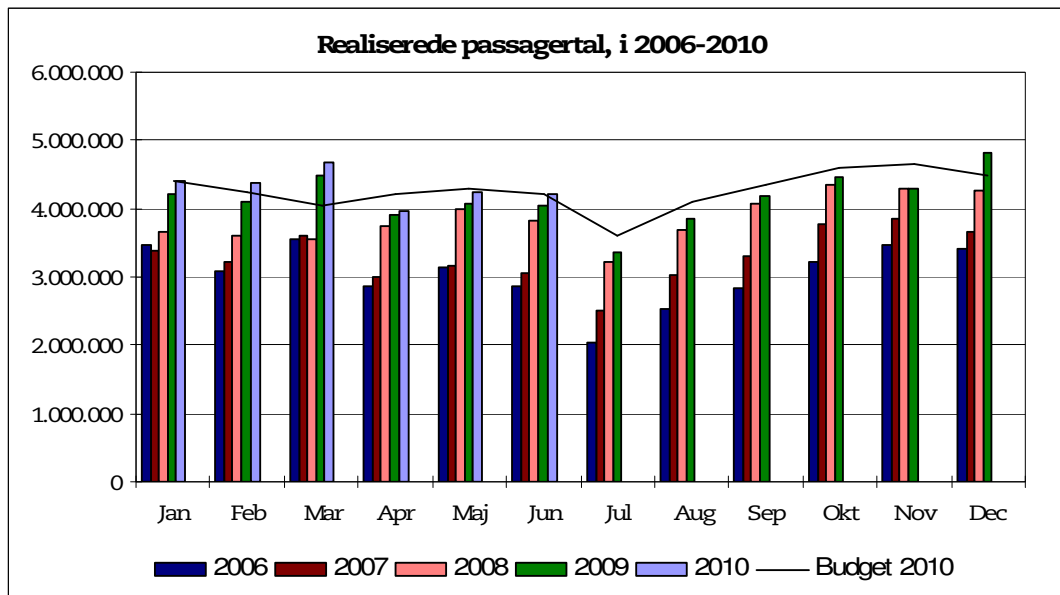


Driftsstabiliteten i uge 29 var 98,8 pct.

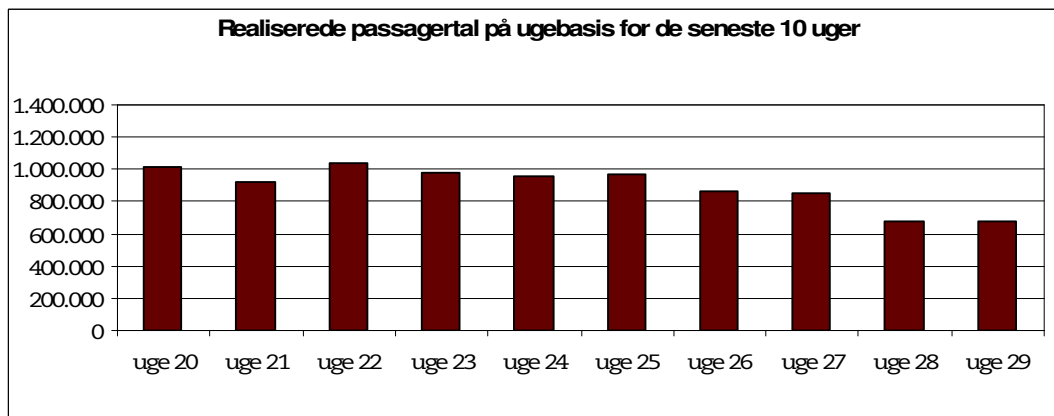


Passagertal

Passagertallet for juni 2010 var ca. 4,2 mio.



Passagertallet i uge 29 var ca. 676.590



Opgørelser i dette notat bygger på foreløbige tal, hvorfor der tages forbehold for eventuelle senere justeringer.