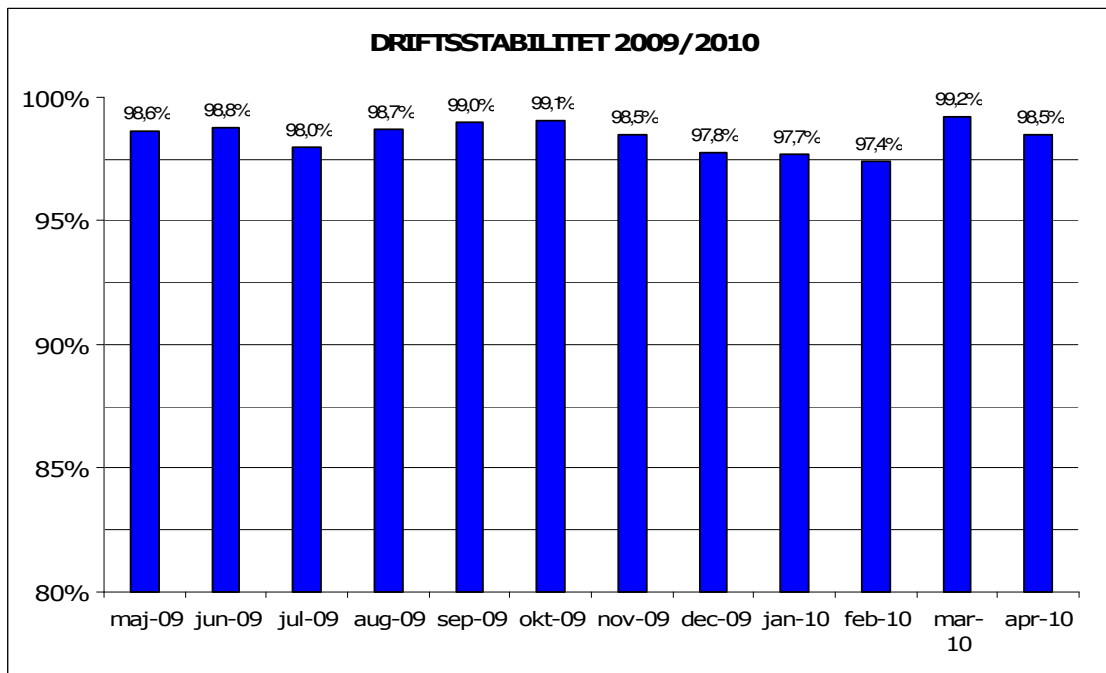


Maj, 2010

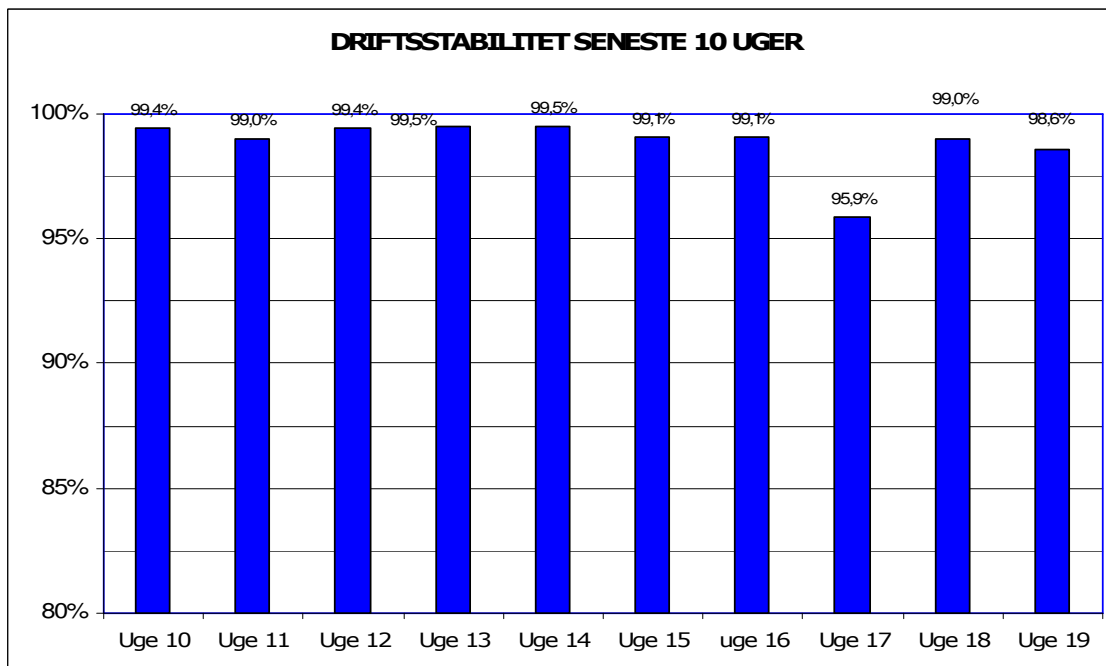
Metroens driftsstabilitet og passagertal uge 19, 2010

Driftsstabilitet

Driftsstabiliteten i april var 98,5 pct.

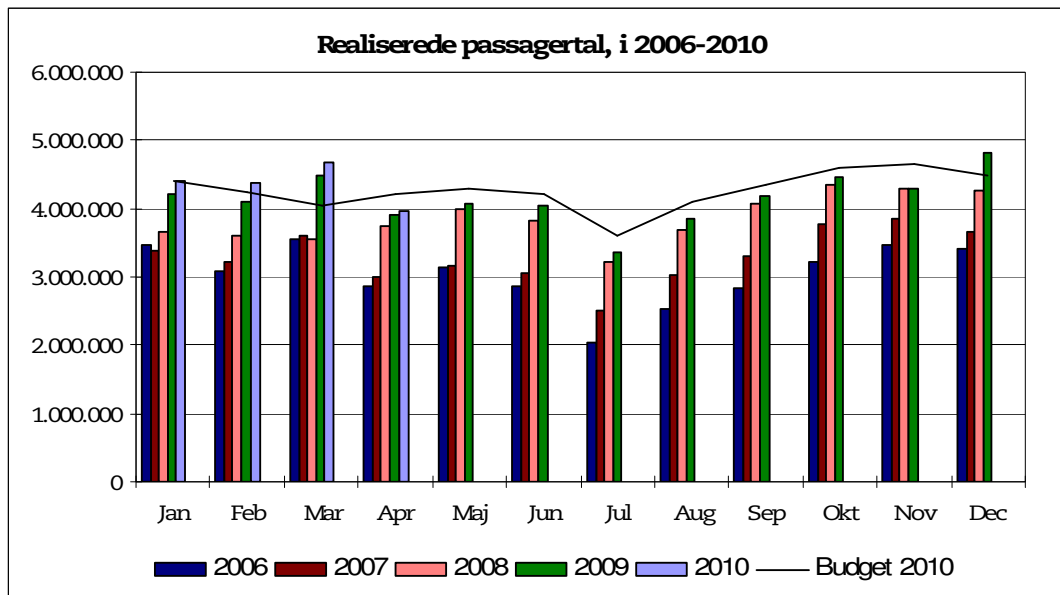


Driftsstabiliteten i uge 19 var 98,6 pct.

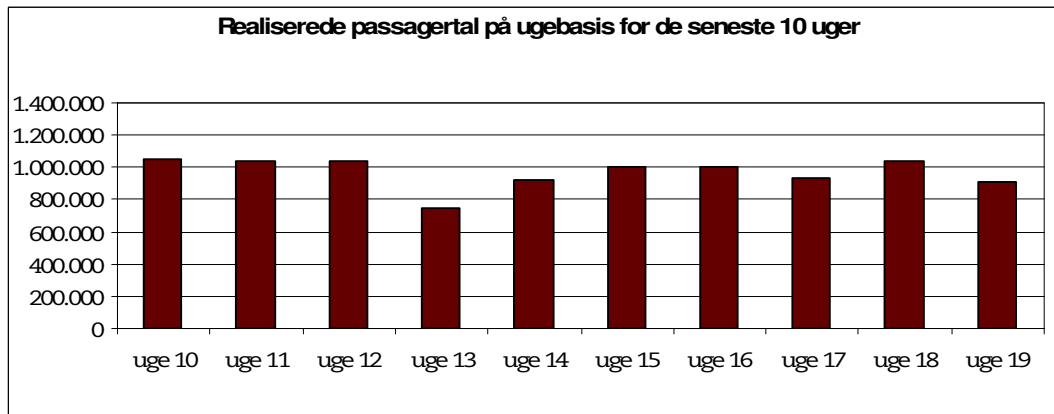


Passagertal

Passagertallet for april 2010 var ca. 4 mio.



Passagertallet i uge 19 var ca. 904.745



Opgørelser i dette notat bygger på foreløbige tal, hvorfor der tages forbehold for eventuelle senere justeringer.