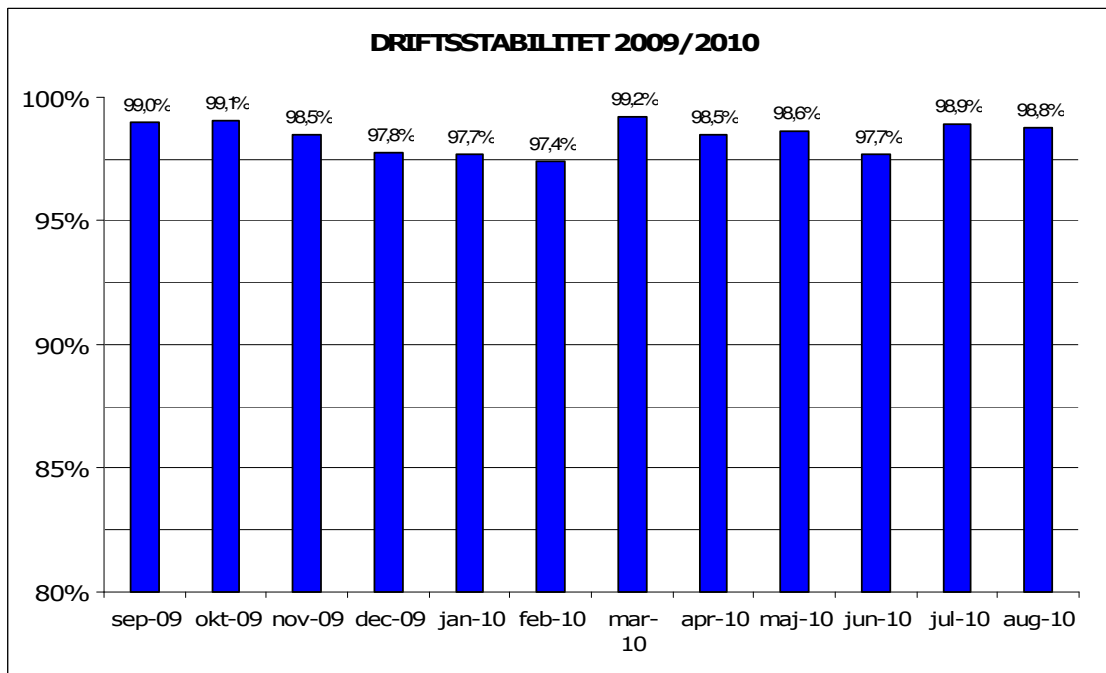


September, 2010

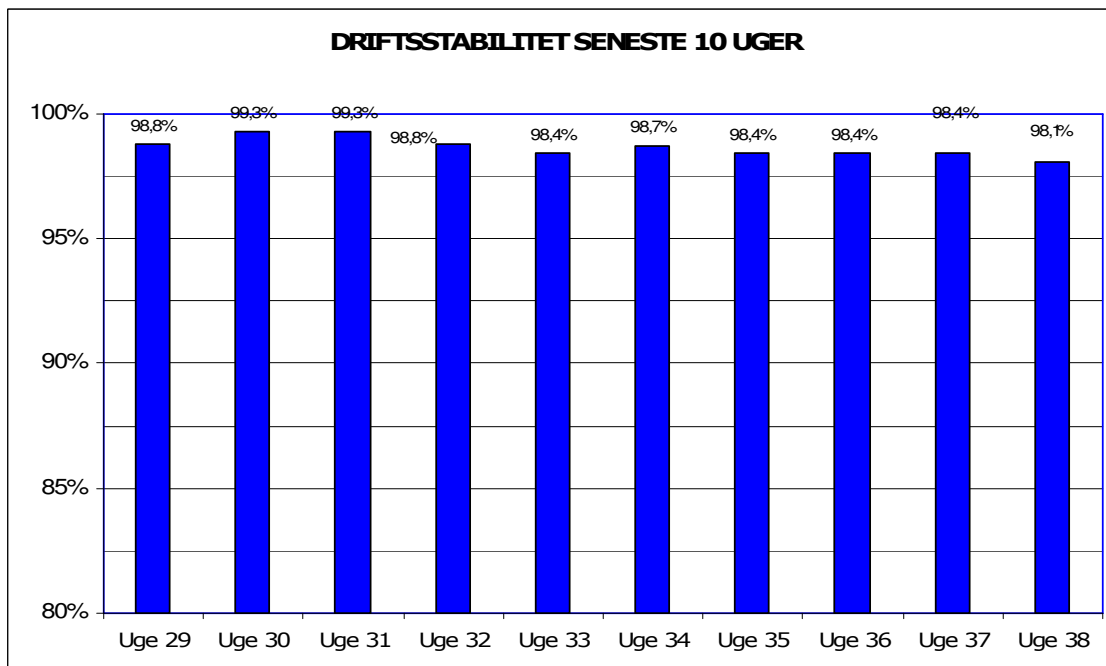
Metroens driftsstabilitet og passagertal uge 38, 2010

Driftsstabilitet

Driftsstabiliteten i august var 98,8 pct.

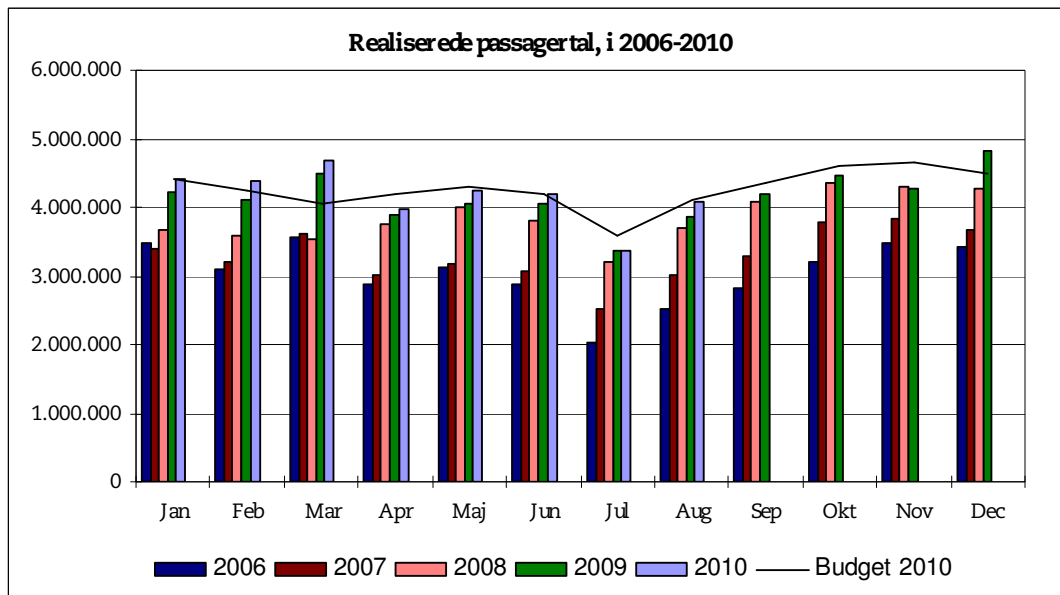


Driftsstabiliteten i uge 38 var 98,1 pct.

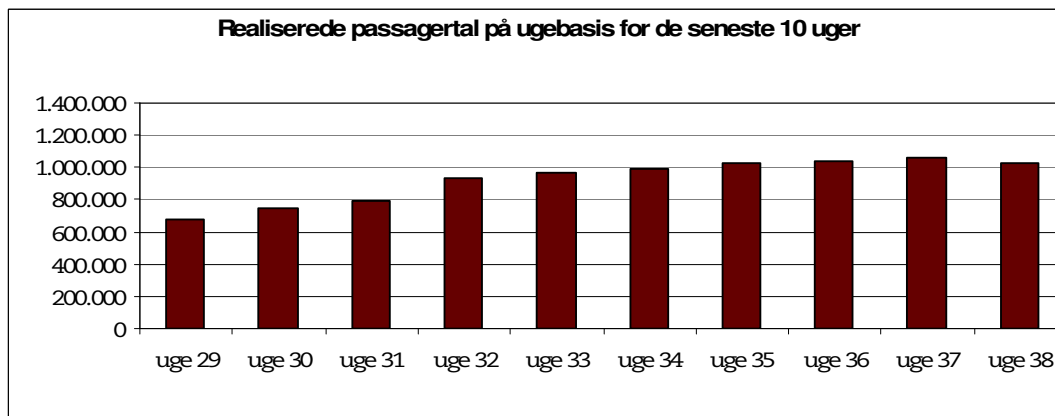


Passagertal

Passagertallet for august 2010 var ca. 4,0 mio.



Passagertallet i uge 38 var ca. 1.030.455



Opgørelser i dette notat bygger på foreløbige tal, hvorfor der tages forbehold for eventuelle senere justeringer.